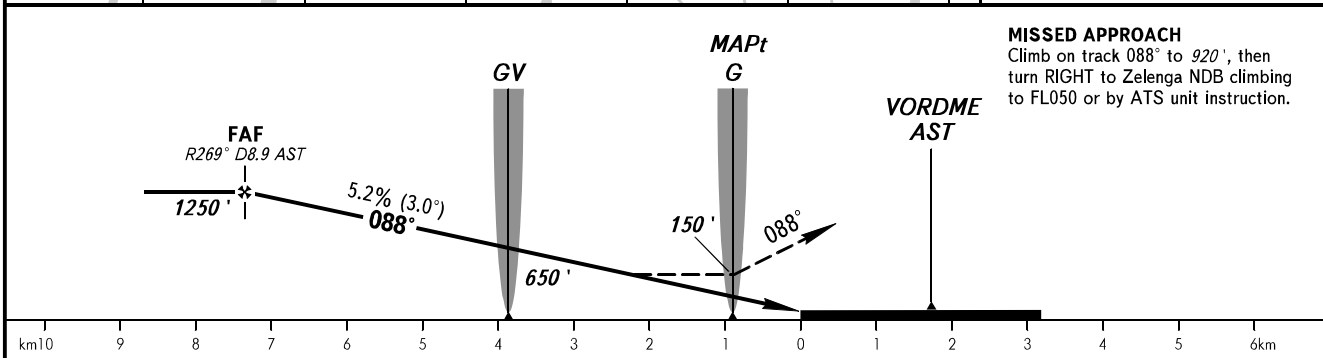
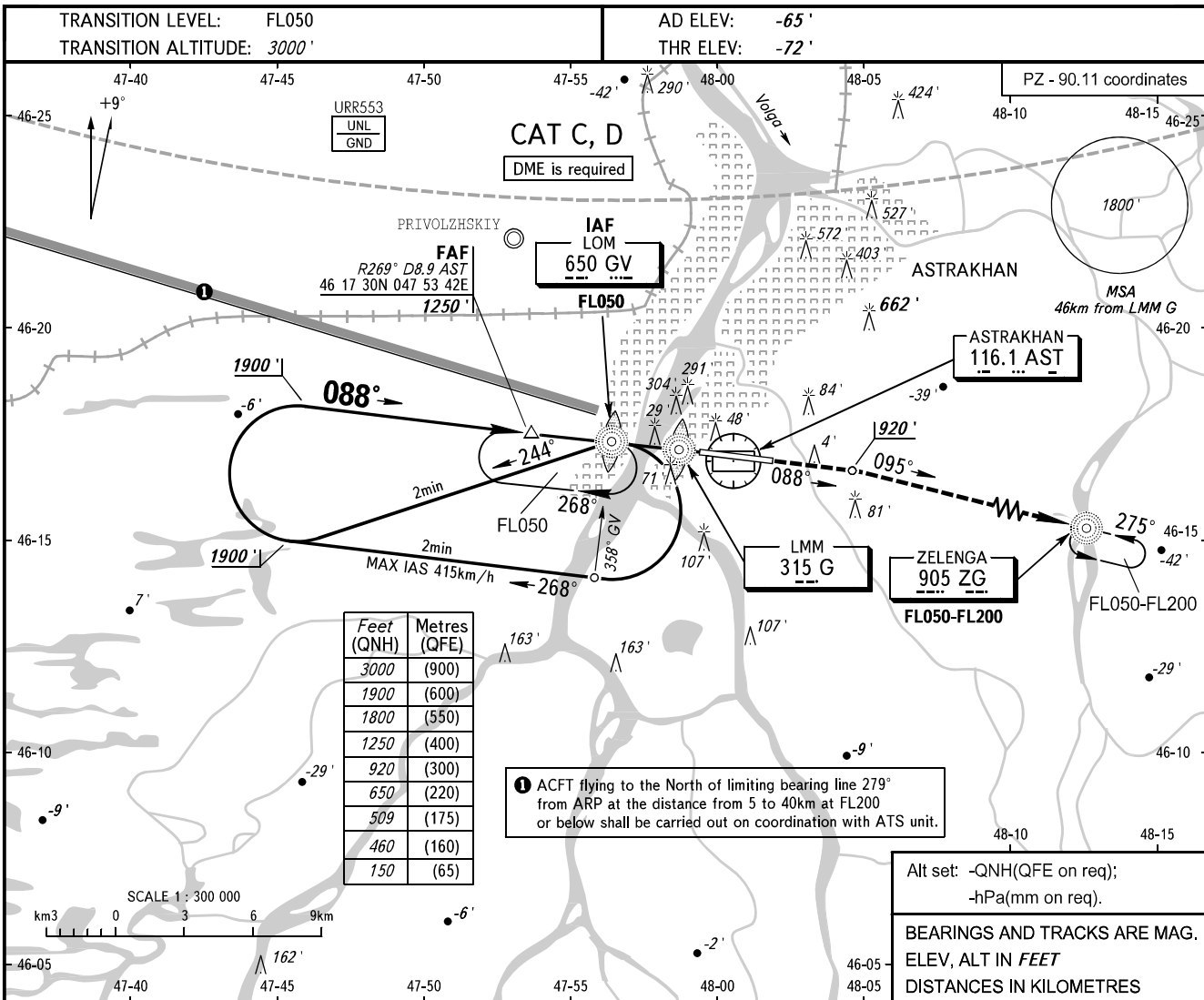


**INSTRUMENT
APPROACH
CHART - ICAO**

RADAR	120.600
TOWER	118.600

ASTRAKHAN, RUSSIA
ASTRAKHAN
NDB Y RWY 09



OCA(H)		A	B	C	D					
Straight-in Approach	NDB (LMM)			460' (525')	460' (525')					
	With FAF WO FAF			509' (575')	509' (575')					
WARNING Heavy turbulence with down-draughts and windshear may be expected on final.										
NOTE: 1. Race track procedure shall be carried out after STAR UP 4A, OMIRA 4A. 2. Reversal procedure shall be carried out after STAR ZG 4A.										
GROUND SPEED	km/h	150	180	210	240	270	300	330	360	390
FAF-MAPt 6444m	min:sec	2:35	2:09	1:50	1:37	1:26	1:17	1:10	1:04	0:59
RATE OF DESCENT	m/s	2.2	2.6	3.0	3.5	3.9	4.3	4.8	5.2	5.6
	ft/min	427	512	597	682	768	853	938	1024	1109

CHANGE: New chart