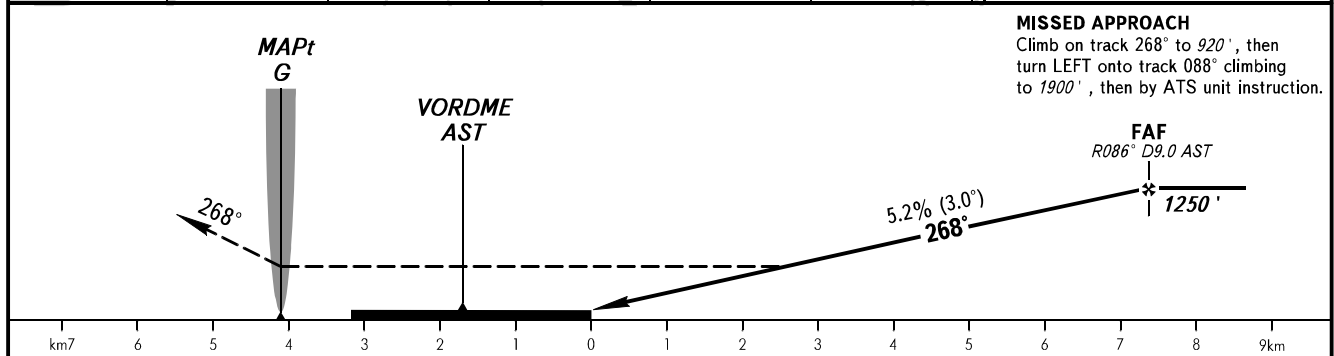
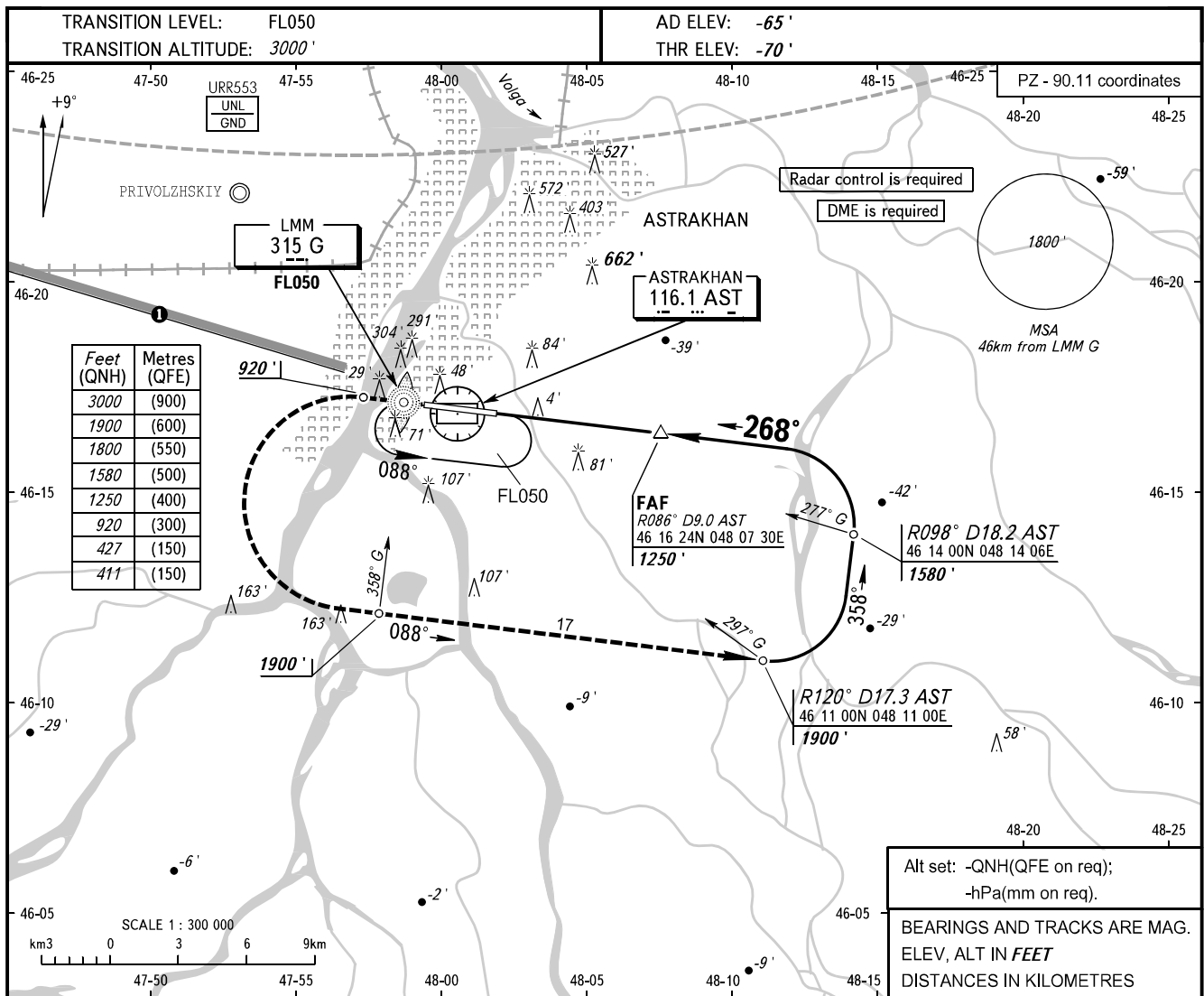


**INSTRUMENT
APPROACH
CHART - ICAO**

RADAR **120.600**
TOWER **118.600**

ASTRAKHAN, RUSSIA
ASTRAKHAN
NDB Z RWY 27



OCA(H)		A	B	C	D
Straight-in Approach	With FAF	411' (493')	411' (493')	411' (493')	411' (493')
	WO FAF	427' (493')	427' (493')	427' (493')	427' (493')

WARNING
Heavy turbulence with down-draughts and windshear may be expected on final.

ACFT flying to the North of limiting bearing line 279° from ARP at the distance from 5 to 40km at FL200 or below shall be carried out on coordination with ATS unit.

GROUND SPEED	km/h	150	180	210	240	270	300	330	360	390
FAF-THR 7350m	min:sec	2:56	2:27	2:06	1:50	1:38	1:28	1:20	1:13	1:08
RATE OF DESCENT	m/s	2.2	2.6	3.0	3.5	3.9	4.3	4.8	5.2	5.6
	ft/min	427	512	597	682	768	853	938	1024	1109