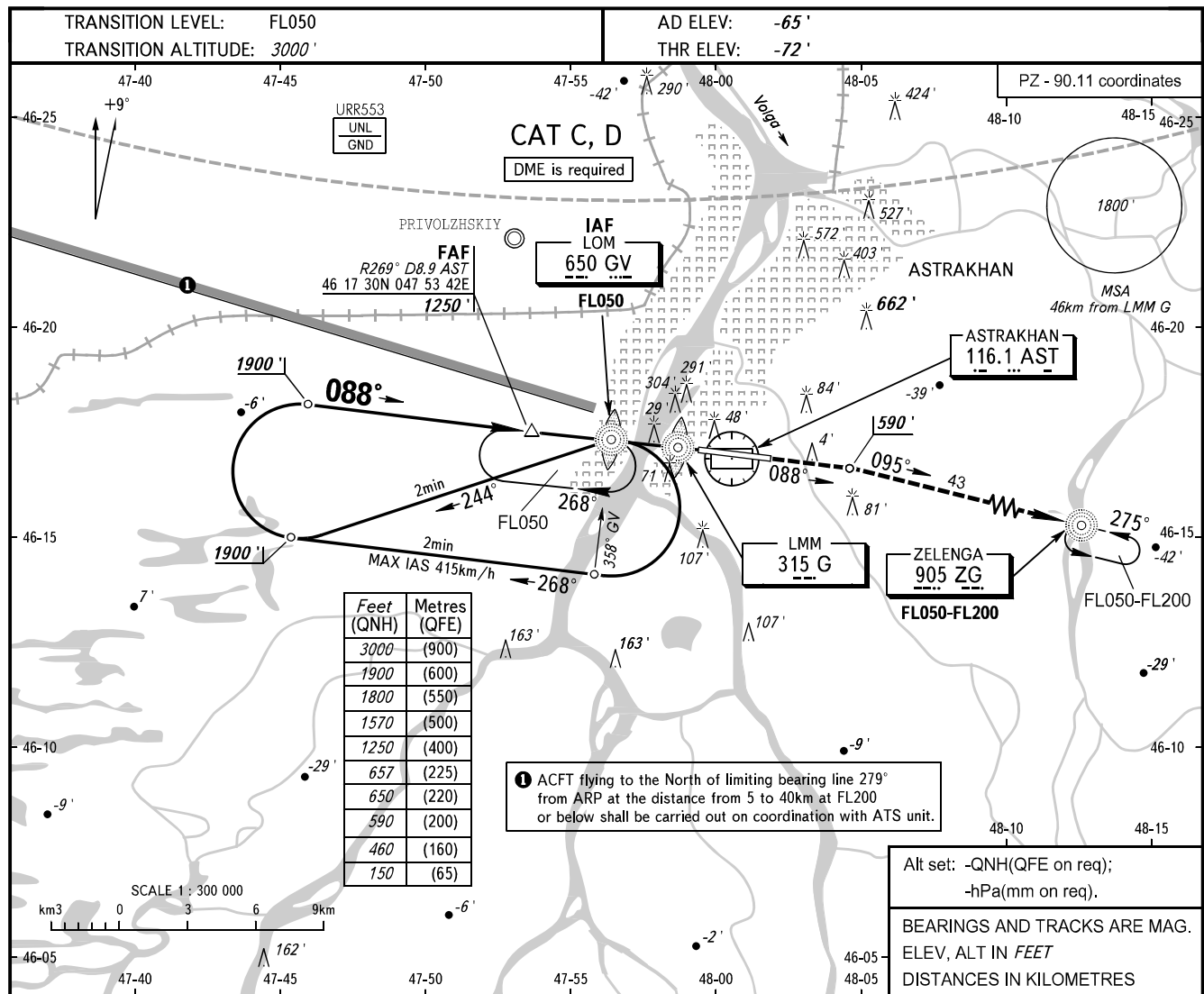


**INSTRUMENT
APPROACH
CHART - ICAO**

RADAR **120.600**
TOWER **118.600**

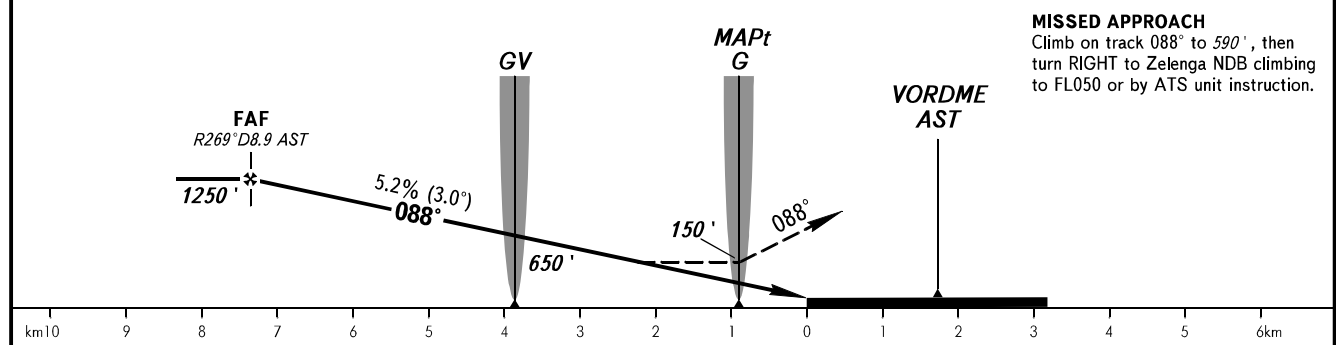
ASTRAKHAN, RUSSIA
ASTRAKHAN
2 NDB Y RWY 09



Feet (QNH)	Metres (QFE)
3000	(900)
1900	(600)
1800	(550)
1570	(500)
1250	(400)
657	(225)
650	(220)
590	(200)
460	(160)
150	(65)

① ACFT flying to the North of limiting bearing line 279° from ARP at the distance from 5 to 40km at FL200 or below shall be carried out on coordination with ATS unit.

Alt set: -QNH(QFE on req);
-hPa(mm on req).
BEARINGS AND TRACKS ARE MAG.
ELEV, ALT IN FEET
DISTANCES IN KILOMETRES



MISSED APPROACH
Climb on track 088° to 590', then turn RIGHT to Zelenga NDB climbing to FL050 or by ATS unit instruction.

OCA(H)		A	B	C	D
Straight-in Approach	With FAF			460' (525')	460' (525')
	WO FAF			657' (739')	657' (739')

WARNING
Heavy turbulence with down-draughts and windshear may be expected on final.
NOTE:
1. Race track procedure shall be carried out after STAR UP 4A, OMIRA 4A.
2. Reversal procedure shall be carried out after STAR ZG 4A.

GROUND SPEED	km/h	150	180	210	240	270	300	330	360	390
FAF-MAPt 6444m	min:sec	2:35	2:09	1:50	1:37	1:26	1:17	1:10	1:04	0:59
RATE OF DESCENT	m/s	2.2	2.6	3.0	3.5	3.9	4.3	4.8	5.2	5.6
	ft/min	427	512	597	682	768	853	938	1024	1109

CHANGE: New chart