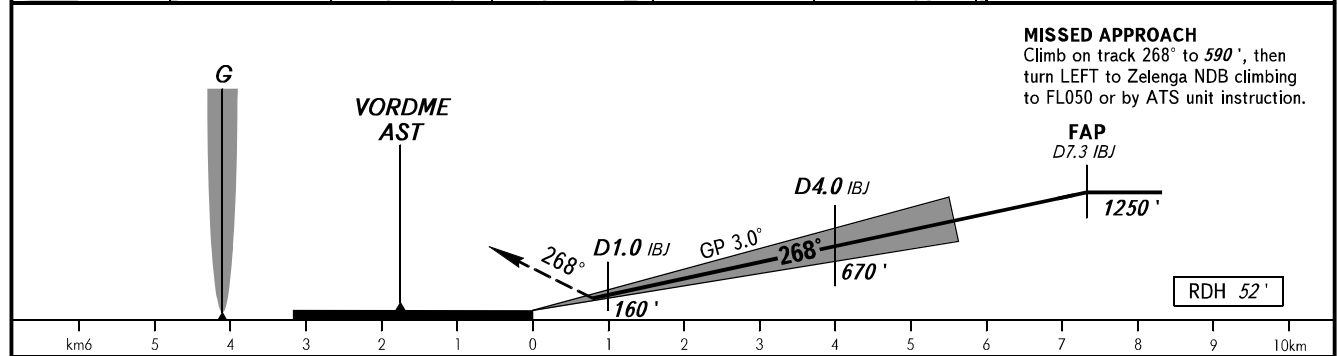
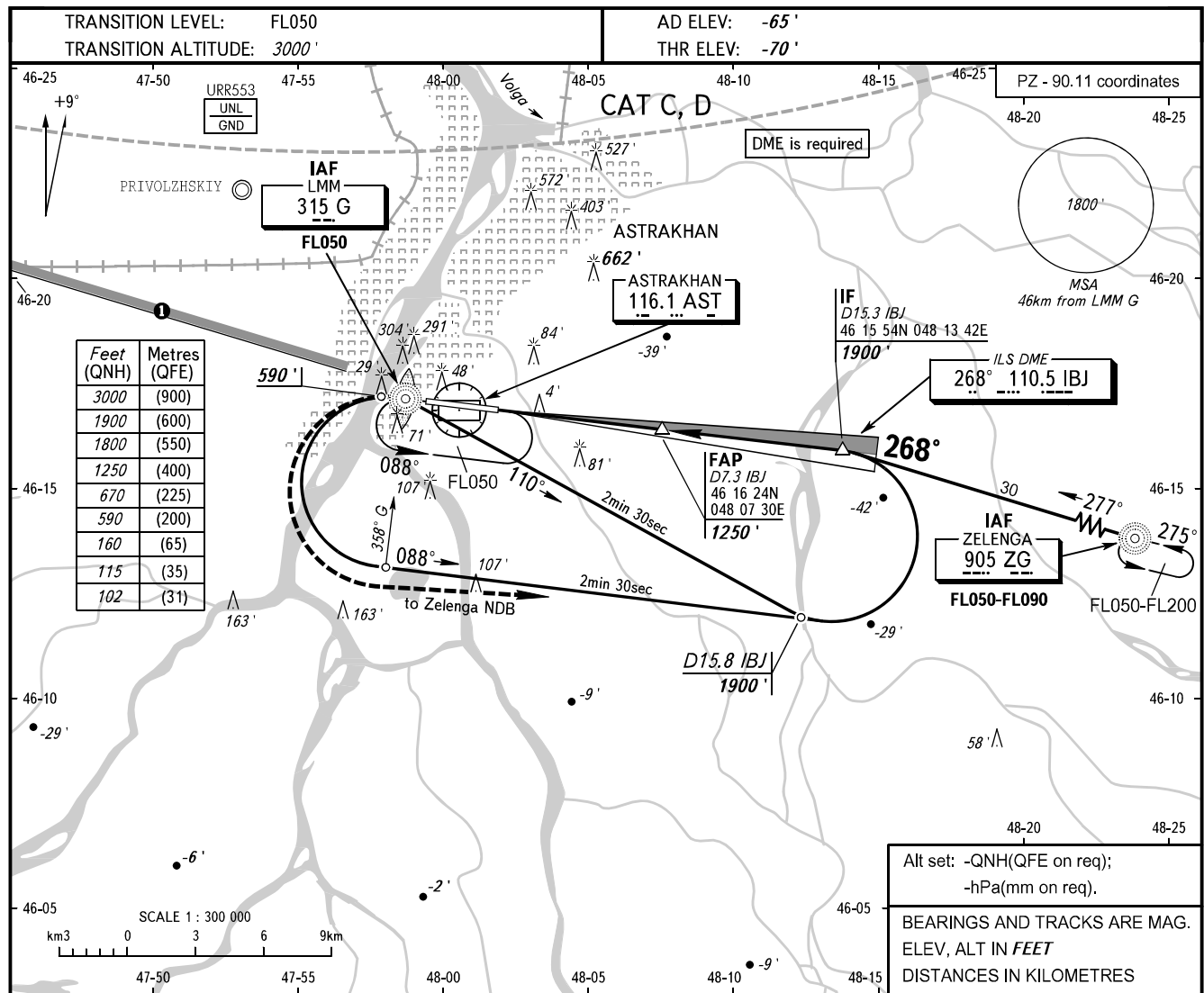


**INSTRUMENT
APPROACH
CHART - ICAO**

RADAR **120.600**
TOWER **118.600**

ASTRAKHAN, RUSSIA
ASTRAKHAN
ILS Y RWY 27 CAT I



OCA(H)		A	B	C	D
Straight-in	CAT I			102' (171')	115' (184')
	Approach				

WARNING
Heavy turbulence with down-draughts and windshear may be expected on final.

NOTE:
1. Race track procedure shall be carried out after STAR UP 2A.
2. Reversal procedure shall be carried out after STAR OMIRA 2A.

① ACFT flying to the North of limiting bearing line 279° from ARP at the distance from 5 to 40km at FL200 or below shall be carried out on coordination with ATS unit.

GROUND SPEED	km/h	150	180	210	240	270	300	330	360	390
RATE OF DESCENT	m/s	2.2	2.6	3.0	3.5	3.9	4.3	4.8	5.2	5.6
	ft/min	427	512	597	682	768	853	938	1024	1109