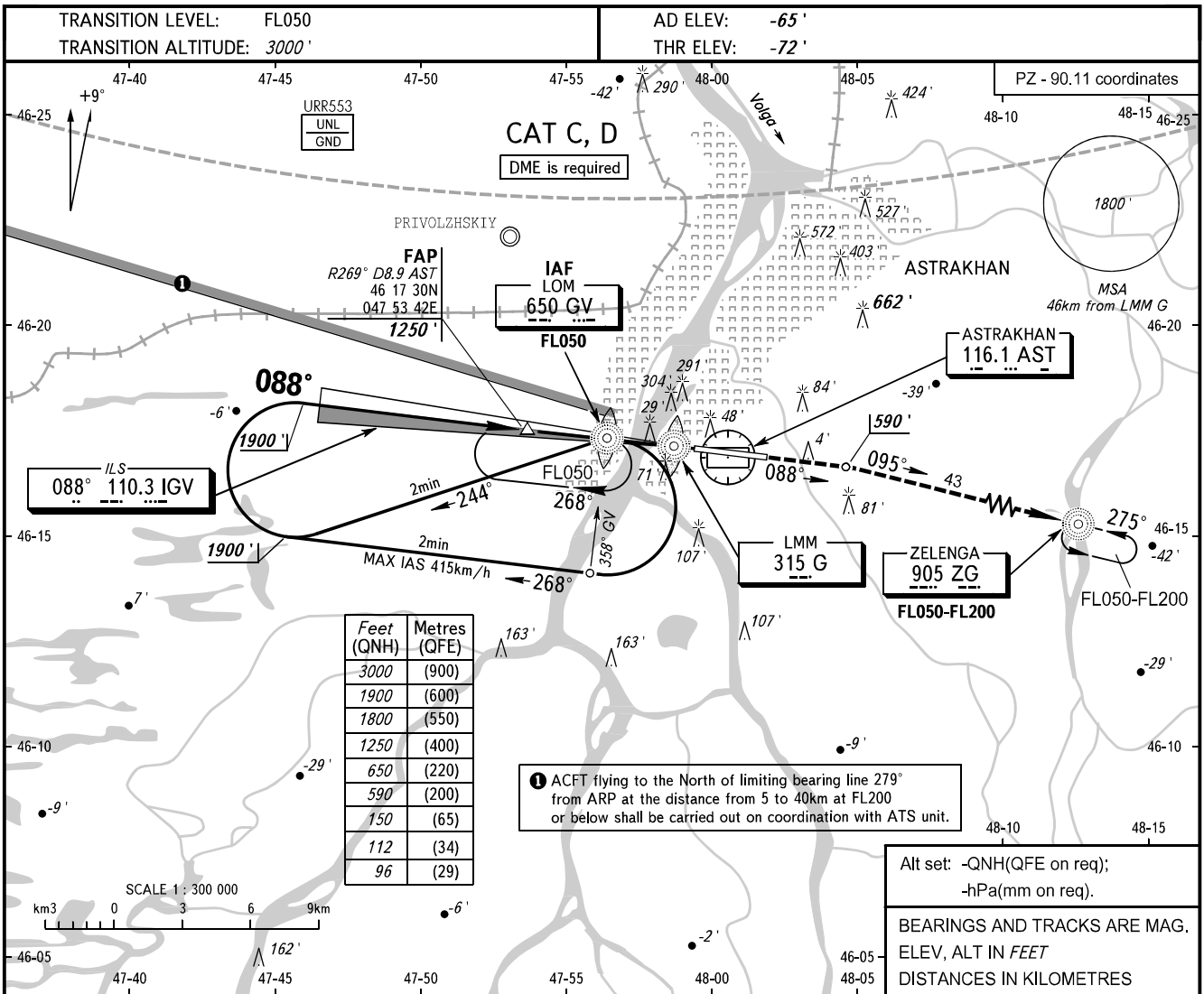


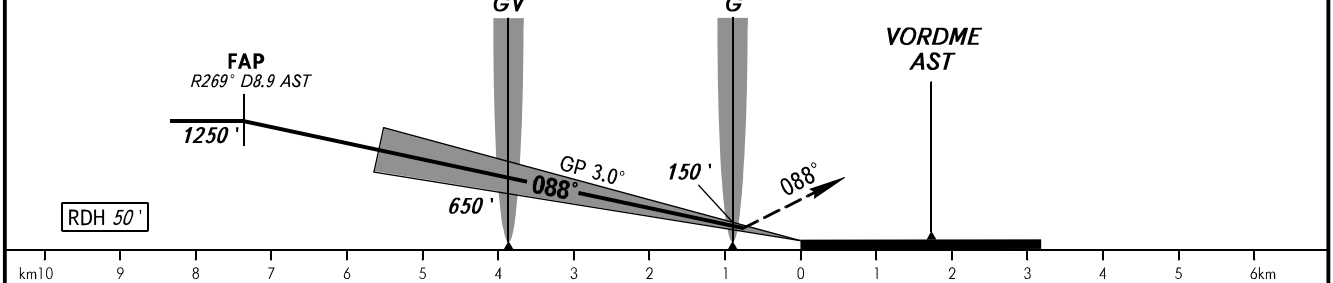
**INSTRUMENT  
APPROACH  
CHART - ICAO**

**ASTRAKHAN, RUSSIA  
ASTRAKHAN  
ILS Y RWY 09 CAT I**

RADAR	120.600
TOWER	118.600



**MISSED APPROACH**  
Climb on track 088° to 590', then turn RIGHT to Zelenga NDB climbing to FL050 or by ATS unit instruction.



OCA(H)		A	B	C	D	WARNING Heavy turbulence with down-draughts and windshear may be expected on final. NOTE: 1. Race track procedure shall be carried out after STAR UP 4A, OMIRA 4A. 2. Reversal procedure shall be carried out after STAR ZG 4A.				
Straight-in	CAT I			96' (165')	112' (181')					
Approach										
GROUND SPEED	km/h	150	180	210	240	270	300	330	360	390
RATE OF DESCENT	m/s	2.2	2.6	3.0	3.5	3.9	4.3	4.8	5.2	5.6
	ft/min	427	512	597	682	768	853	938	1024	1109