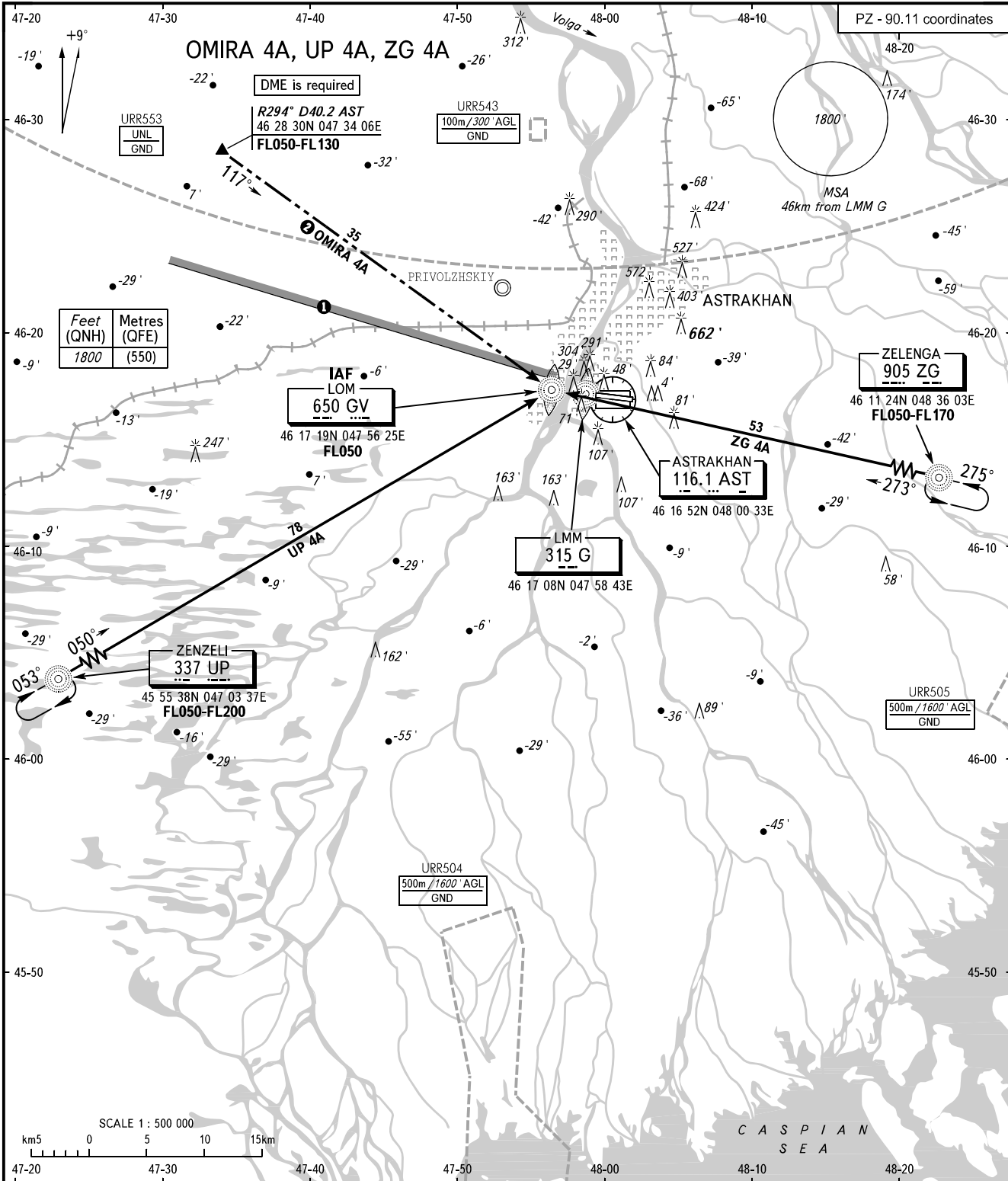


STANDARD ARRIVAL CHART
INSTRUMENT (STAR) - ICAO

TRANSITION
LEVEL: **FL050**

ASTRAKHAN, RUSSIA
ASTRAKHAN
RWY 09



APPROACH	126.000
KRUG	120.600
TOWER	118.600

- ① ACFT flying to the North of limiting bearing line 279° from ARP at the distance from 5 to 40km at FL200 or below shall be carried out on coordination with ATS unit.
- ② Only for Russian users of airspace.

BEARINGS AND TRACKS ARE MAGNETIC
ALTITUDES AND ELEVATIONS IN FEET
DISTANCES IN KILOMETRES

CHANGE: New chart