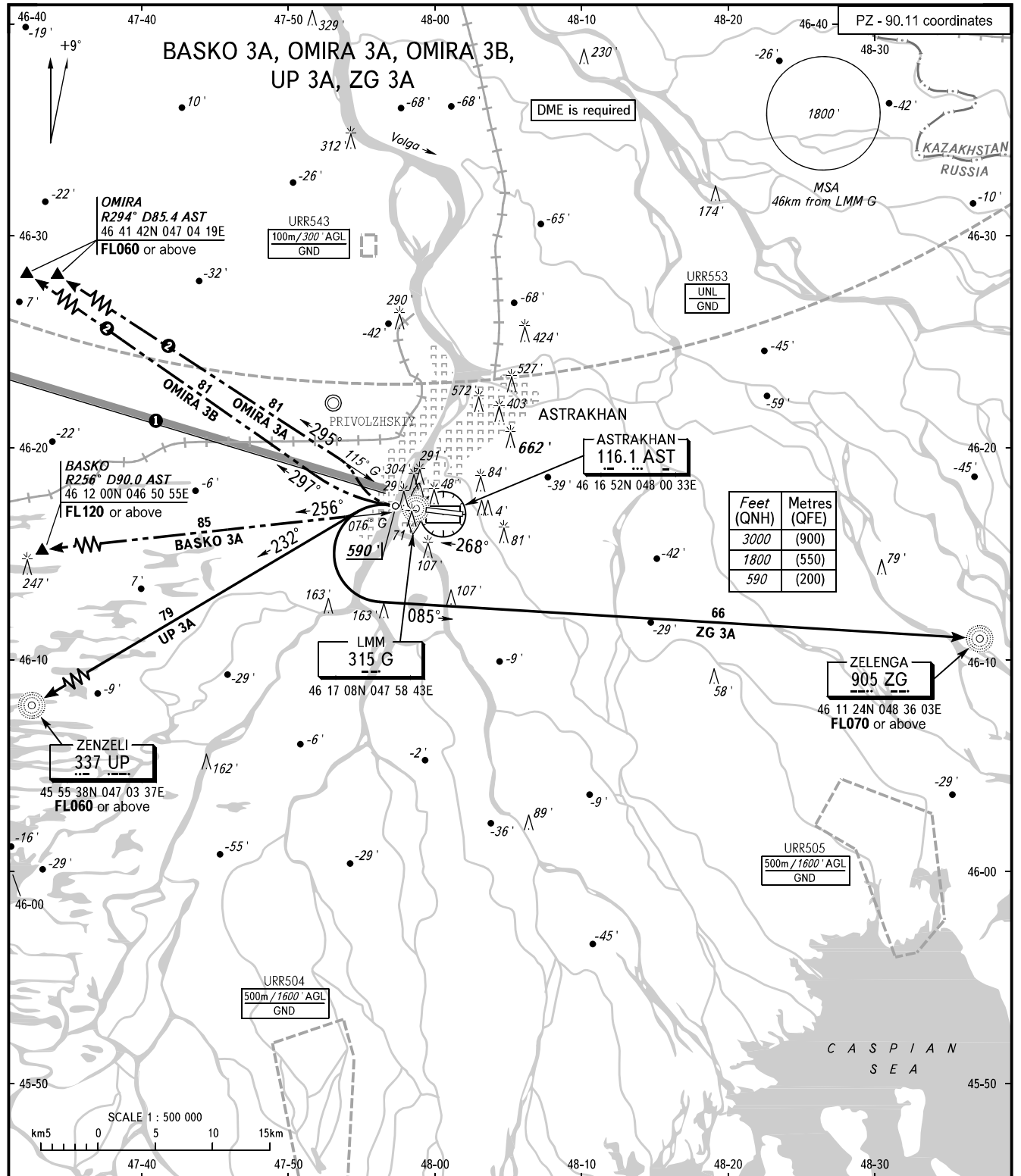


STANDARD DEPARTURE CHART
INSTRUMENT (SID) - ICAO

TRANSITION
ALTITUDE: 3000'

ASTRAKHAN, RUSSIA
ASTRAKHAN
RWY 27



TOWER **118.600**
RADAR **120.600**
APPROACH **126.000**

- ① ACFT flying to the North of limiting bearing line 279° from ARP at the distance from 5 to 40km at FL200 or below shall be carried out on coordination with ATS unit.
- ② Only for Russian users of airspace.

BEARINGS AND TRACKS ARE MAGNETIC
ALTITUDES AND ELEVATIONS IN FEET
DISTANCES IN KILOMETRES