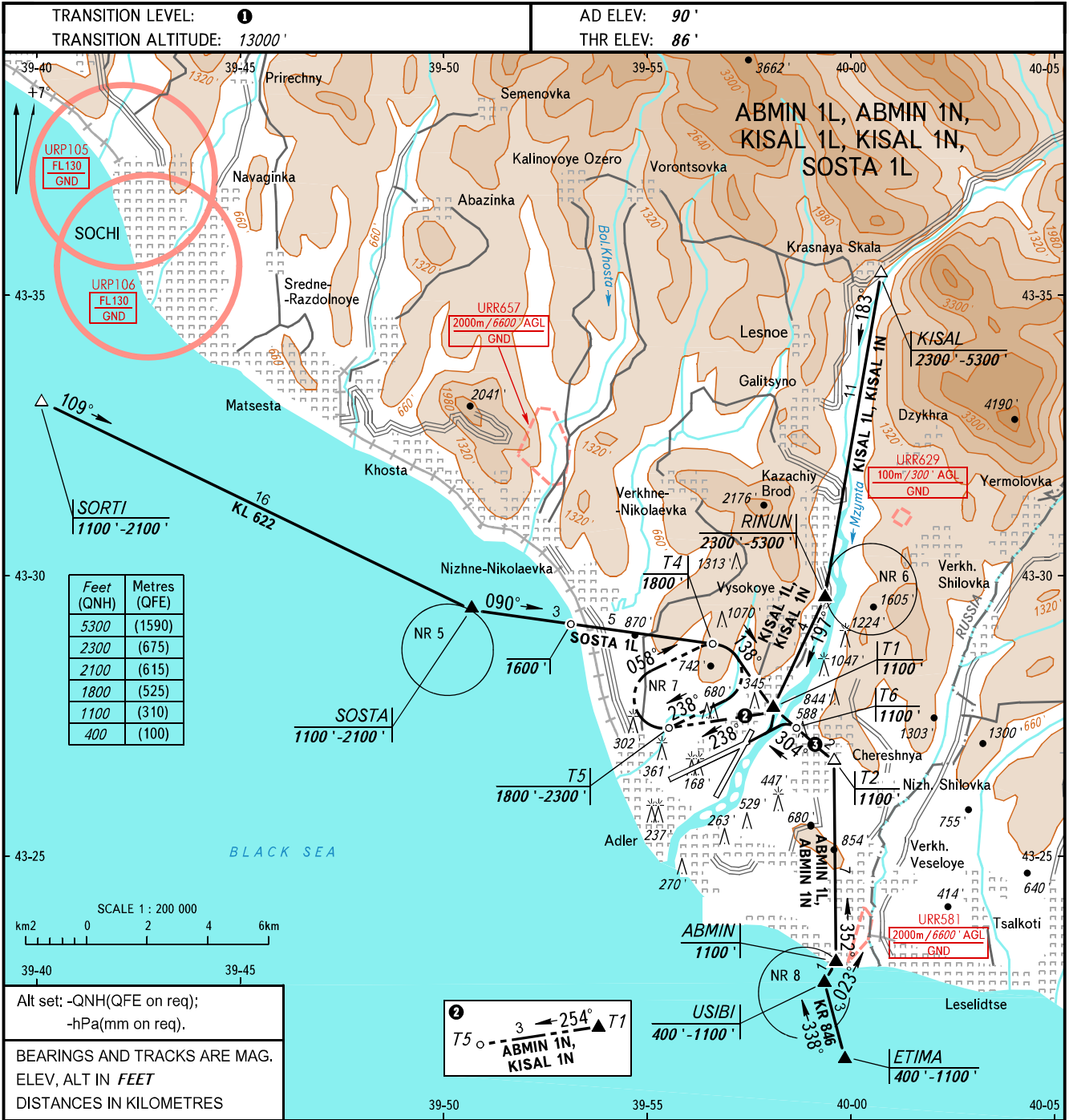


VFR  
APPROACH  
CHART

CONTROL	118.500
TOWER	121.200

SOCHI, RUSSIA  
SOCHI  
RWY 24



**WARNING**  
Holding area SOSTA (NR 5):  
Holding altitude for one-way traffic is by ATC instruction, but not below 1100'.  
Right turns, speed 150km/h, bank 10'.  
Holding area RINUN (NR 6):  
Holding altitude is by ATC instruction, but not below 2700'. Left turns, speed 150km/h, bank 10'.  
Holding area OREL IZUMRUD (NR 7):  
Fly in the holding area on track 058° by making two 180-degree turns, speed 150km/h, altitude 1800' - 2300', bank 10', straight leg timing is 1min. Right turns.  
Holding area ABMIN (NR 8):  
Holding altitude is by ATC instruction, but not below 500'. Left turns, speed 150km/h, bank 10'.

**MISSED APPROACH**  
From 250' climb to 1100', turn RIGHT onto track 058°, carry out missed approach.

**3 ABMIN 1L, ABMIN 1N**

ACFT CAT		A, HEL	
		DAY	NIGHT
MET conditions	Cloud base, m	450	750
	Visibility, m	2000	4000

**1 TRANSITION LEVEL:**  
- FL140 when QNH is 1013 hPa (760mm mercury column) or above;  
- FL150 when QNH is 977 hPa (733mm mercury column) or above, but less than 1013 hPa (760mm mercury column);  
- FL160 when QNH is less than 977 hPa (733mm mercury column).

CHANGE: New chart