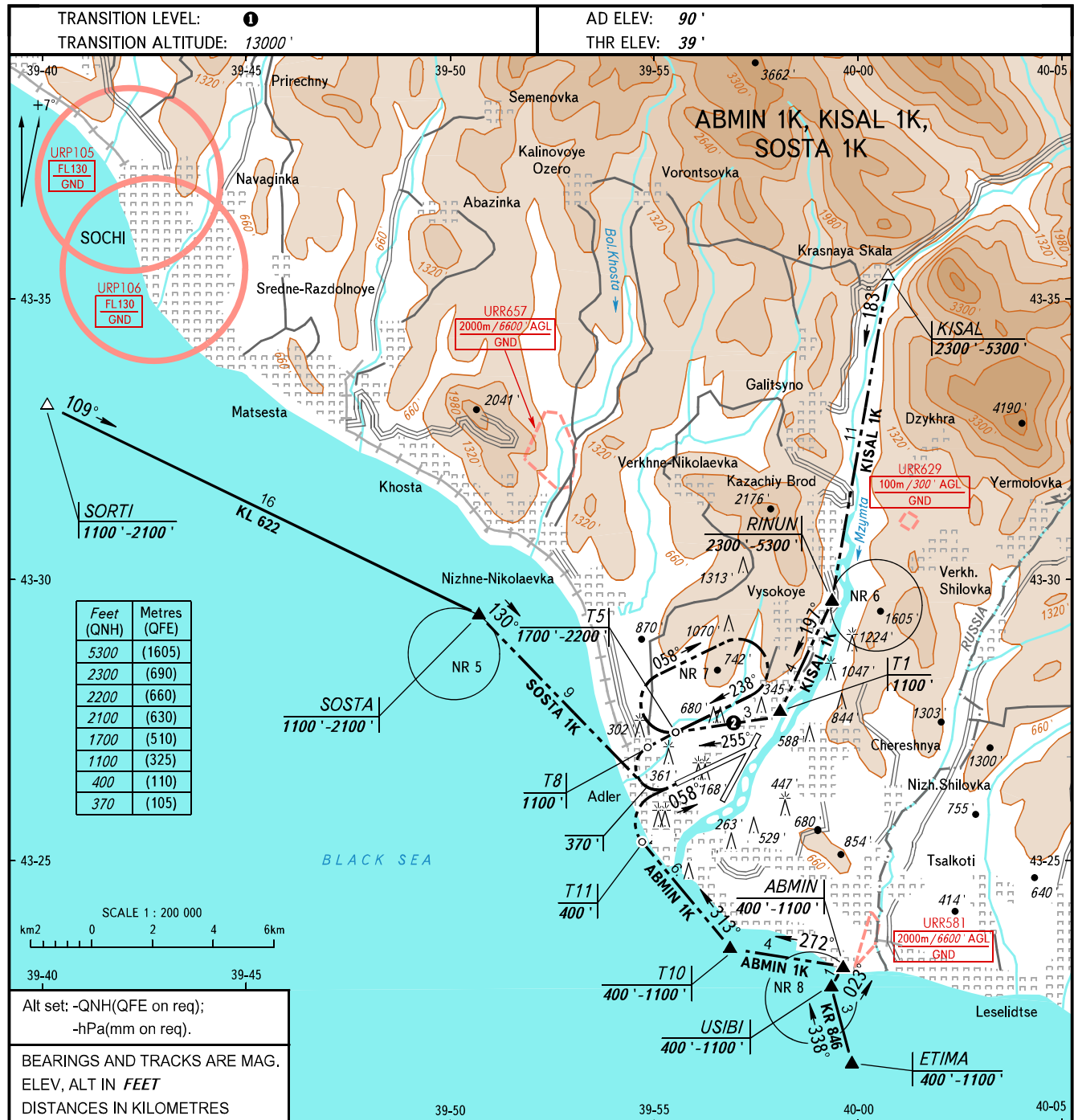


VFR
APPROACH
CHART

CONTROL 118.500
TOWER 121.200

SOCHI, RUSSIA
SOCHI
X RWY 06



WARNING
Holding area SOSTA (NR 5):
Holding altitude for one-way traffic is by ATC instruction, but not below 1100'.
Right turns, speed 150km/h, bank 10°.
Holding area RINUN (NR 6):
Holding altitude is by ATC instruction, but not below 2700'. Left turns, speed 150km/h, bank 10°.
Holding area OREL IZUMRUD (NR 7):
Fly in the holding area on track 058° by making two 180-degree turns, speed 150km/h, altitude 1800'-2300', bank 10°, straight leg timing is 1min. Right turns.
Holding area ABMIN (NR 8):
Holding altitude is by ATC instruction, but not below 500'. Left turns, speed 150km/h, bank 10°.

MISSED APPROACH
From 210' climb to 1100', turn RIGHT onto track 238°, carry out missed approach.

2 KISAL 1K

ACFT CAT		A, HEL	
MET conditions		DAY	NIGHT
Cloud base, m		450	750
Visibility, m		2000	4000

1 TRANSITION LEVEL:
- FL140 when QNH is 1013 hPa (760mm mercury column) or above;
- FL150 when QNH is 977 hPa (733mm mercury column) or above, but less than 1013 hPa (760mm mercury column);
- FL160 when QNH is less than 977 hPa (733mm mercury column).