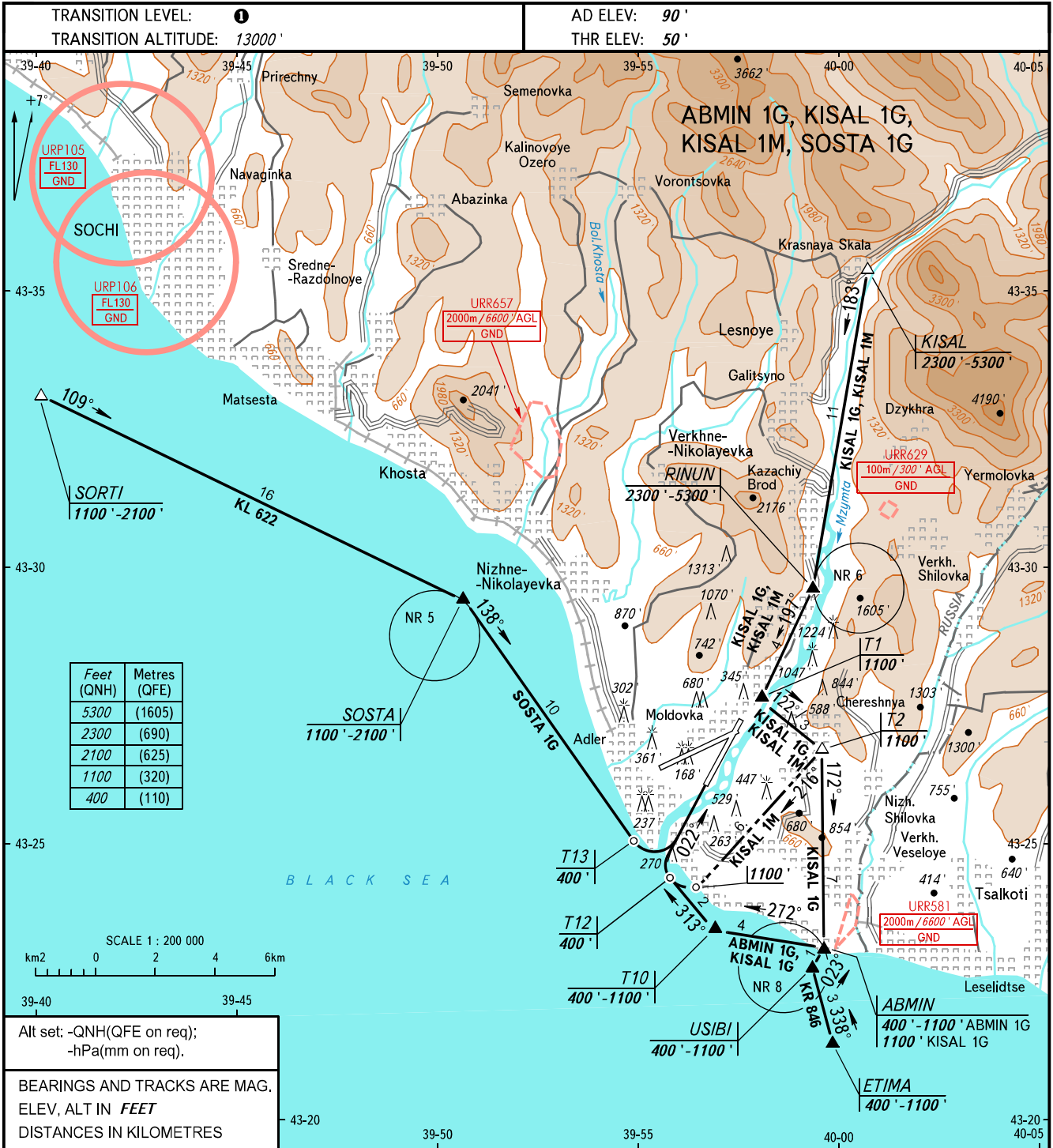


VFR
APPROACH
CHART

| | |
|---------|---------|
| CONTROL | 118.500 |
| TOWER | 135.800 |

SOCHI, RUSSIA
SOCHI
RWY 02



WARNING
Holding area SOSTA (NR 5):
Holding altitude for one-way traffic is by ATC instruction, but not below 1100'. Right turns, speed 150km/h, bank 10'.
Holding area RINUN (NR 6):
Holding altitude is by ATC instruction, but not below 2700'. Left turns, speed 150km/h, bank 10'.
Holding area ABMIN (NR 8):
Holding altitude is by ATC instruction, but not below 500'. Left turns, speed 150km/h, bank 10'.

MISSED APPROACH
From 220' climb to 1100',
turn RIGHT onto track 202',
carry out missed approach.

| ACFT CAT | | A, HEL | |
|----------------|---------------|--------|-------|
| | | DAY | NIGHT |
| MET conditions | Cloud base, m | 450 | 750 |
| | Visibility, m | 2000 | 4000 |

1 TRANSITION LEVEL:
- FL140 when QNH is 1013 hPa (760mm mercury column) or above;
- FL150 when QNH is 977 hPa (733mm mercury column) or above, but less than 1013 hPa (760mm mercury column);
- FL160 when QNH is less than 977 hPa (733mm mercury column).

CHANGE: New chart