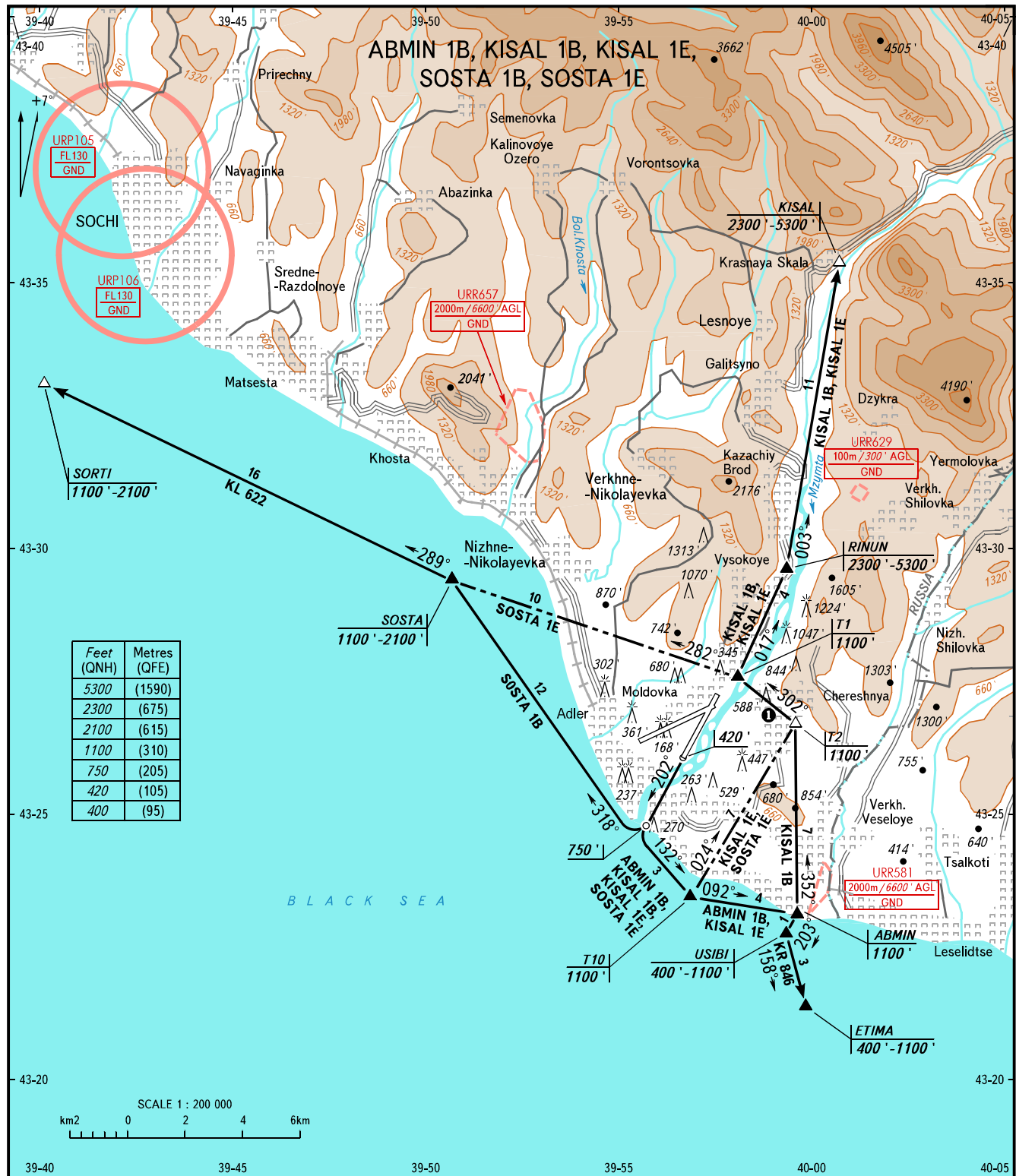


VFR  
DEPARTURE  
CHART

SOCHI, RUSSIA  
SOCHI  
RWY 20

TRANSITION  
ALTITUDE: 13000'



CONTROL 118.500  
TOWER 135.800

**WARNING**  
Turns of class 4 ACFT and HEL after take-off shall be carried out after climbing to 750' and passing the coastline.

① KISAL 1B, KISAL 1E, SOSTA 1E

BEARINGS AND TRACKS ARE MAGNETIC  
ALTITUDES AND ELEVATIONS IN FEET  
DISTANCES IN KILOMETRES

Alt set: -QNH(QFE on req);  
-hPa(mm on req).