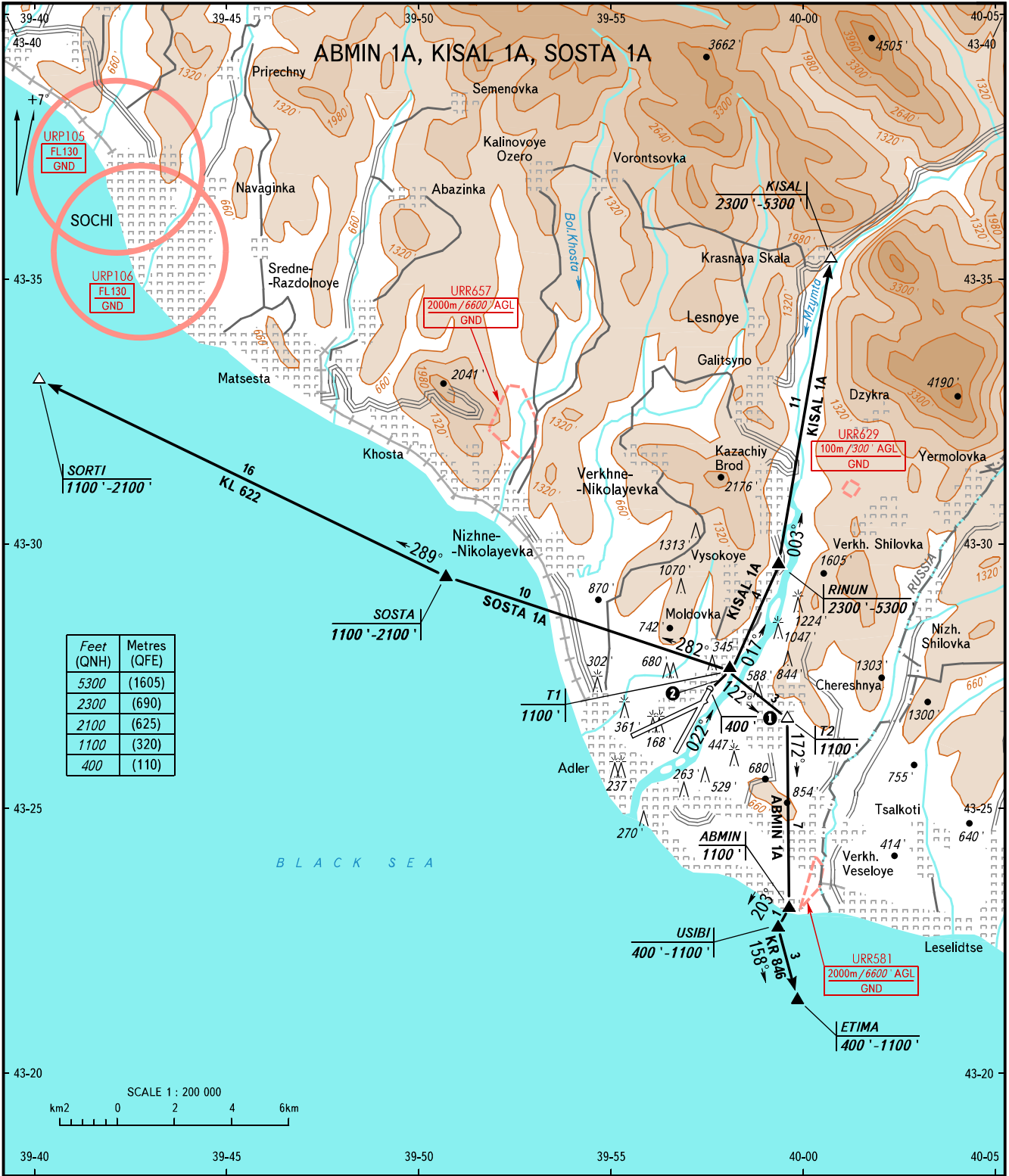


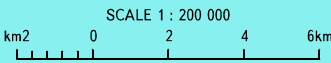
VFR
DEPARTURE
CHART

SOCHI, RUSSIA
SOCHI
RWY 02

TRANSITION
ALTITUDE: 13000'



Feet (QNH)	Metres (QFE)
5300	(1605)
2300	(690)
2100	(625)
1100	(320)
400	(110)



CONTROL	118.500	1 ABMIN 1A
TOWER	135.800	2 BRG 044°

BEARINGS AND TRACKS ARE MAGNETIC
ALTITUDES AND ELEVATIONS IN FEET
DISTANCES IN KILOMETRES

Alt set: -QNH(QFE on req);
-hPa(mm on req).

CHANGE: New chart