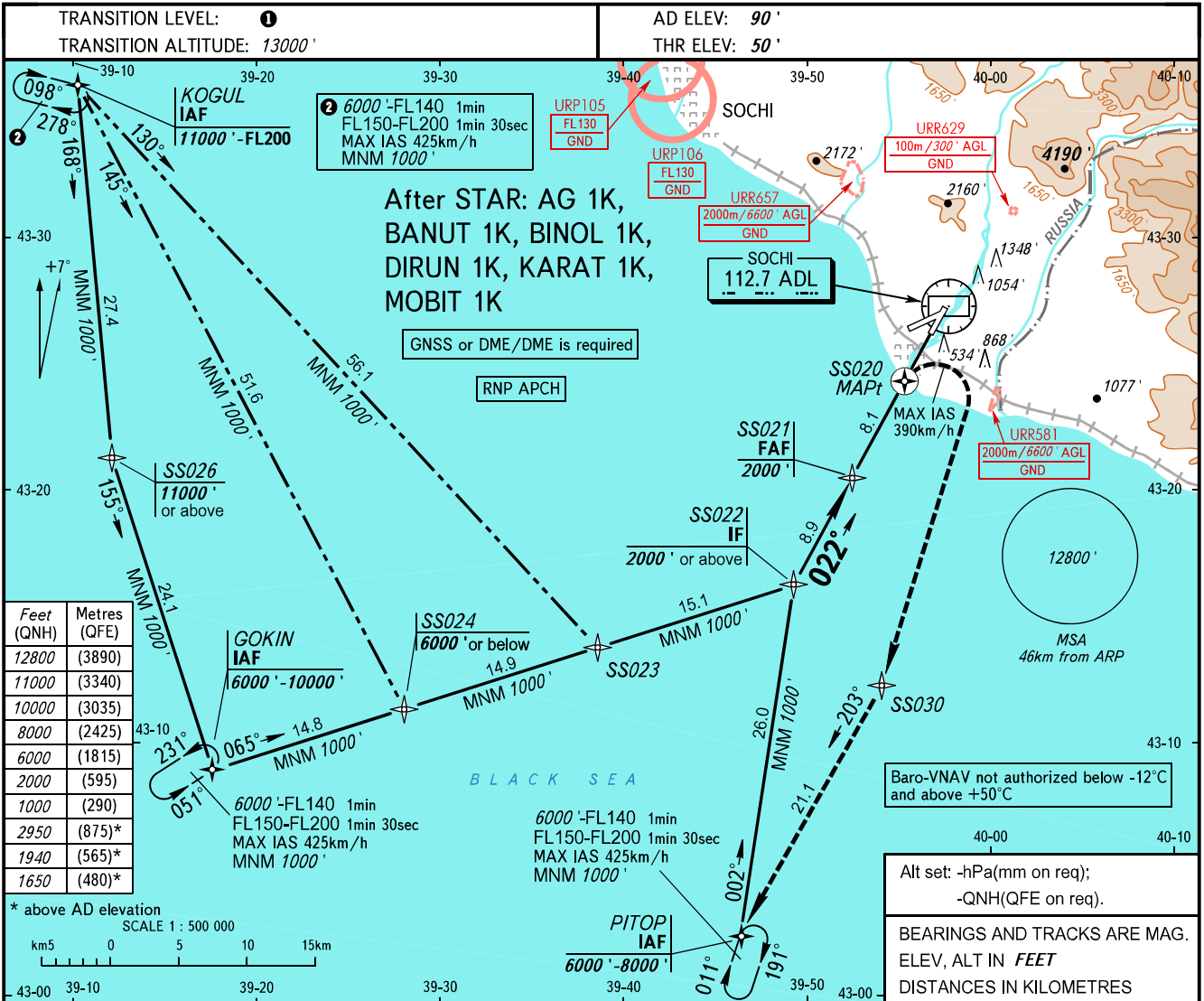


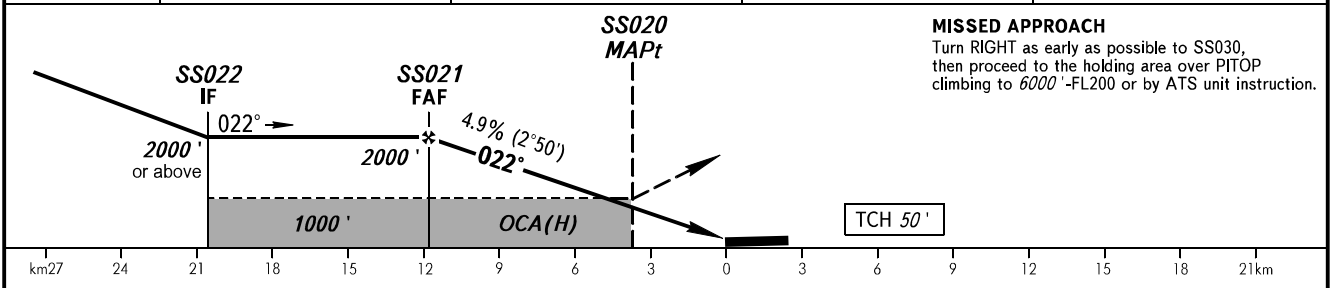
**INSTRUMENT
APPROACH
CHART - ICAO**

RADAR	119.700
TOWER	135.800

**SOCHI, RUSSIA
SOCHI
RNP RWY 02**



DIST to RW02	11.8	10.0	8.0	6.0
ALTITUDE	2000'	1710'	1390'	1060'



		OCA(H)	A	B	C	D	WARNING:						
Straight-in Approach	LNAV	MNM climb gradient for missed APCH	2.5%	910' (860')	950' (900')	980' (930')	1000' (950')	1. Heavy turbulence with down-draughts is expected on final. 2. DME/DME navigation is AVBL only before SS022. 1. TRANSITION LEVEL: - FL140 when QNH is 1013 hPa (760mm mercury column) or above; - FL150 when QNH is 977 hPa (733mm mercury column) or above, but less than 1013 hPa (760mm mercury column); - FL160 when QNH is less than 977 hPa (733mm mercury column).					
		5.0%	700' (650')	760' (710')	790' (740')	820' (770')							
	LNAV/VNAV	5.0%	650' (600')	710' (660')	750' (700')	780' (730')							
		5.0%	900' (850')	930' (880')	950' (900')	980' (930')							
Circling			1650' (1560')	1940' (1850')	2950' (2860')	2950' (2860')							
GROUND SPEED		km/h	150	180	210	240	270	300	330	360	390		
RATE OF DESCENT		m/s	2.0	2.5	2.9	3.3	3.7	4.1	4.5	4.9	5.3		
		ft/min	402	482	563	643	723	804	884	965	1045		

CHANGE: New chart