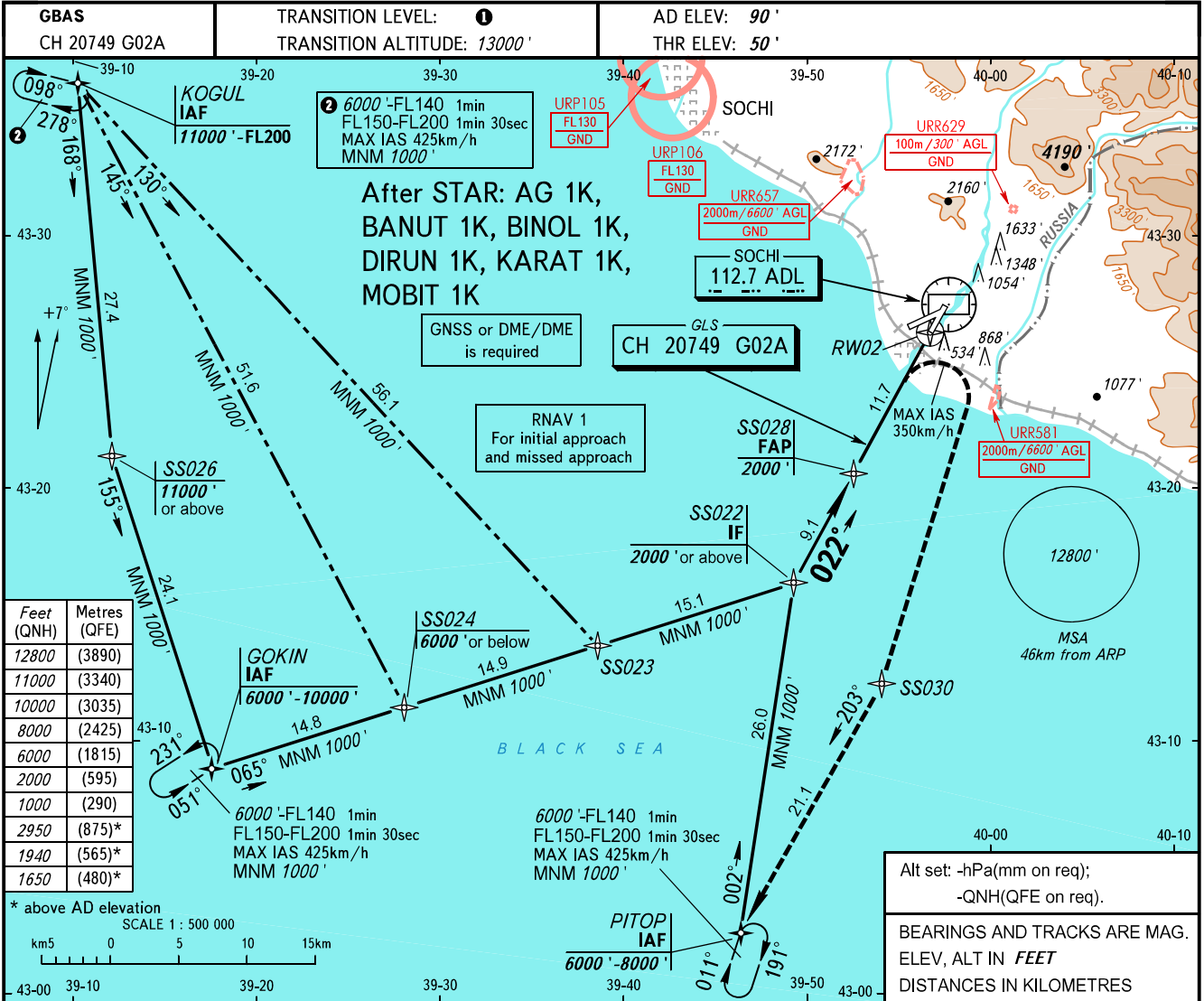


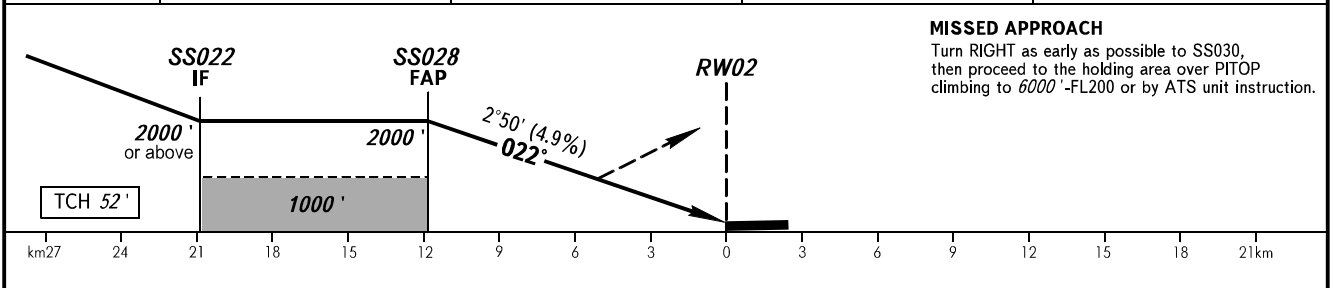
**INSTRUMENT
APPROACH
CHART - ICAO**

**SOCHI, RUSSIA
SOCHI
GLS RWY 02**

RADAR	119.700
TOWER	135.800



DIST to RW02	11.7	10.0	8.0	6.0
ALTITUDE	2000'	1710'	1390'	1070'



OCA(H)		A	B	C	D	WARNING: 1. Heavy turbulence with down-draughts is expected on final. 2. DME/DME navigation is AVBL only before SS022. TRANSITION LEVEL: - FL140 when QNH is 1013 hPa (760mm mercury column) or above; - FL150 when QNH is 977 hPa (733mm mercury column) or above, but less than 1013 hPa (760mm mercury column); - FL160 when QNH is less than 977 hPa (733mm mercury column).					
Straight-in Approach	MNM climb gradient for missed APCH	2.5%	781' (731')	930' (880')	939' (889')		949' (899')				
		3.0%	769' (719')	874' (824')	882' (832')		893' (843')				
		4.0%	728' (678')	773' (723')	782' (732')		792' (742')				
		5.0%	695' (645')	706' (656')	715' (665')		725' (675')				
Circling		1650' (1560')	1940' (1850')	2950' (2860')	2950' (2860')						
GROUND SPEED		km/h	150	180	210	240	270	300	330	360	390
RATE OF DESCENT		m/s	2.0	2.5	2.9	3.3	3.7	4.1	4.5	4.9	5.3
		ft/min	402	482	563	643	723	804	884	965	1045

CHANGE: New chart