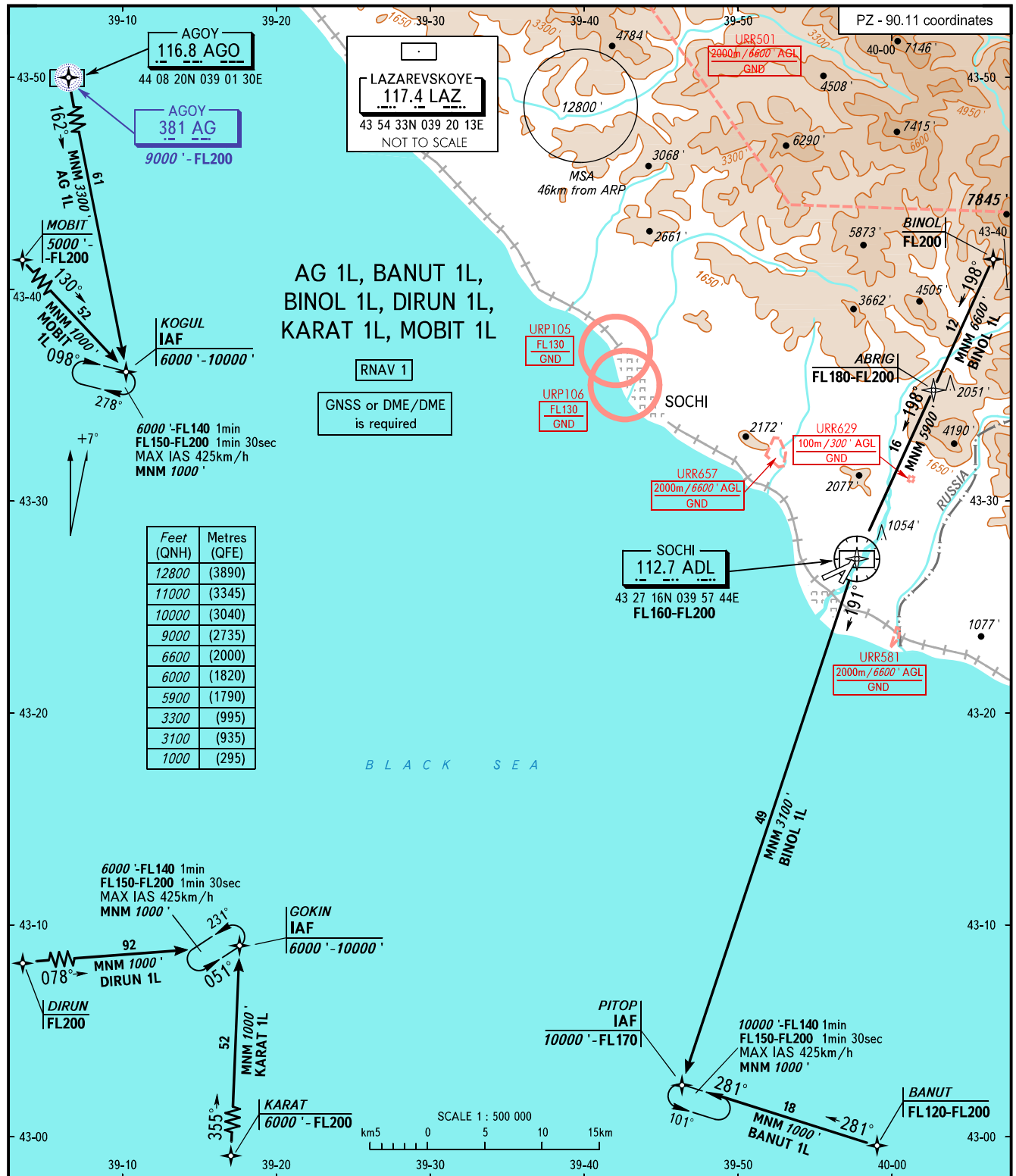


SOCHI, RUSSIA

SOCHI
RNAV RWY 06

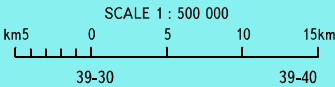
STANDARD ARRIVAL CHART INSTRUMENT (STAR) - ICAO

TRANSITION
LEVEL : **1**



Feet (QNH)	Metres (QFE)
12800	(3890)
11000	(3345)
10000	(3040)
9000	(2735)
6600	(2000)
6000	(1820)
5900	(1790)
3300	(995)
3100	(935)
1000	(295)

B L A C K S E A



APPROACH **124.600**
RADAR **119.700**
TOWER **121.200**

- 1** TRANSITION LEVEL:
- FL140 when QNH is 1013 hPa (760mm mercury column) or above;
 - FL150 when QNH is 977 hPa (733mm mercury column) or above, but less than 1013 hPa (760mm mercury column);
 - FL160 when QNH is less than 977 hPa (733mm mercury column).

BEARINGS AND TRACKS ARE MAGNETIC
ALTITUDES AND ELEVATIONS IN FEET
DISTANCES IN KILOMETRES

Alt set: -QNH(QFE on req);
-hPa(mm on req).