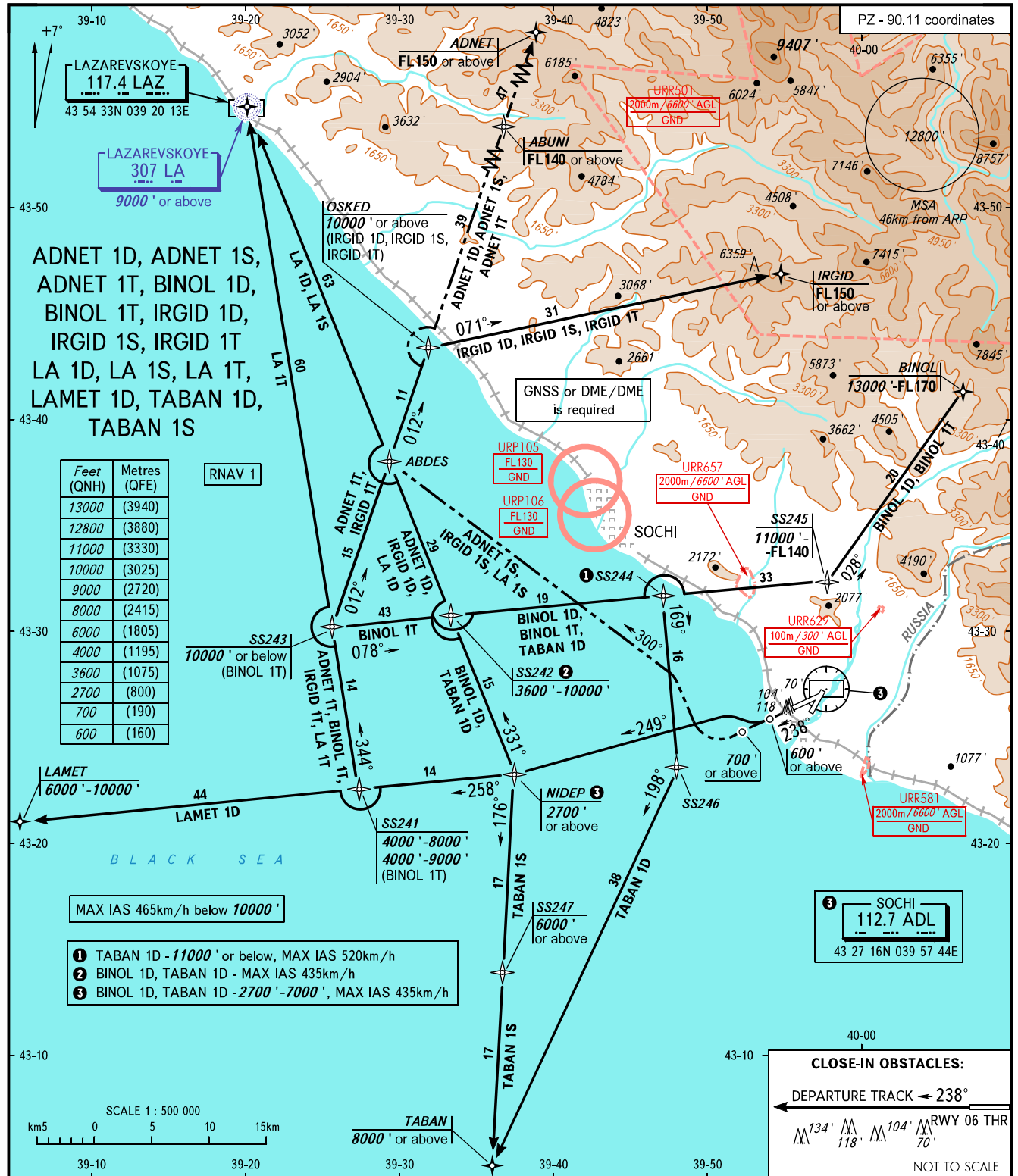


STANDARD DEPARTURE CHART  
INSTRUMENT (SID) - ICAO

TRANSITION  
ALTITUDE: 13000'

SOCHI, RUSSIA  
SOCHI  
RNAV RWY 24



TOWER **121.200** **WARNING:**  
 RADAR **119.700** 1. Turn before passing DER is PROHIBITED.  
 APPROACH **124.600** 2. Take-off shall be executed in accordance with noise abatement procedures as set in Aeroplane Flight Manual.  
 3. DME/DME navigation is AVBL only after passing NIDEP.

MNM climb gradients:  
 - 3.6% up to 9000' due to obstacles for IRGID 1S;  
 - 4.6% up to FL140 due to the airspace structure for ADNET 1D;  
 - 5.1% up to FL140 due to the airspace structure for ADNET 1S;  
 - 5.2% up to FL150 due to the airspace structure for BINOL 1D;  
 - 3.5% up to 11000' due to the airspace structure for BINOL 1T;  
 - 4.8% up to FL150 due to the airspace structure for IRGID 1D;  
 - 5.5% up to FL150 due to the airspace structure for IRGID 1S;  
 - 3.9% up to FL150 due to the airspace structure for IRGID 1T;  
 - 3.5% up to 9000' due to the airspace structure for LA 1S;  
 - 4.3% up to 6000' due to the airspace structure for TABAN 1S.

BEARINGS AND TRACKS ARE MAGNETIC  
 ALTITUDES AND ELEVATIONS IN FEET  
 DISTANCES IN KILOMETRES

Alt set: -QNH(QFE on req);  
 -hPa(mm on req).