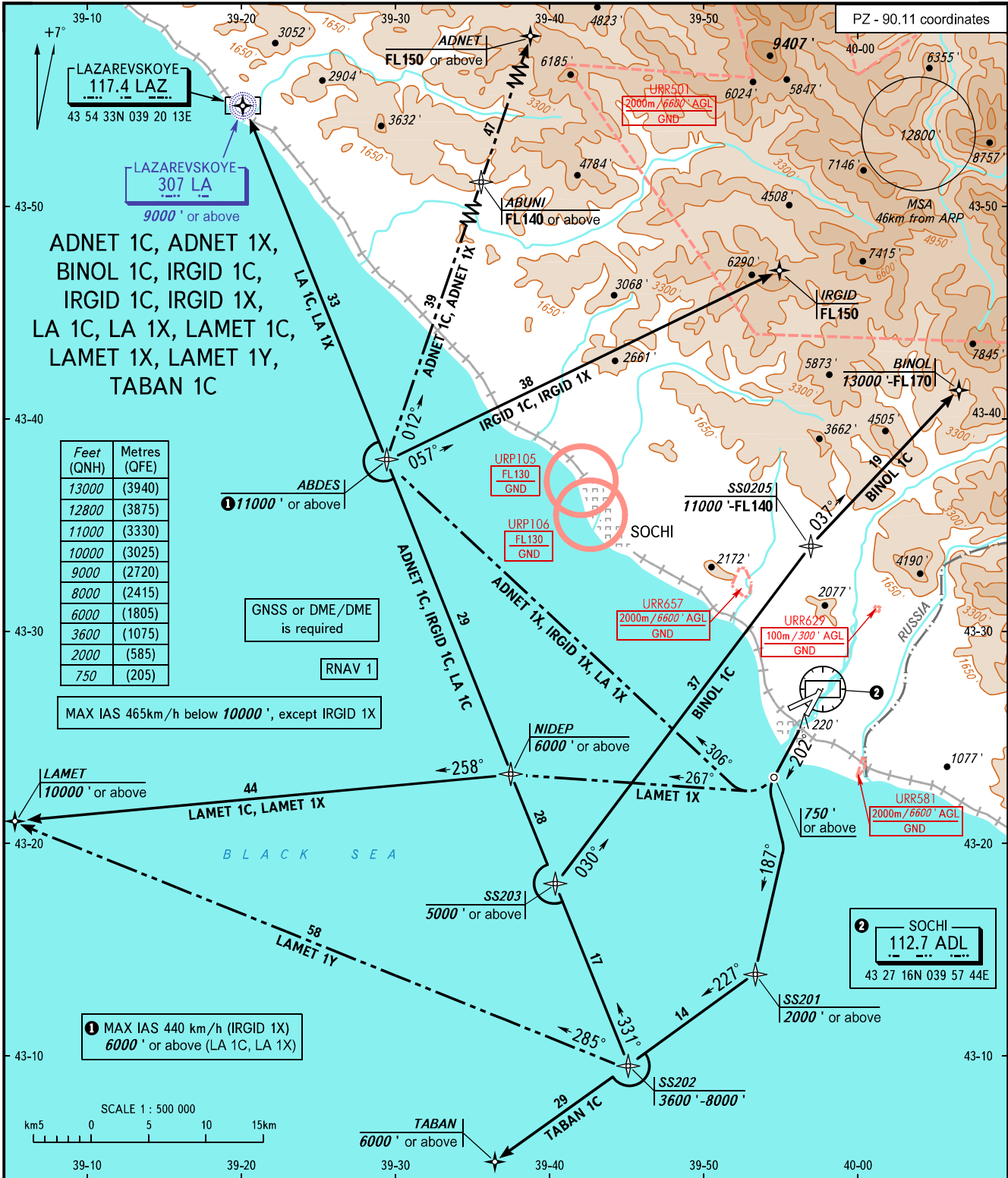


STANDARD DEPARTURE CHART
INSTRUMENT (SID) - ICAO

TRANSITION
ALTITUDE: 13000'

SOCHI, RUSSIA
SOCHI
RNAV RWY 20



TOWER 135.800
RADAR 119.700
APPROACH 124.600

WARNING:

1. Turn before passing DER is PROHIBITED.
2. Take-off shall be executed in accordance with noise abatement procedures as set in Aeroplane Flight Manual.
3. DME/DME navigation is AVBL only after passing SS201.

MNM climb gradients due to obstacles for all SIDs - 6.4% up to 750', then:

- 3.5% up to 11000' due to the airspace structure for ADNET 1C;
- 7.3% up to 11000' due to the airspace structure for ADNET 1X;
- 3.6% up to 11000' due to the airspace structure for BINOL 1C;
- 3.5% up to 11000' due to the airspace structure for IRGID 1C;
- 7.3% up to 11000' due to the airspace structure for IRGID 1X;
- 3.8% up to 6000' due to the airspace structure for LA 1X;
- 6.6% up to 6000' due to the airspace structure for LAMET 1X;
- 3.6% up to 6000' due to the airspace structure for TABAN 1C.

BEARINGS AND TRACKS ARE MAGNETIC
ALTITUDES AND ELEVATIONS IN FEET
DISTANCES IN KILOMETRES

Alt set; -QNH(QFE on req);
-hPa(mm on req).