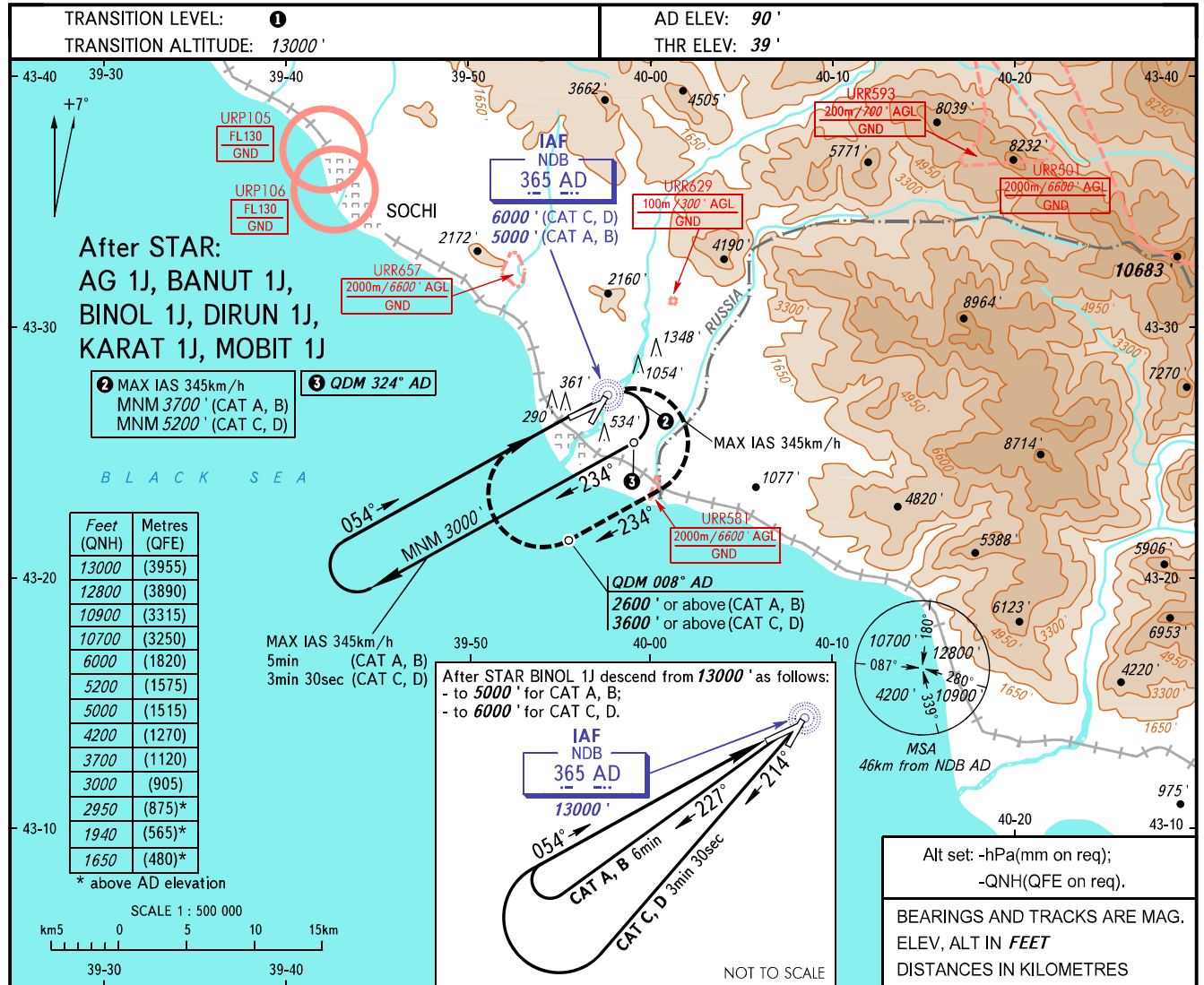


**INSTRUMENT
APPROACH
CHART - ICAO**

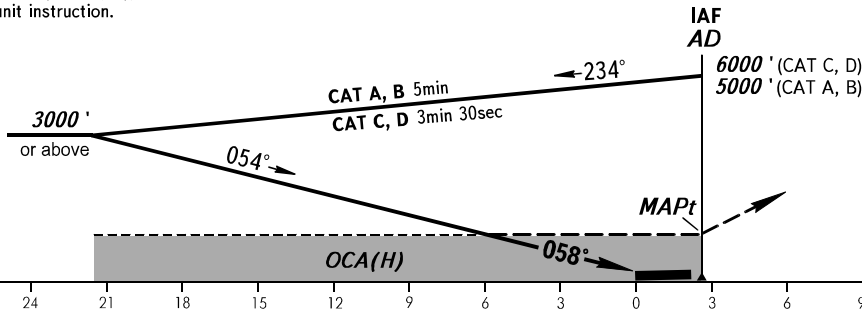
| | |
|-------|---------|
| RADAR | 119.700 |
| TOWER | 121.200 |

SOCHI, RUSSIA
SOCHI
NDB RWY 06



MISSED APPROACH

Turn RIGHT onto track 234° to intercept QDM 008° AD climbing to:
- 2600' or above (CAT A, B);
- 3600' or above (CAT C, D);
then turn RIGHT to NDB AD climbing to:
- 3700' or above (CAT A, B);
- 5200' or above (CAT C, D);
or by ATS unit instruction.



| OCA(H) | | A | B | C | D |
|-------------|----------|---------------|---------------|---------------|---------------|
| Straight-in | Approach | 1300' (1260') | 1450' (1410') | 1800' (1760') | 1800' (1760') |
| | | | | | |
| Circling | | 1650' (1560') | 1940' (1850') | 2950' (2860') | 2950' (2860') |

① **TRANSITION LEVEL:**
- FL140 when QNH is 1013 hPa (760mm mercury column) or above;
- FL150 when QNH is 977 hPa (733mm mercury column) or above, but less than 1013 hPa (760mm mercury column);
- FL160 when QNH is less than 977 hPa (733mm mercury column).

WARNING:
1. Heavy turbulence with down-draughts is expected on final.
2. Final approach track is offset by 4° from RCL.