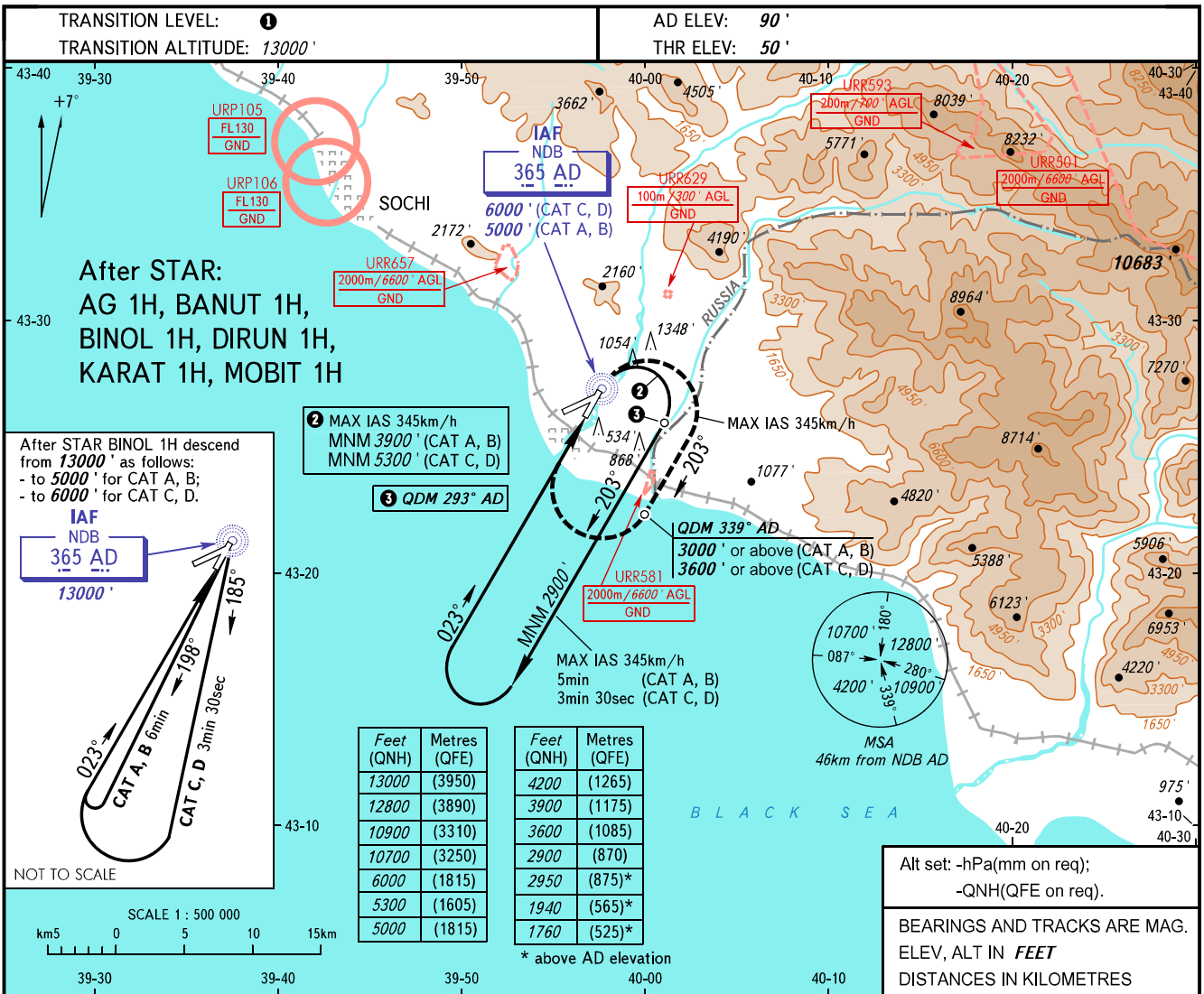


**INSTRUMENT  
APPROACH  
CHART - ICAO**

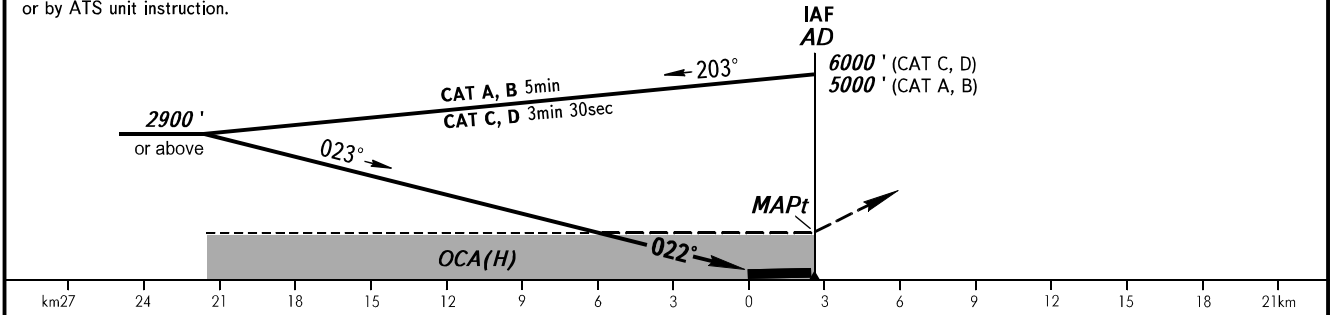
RADAR	119.700
TOWER	135.800

**SOCHI, RUSSIA  
SOCHI  
NDB RWY 02**



**MISSED APPROACH**  
Turn RIGHT onto track 203° to intercept QDM 339° AD climbing to:  
-3000' or above (CAT A, B);  
-3600' or above (CAT C, D);  
then turn RIGHT to NDB AD climbing to:  
-3900' or above (CAT A, B);  
-5300' or above (CAT C, D);  
or by ATS unit instruction.

**1** TRANSITION LEVEL:  
- FL140 when QNH is 1013 hPa (760mm mercury column) or above;  
- FL150 when QNH is 977 hPa (733mm mercury column) or above, but less than 1013 hPa (760mm mercury column);  
- FL160 when QNH is less than 977 hPa (733mm mercury column).



OCA(H)		A	B	C	D	<b>WARNING:</b> 1. Heavy turbulence with down-draughts is expected on final. 2. Deviation to the right is prohibited due to piers of transmission line up to 143' at 200-500m from RWY centre line. 3. Final approach track is offset by 1° from RCL.
Straight-in	Approach	1760' (1710')	1780' (1730')	1830' (1780')	1830' (1780')	
	Circling	1760' (1710')	1940' (1850')	2950' (2860')	2950' (2860')	

CHANGE: New chart