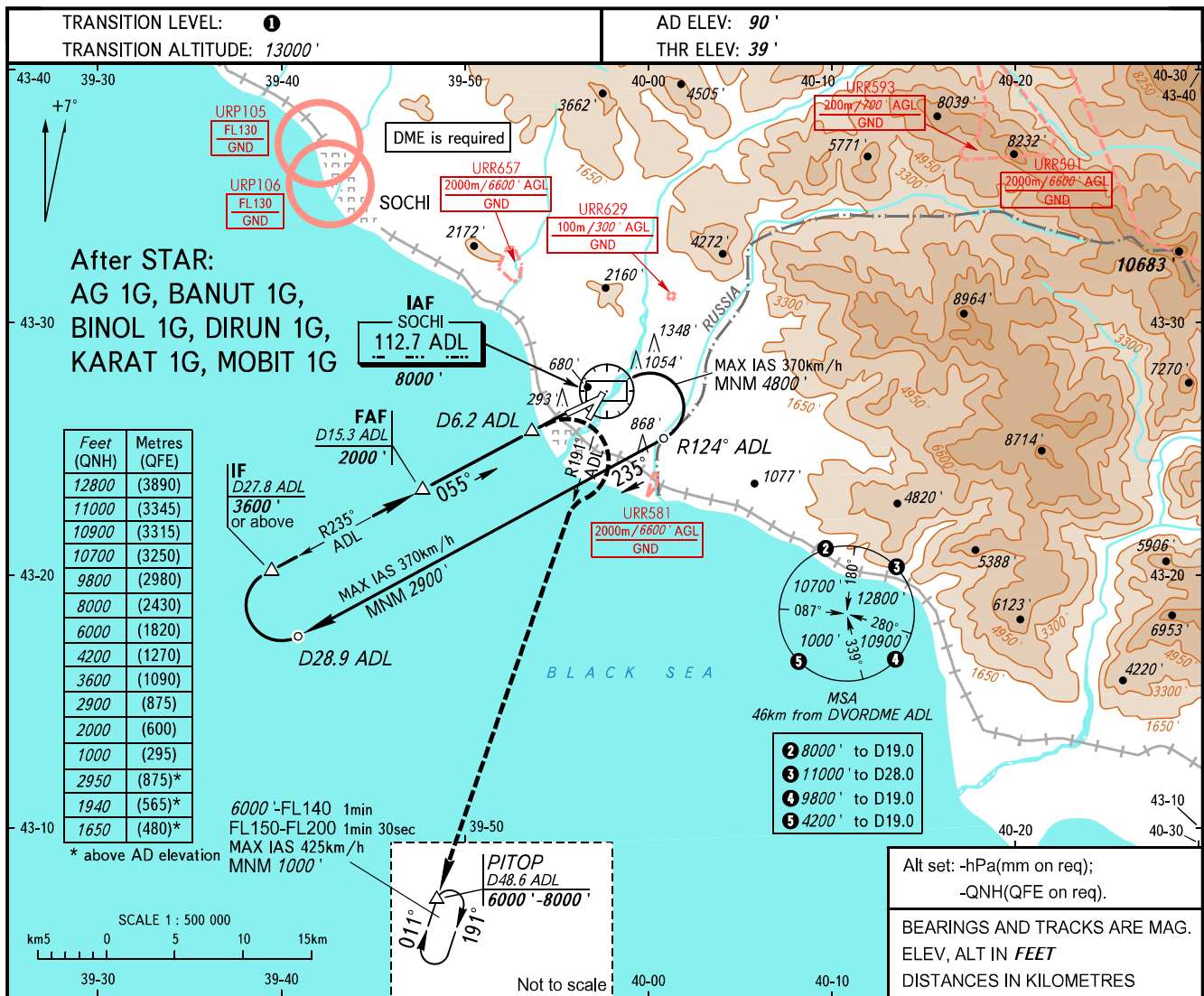


**INSTRUMENT
APPROACH
CHART - ICAO**

RADAR	119.700
TOWER	121.200

SOCHI, RUSSIA
SOCHI
DVOR Y RWY 06



After STAR:
AG 1G, BANUT 1G,
BINOL 1G, DIRUN 1G,
KARAT 1G, MOBIT 1G

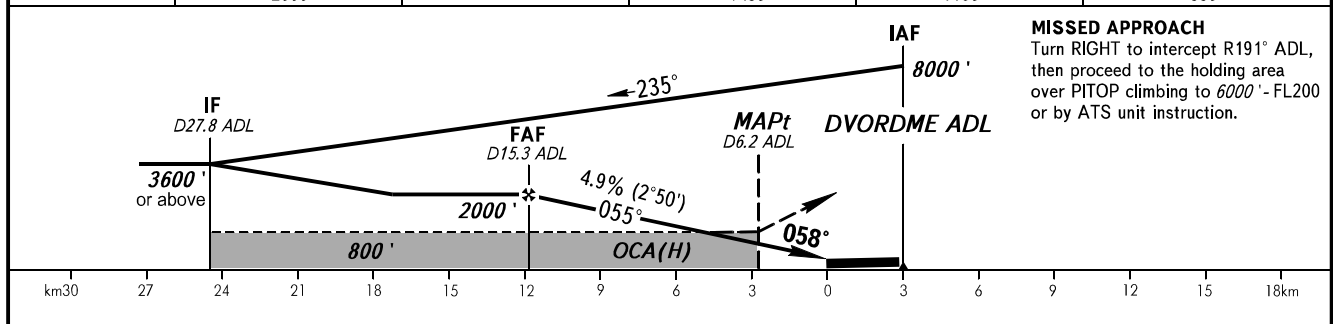
Feet (QNH)	Metres (QFE)
12800	(3890)
11000	(3345)
10900	(3315)
10700	(3250)
9800	(2980)
8000	(2430)
6000	(1820)
4200	(1270)
3600	(1090)
2900	(875)
2000	(600)
1000	(295)
2950	(875)*
1940	(565)*
1650	(480)*

* above AD elevation

Alt set: -hPa(mm on req);
-QNH(QFE on req).

BEARINGS AND TRACKS ARE MAG.
ELEV, ALT IN FEET
DISTANCES IN KILOMETRES

DME ADL	15.3	14.0	12.0	10.0	8.0
ALTITUDE	2000'	1800'	1480'	1150'	830'



MISSED APPROACH
Turn RIGHT to intercept R191° ADL,
then proceed to the holding area
over PITOP climbing to 6000' - FL200
or by ATS unit instruction.

OCA(H)		A	B	C	D						
Straight-in Approach	MNM climb gradient for missed APCH	2.5%	740' (700')	760' (720')	780' (740')	800' (760')					
		3.8%	580' (540')	620' (590')	650' (620')	680' (650')					
Circling		1650' (1560')	1940' (1850')	2950' (2860')	2950' (2860')						
GROUND SPEED		km/h	150	180	210	240	270	300	330	360	390
RATE OF DESCENT		m/s	2.0	2.5	2.9	3.3	3.7	4.1	4.5	4.9	5.3
		ft/min	402	482	563	643	723	804	884	965	1045

1 TRANSITION LEVEL:
- FL140 when QNH is 1013 hPa (760mm mercury column) or above;
- FL150 when QNH is 977 hPa (733mm mercury column) or above, but less than 1013 hPa (760mm mercury column);
- FL160 when QNH is less than 977 hPa (733mm mercury column).

WARNING:
1. Heavy turbulence with down-draughts is expected on final.
2. Final approach track is offset by 3° from RCL.