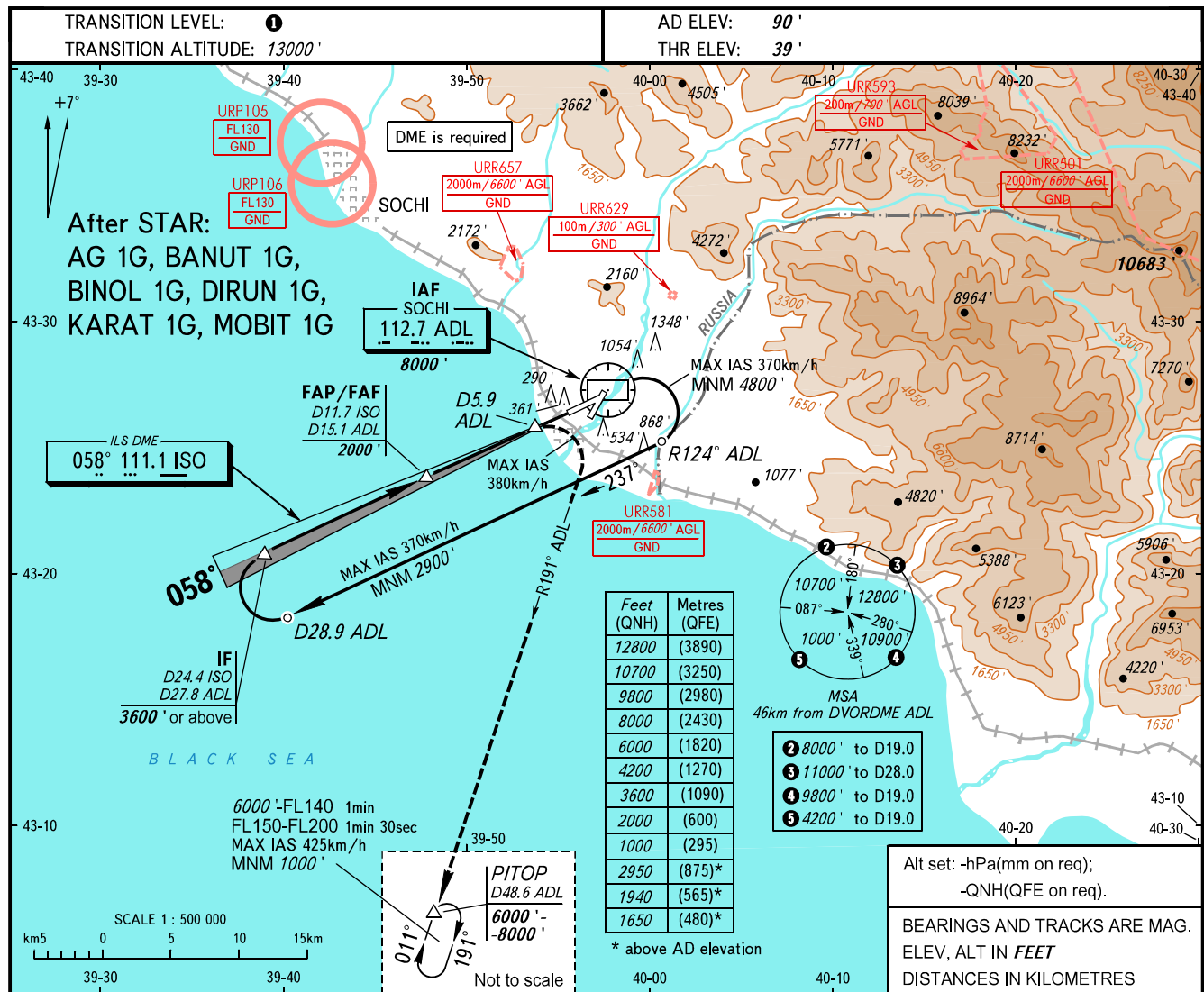


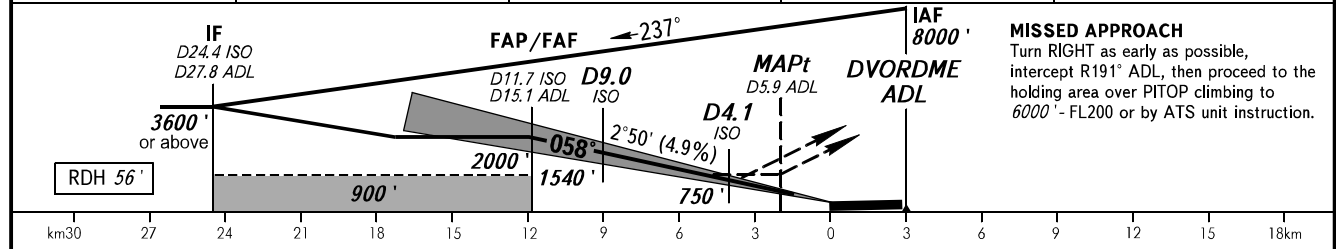
**INSTRUMENT
APPROACH
CHART - ICAO**

RADAR	119.700
TOWER	121.200

SOCHI, RUSSIA
SOCHI
ILS Y, LOC Y RWY 06



DME ISO	11.7	10.0	8.0	6.0
ALTITUDE	2000'	1720'	1390'	1070'



OCA(H)		A	B	C	D						
Straight-in Approach	MNM climb gradient for missed APCH	2.5%	650' (611')	677' (638')	685' (646')	695' (656')					
		3.0%	635' (596')	649' (610')	658' (619')	666' (627')					
		4.0%	614' (575')	628' (589')	634' (595')	645' (606')					
		5.0%	589' (550')	609' (570')	618' (579')	628' (589')					
		LOC	2.5%	660' (620')	660' (620')	820' (780')	820' (780')				
	5.0%	590' (550')	590' (550')	680' (640')	680' (640')						
Circling		1650' (1560')	1940' (1850')	2950' (2860')	2950' (2860')						
GROUND SPEED		km/h	150	180	210	240	270	300	330	360	390
RATE OF DESCENT		m/s	2.0	2.5	2.9	3.3	3.7	4.1	4.5	4.9	5.3
		ft/min	402	482	563	643	723	804	884	965	1045

TRANSITION LEVEL:
- FL140 when QNH is 1013 hPa (760mm mercury column) or above;
- FL150 when QNH is 977 hPa (733mm mercury column) or above, but less than 1013 hPa (760mm mercury column);
- FL160 when QNH is less than 977 hPa (733mm mercury column).

WARNING:
1. Heavy turbulence with down-draughts is expected on final.
2. ILS DME ISO reads zero at RWY 06 THR.

CHANGE: New chart