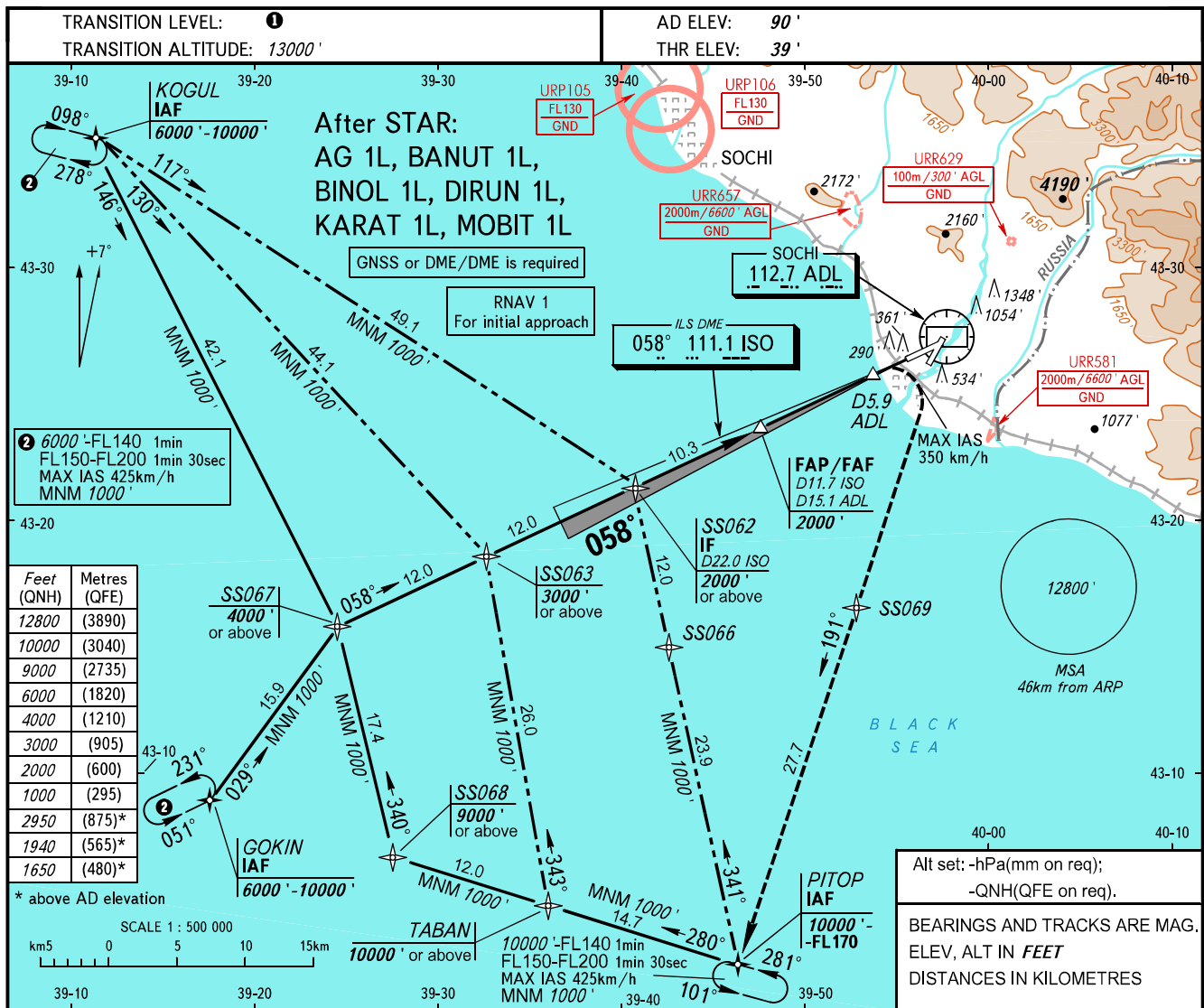


**INSTRUMENT
APPROACH
CHART - ICAO**

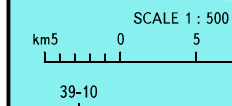
RADAR	119.700
TOWER	121.200

SOCHI, RUSSIA
SOCHI
ILS Z, LOC Z RWY 06

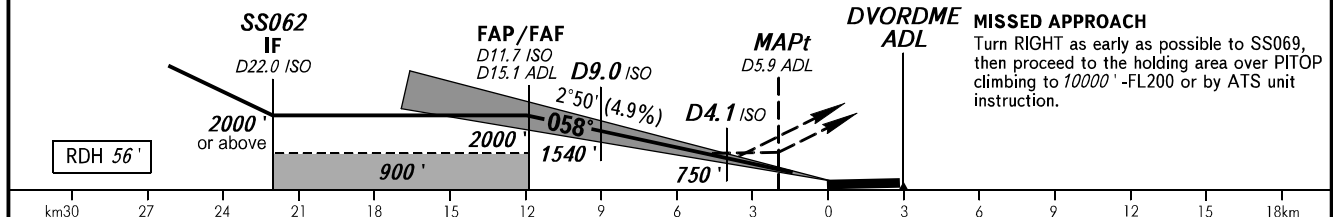


Feet (QNH)	Metres (QFE)
12800	(3890)
10000	(3040)
9000	(2735)
6000	(1820)
4000	(1210)
3000	(905)
2000	(600)
1000	(295)
2950	(875)*
1940	(565)*
1650	(480)*

* above AD elevation



DME ISO	11.7	10.0	8.0	6.0
ALTITUDE	2000'	1720'	1390'	1070'



OCA(H)		A	B	C	D	
Straight-in Approach	LOC	2.5%	650' (611')	677' (638')	685' (646')	695' (656')
		3.0%	635' (596')	649' (610')	658' (619')	666' (627')
		4.0%	614' (575')	628' (589')	634' (595')	645' (606')
		5.0%	589' (550')	609' (570')	618' (579')	628' (589')
		5.0%	590' (550')	590' (550')	680' (640')	680' (640')
Circling		1650' (1560')	1940' (1850')	2950' (2860')	2950' (2860')	

1 TRANSITION LEVEL:
 - FL140 when QNH is 1013 hPa (760mm mercury column) or above;
 - FL150 when QNH is 977 hPa (733mm mercury column) or above, but less than 1013 hPa (760mm mercury column);
 - FL160 when QNH is less than 977 hPa (733mm mercury column).

WARNING:
 1. Heavy turbulence with down-draughts is expected on final.
 2. ILS DME ISO reads zero at RWY 06 THR.

GROUND SPEED	km/h	150	180	210	240	270	300	330	360	390
	m/s	2.0	2.5	2.9	3.3	3.7	4.1	4.5	4.9	5.3
RATE OF DESCENT	ft/min	402	482	563	643	723	804	884	965	1045