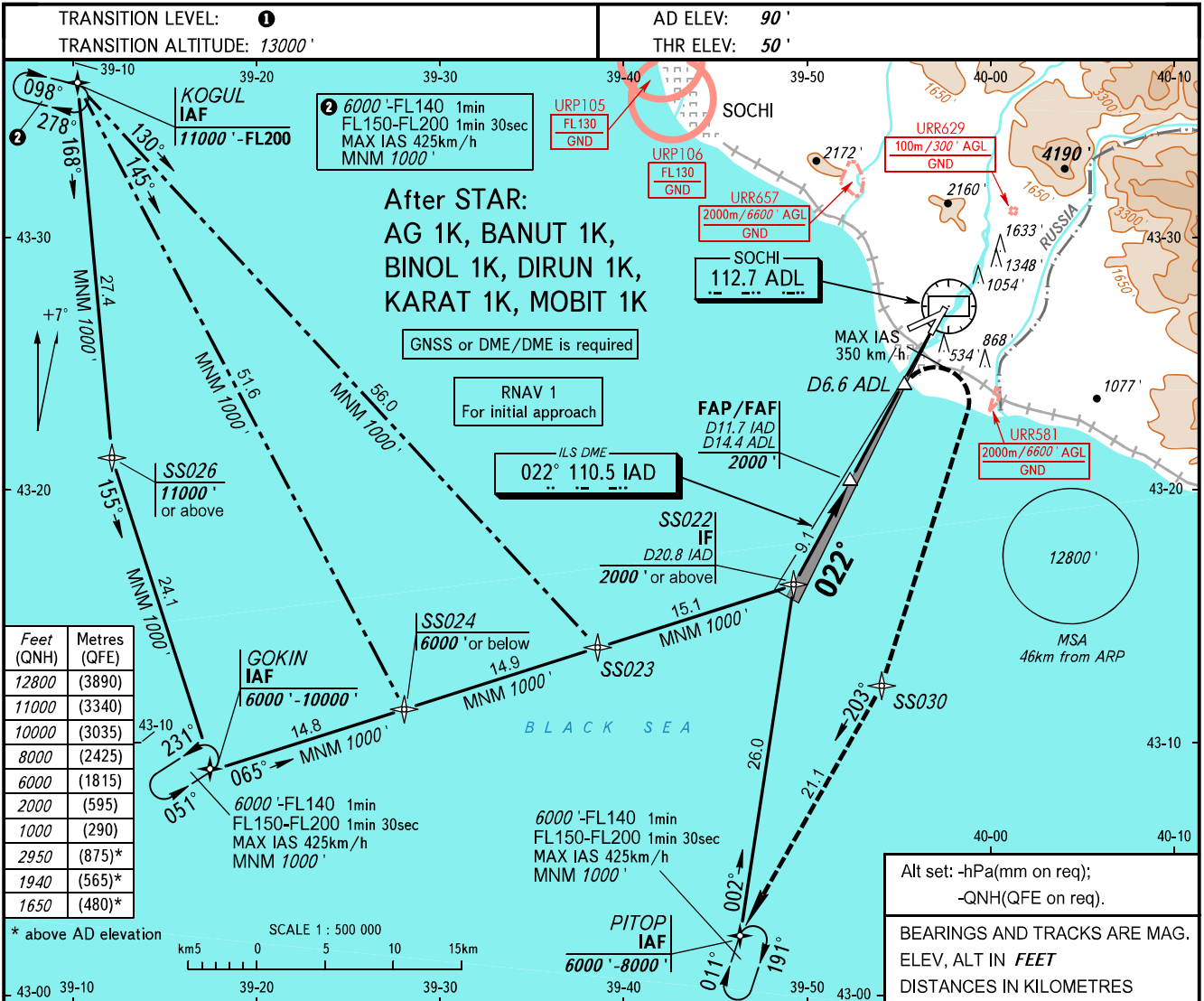


**INSTRUMENT
APPROACH
CHART - ICAO**

RADAR	119.700
TOWER	135.800

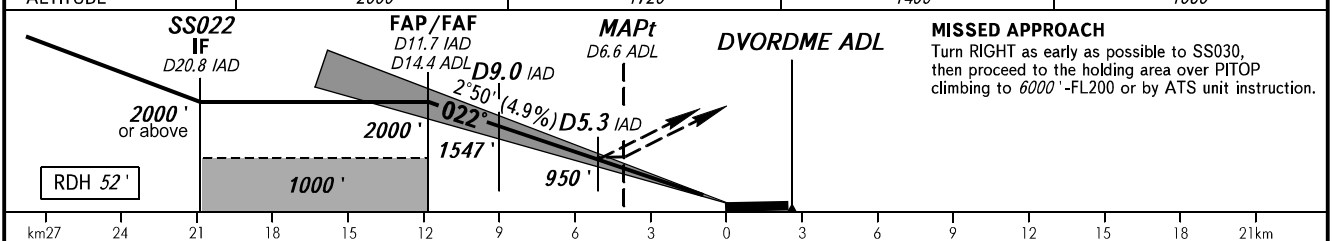
SOCHI, RUSSIA
SOCHI
ILS Z, LOC Z RWY 02



Alt set: -hPa(mm on req);
-QNH(QFE on req).

BEARINGS AND TRACKS ARE MAG.
ELEV, ALT IN FEET
DISTANCES IN KILOMETRES

DME IAD	11.7	10.0	8.0	6.0
ALTITUDE	2000'	1720'	1400'	1080'



		OCA(H)	A	B	C	D					
Straight-in Approach	MNM climb gradient for missed APCH	2.5%	781' (731')	930' (880')	939' (889')	949' (899')	1 TRANSITION LEVEL: - FL140 when QNH is 1013 hPa (760mm mercury column) or above; - FL150 when QNH is 977 hPa (733mm mercury column) or above, but less than 1013 hPa (760mm mercury column); - FL160 when QNH is less than 977 hPa (733mm mercury column). WARNING: 1. Heavy turbulence with down-draughts is expected on final. 2. ILS DME IAD reads zero at RWY 02 THR.				
		3.0%	769' (719')	874' (824')	882' (832')	893' (843')					
		4.0%	728' (648')	773' (723')	782' (732')	792' (742')					
		5.0%	695' (645')	706' (656')	715' (665')	725' (675')					
		LOC	2.5%	990' (940')	990' (940')	1020' (970')		1020' (970')			
	5.0%		780' (730')	780' (730')	840' (790')	840' (790')					
Circling			1650' (1560')	1940' (1850')	2950' (2860')	2950' (2860')					
GROUND SPEED		km/h	150	180	210	240	270	300	330	360	390
RATE OF DESCENT		m/s	2.0	2.5	2.9	3.3	3.7	4.1	4.5	4.9	5.3
		ft/min	402	482	563	643	723	804	884	965	1045

CHANGE: New chart