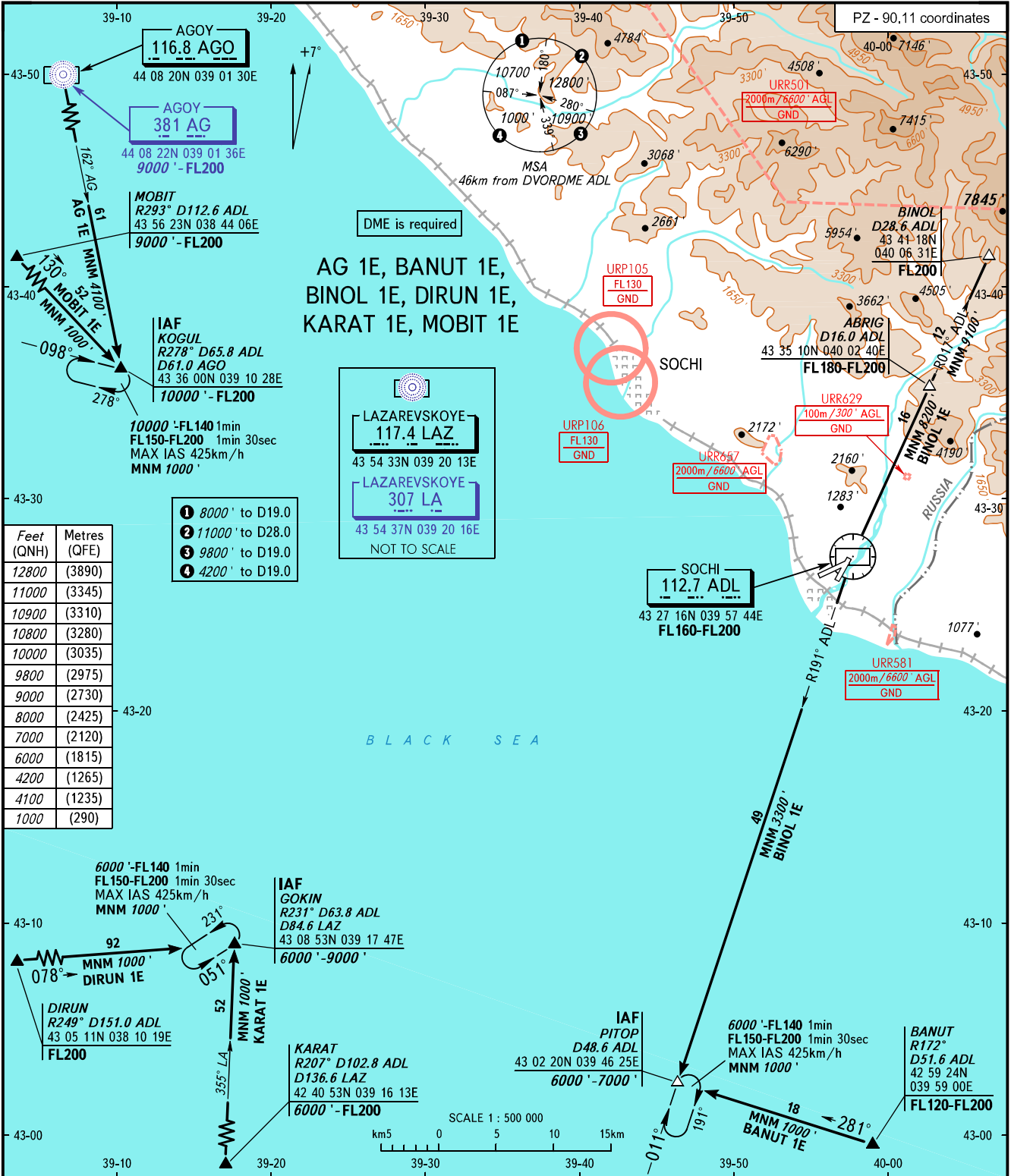


STANDARD ARRIVAL CHART
INSTRUMENT (STAR) - ICAO

SOCHI, RUSSIA
SOCHI
RWY 02

TRANSITION
LEVEL : 5



APPROACH	124.600
RADAR	119.700
TOWER	135.800

5 TRANSITION LEVEL:
 - FL140 when QNH is 1013 hPa (760mm mercury column) or above;
 - FL150 when QNH is 977 hPa (733mm mercury column) or above, but less than 1013 hPa (760mm mercury column);
 - FL160 when QNH is less than 977 hPa (733mm mercury column).

BEARINGS AND TRACKS ARE MAGNETIC
ALTITUDES AND ELEVATIONS IN FEET
DISTANCES IN KILOMETRES

Alt set; -QNH(QFE on req);
-hPa(mm on req).