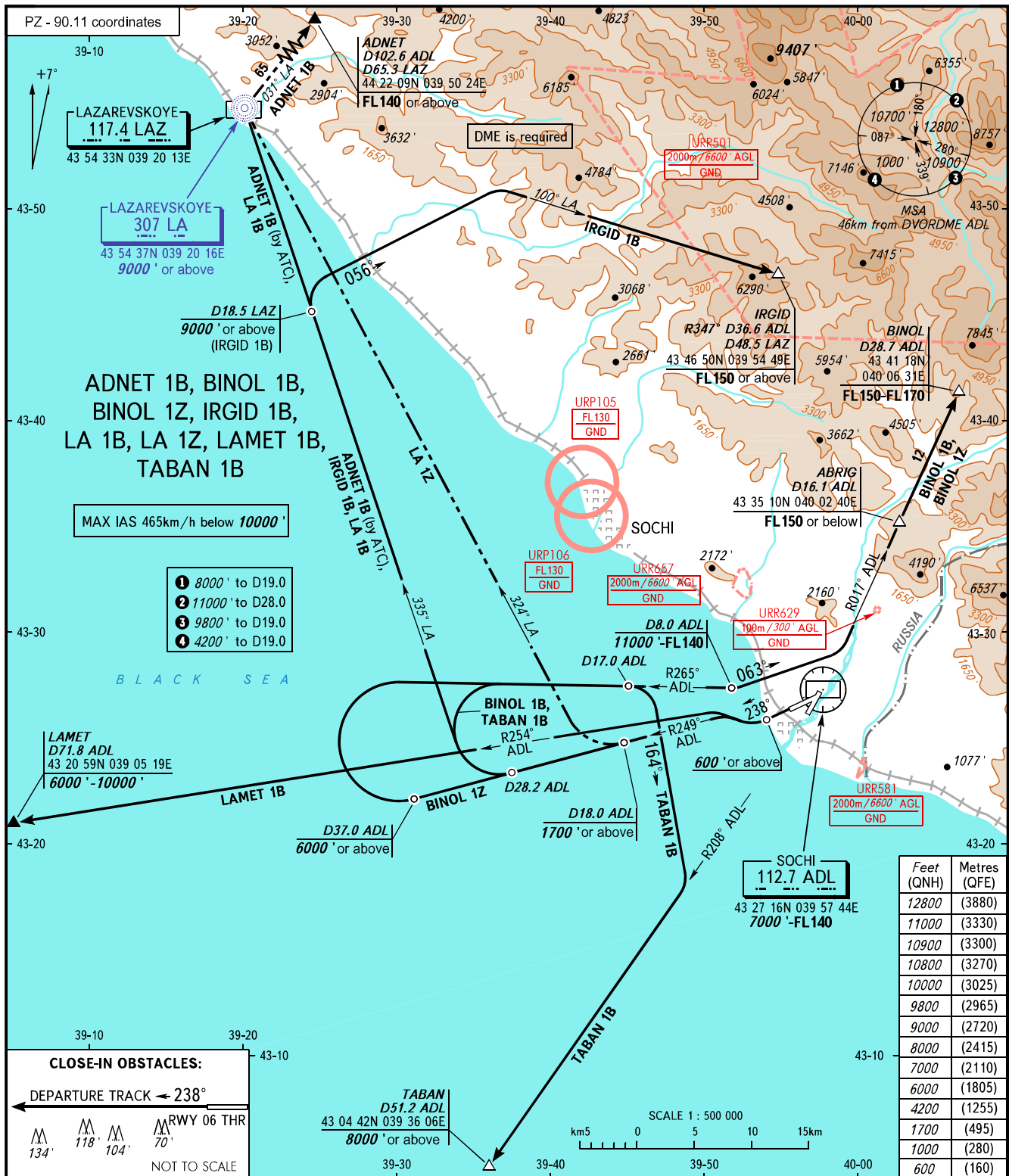


STANDARD DEPARTURE CHART
INSTRUMENT (SID) - ICAO

TRANSITION
ALTITUDE: 13000'

SOCHI, RUSSIA
SOCHI
RWY 24



TOWER 121.200
RADAR 119.700
APPROACH 124.600

- WARNING:**
- Take-off shall be executed in accordance with noise abatement procedures as set in Aeroplane Flight Manual.
 - MNM climb gradient due to the airspace structure:
 - 3.4% up to 9000' for LA 1Z;
 - 4.6% up to FL150 for IRGID 1B;
 - 5.4% up to 11000' for BINOL 1Z;
 - 5.5% up to 11000' for BINOL 1B.

BEARINGS AND TRACKS ARE MAGNETIC
ALTITUDES AND ELEVATIONS IN FEET
DISTANCES IN KILOMETRES

Alt set: -QNH(QFE on req);
-hPa(mm on req).