

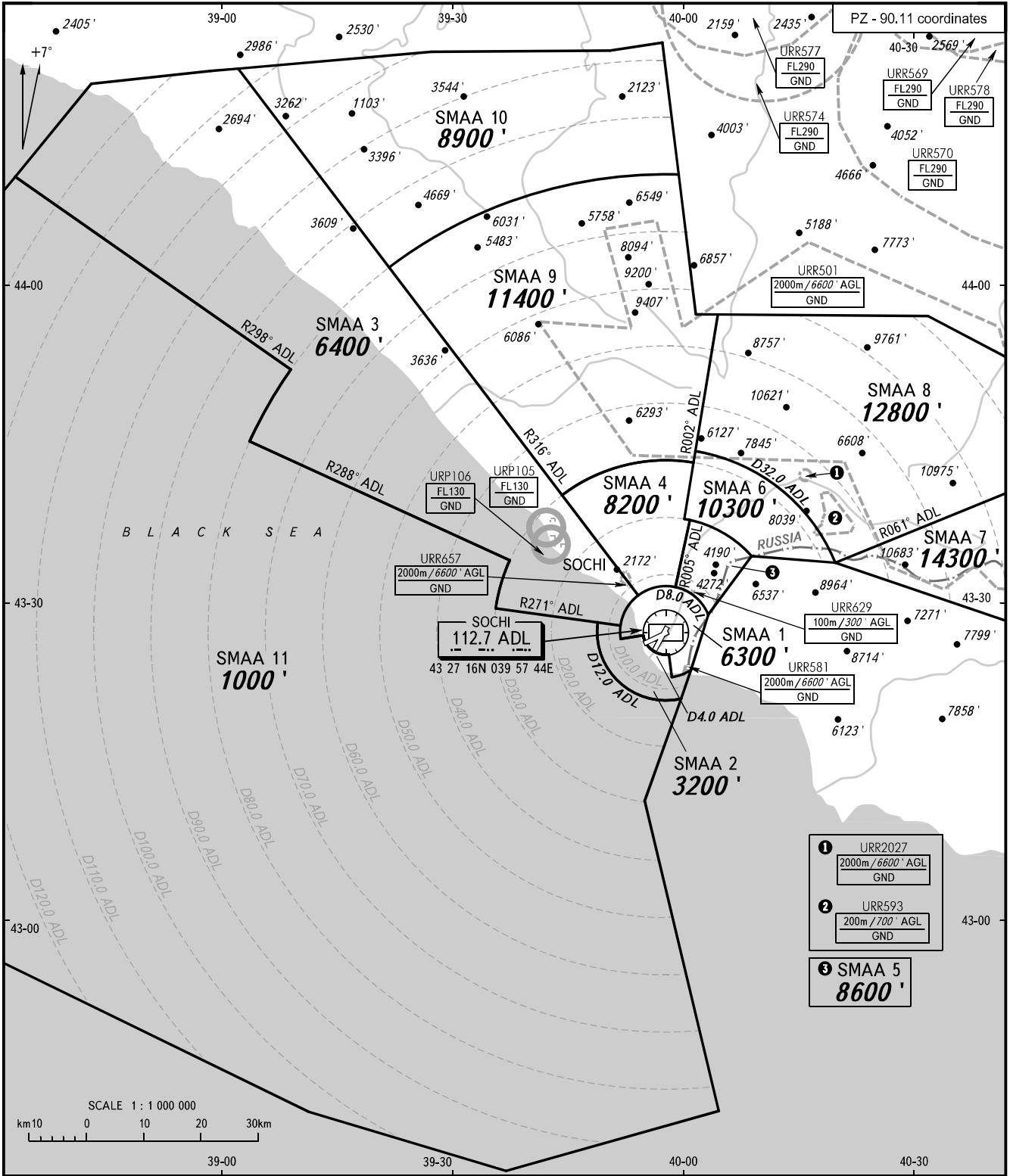
ATC SURVEILLANCE MINIMUM  
ALTITUDE CHART - ICAO

SOCHI, RUSSIA

SOCHI

ELEV  
**90'**

TRANSITION ALTITUDE: **13000'**



APPROACH **124.600**  
 RADAR **119.700**  
 TOWER **121.200** 06/24  
 TOWER **135.800** 02/20

**WARNING:**

- The chart may only be used for cross-checking of altitudes assigned while the aircraft is identified under radar control.
- When vectoring is carried out under low-temperature conditions, minimum vectoring altitudes for IFR flight must be corrected by altimeter temperature correction.

BEARINGS AND TRACKS ARE MAGNETIC  
 ALTITUDES AND ELEVATIONS IN **FEET**  
 DISTANCES IN KILOMETRES

Alt set: -QNH(QFE on req);  
 -hPa(mm on req).

CHANGE: New chart

<b>SURVEILLANCE MINIMUM ALTITUDE AREAS</b>		
<b>IDENT</b>	<b>MNM ALT</b>	<b>LATERAL LIMITS (PZ-90.11 coordinates)</b>
SMAA 1	6300 ft	432852.72N 0400313.86E, 432339.50N 0400058.98E, then clockwise by arc of a circle radius of 8 km centred at 432716.10N 0395743.60E to 432259.15N 0395830.57E, then along the state border to 432507.60N 0395807.10E, then clockwise by arc of a circle radius of 4 km centred at 432716.10N 0395743.60E to 432655.89N 0395447.87E, 432635.60N 0395152.17E, then clockwise by arc of a circle radius of 8 km centred at 432716.10N 0395743.60E to 432852.72N 0400313.86E.
SMAA 2	3200 ft	432751.33N 0395151.04E, 432808.87N 0394854.72E, then anticlockwise by arc of a circle radius of 12 km centred at 432716.10N 0395743.60E to 432057.12N 0395942.93E, 432339.50N 0400058.98E, then clockwise by arc of a circle radius of 8 km centred at 432716.10N 0395743.60E to 432259.15N 0395830.57E, 432507.62N 0395807.10E, then clockwise by arc of a circle radius of 4 km centred at 432716.10N 0395743.60E to 432655.89N 0395447.87E, 432635.60N 0395152.17E, then clockwise by arc of a circle radius of 8 km centred at 432716.10N 0395743.60E to 432751.33N 0395151.04E.
SMAA 3	6400 ft	433359.33N 0393728.33E, then anticlockwise by arc of a circle radius of 30 km centred at 432716.10N 0395743.60E to 432926.67N 0393540.93E, 432751.33N 0395151.04E, then clockwise by arc of a circle radius of 8 km centred at 432716.10N 0395743.60E to 433042.57N 0395408.35E, 442014.33N 0390130.41E, 441959.00N 0385754.00E, 441838.00N 0384214.00E, 440943.89N 0383226.55E, 435152.47N 0390848.88E, then anticlockwise by arc of a circle radius of 80 km centred at 432716.10N 0395743.60E to 434503.34N 0390332.90E, 433359.33N 0393728.33E.
SMAA 4	8200 ft	434009.77N 0394414.32E, 433042.57N 0395408.35E, then clockwise by arc of a circle radius of 8 km centred at 432716.10N 0395743.60E to 433129.48N 0395858.74E, 433749.53N 0400051.77E, then anticlockwise by arc of a circle radius of 20 km centred at 432716.10N 0395743.60E to 433755.58N 0400007.97E, 434315.30N 0400120.42E, then anticlockwise by arc of a circle radius of 30 km centred at 432716.10N 0395743.60E to 434009.77N 0394414.32E.
SMAA 5	8600 ft	433423.93N 0400852.42E, then anticlockwise by arc of a circle radius of 20 km centred at 432716.10N 0395743.60E to 433749.53N 0400051.77E, 433129.48N 0395858.74E then clockwise by arc of a circle radius of 8 km centred at 432716.10N 0395743.60E to 432852.72N 0400313.86E, then along the state border to 433423.93N 0400852.42E.
SMAA 6	10300 ft	434419.24N 0400134.95E, 433755.58N 0400007.94E, then clockwise by arc of a circle radius of 20 km centred at 432716.10N 0395743.60E to 433423.93N 0400852.42E, then along the state border to 433345.20N 0401944.08E, then anticlockwise by arc of a circle radius of 32 km centred at 432716.10N 0395743.60E to 434419.27N 0400134.95E.
SMAA 7	14300 ft	433345.20N 0401944.08E, then along the state border to 432259.98N 0410148.93E, 432412.00N 0410854.00E, 434330.22N 0405326.29E, 433345.20N 0401944.08E.
SMAA 8	12800 ft	433345.20N 0401944.08E, 434330.22N 0405326.30E, 434900.00N 0404900.00E, 435253.00N 0404237.00E, 435700.00N 0403200.00E, 435713.93N 0400431.61E, 434419.24N 0400134.95E, then clockwise by arc of a circle radius of 32 km centred at 432716.10N 0395743.60E to 433345.20N 0401944.08E.
SMAA 9	11400 ft	440135.59N 0392132.61E, 434009.77N 0394414.32E, then clockwise by arc of a circle radius of 30 km centred at 432716.10N 0395743.60E to 434315.30N 0400120.42E, 435713.93N 0400431.61E, 435715.00N 0400140.00E, 441027.10N 0395925.72E, then anticlockwise by arc of a circle radius of 80 km centred at 432716.10N 0395743.60E to 440135.59N 0392132.61E.
SMAA 10	8900 ft	441027.10N 0395925.72E, 442255.00N 0395718.00E, 442209.00N 0395024.00E, 442159.00N 0392654.00E, 442014.33N 0390130.41E, 440135.59N 0392132.61E, then clockwise by arc of a circle radius of 80 km centred at 432716.10N 0395743.60E to 441027.10N 0395925.72E.
SMAA 11	1000 ft	434503.34N 0390332.90E, then clockwise by arc of a circle radius of 80 km centred at 432716.10N 0395743.60E to 435152.47N 0390848.88E, 440943.89N 0383226.55E, 440217.00N 0382418.00E, 435353.00N 0381654.00E, 433048.00N 0380500.00E, 430511.00N 0381019.00E, 430230.00N 0381200.00E, 424146.00N 0391201.00E, 423619.00N 0393718.00E, 424200.00N 0400430.00E, 431118.00N 0395500.00E, 432057.12N 0395942.93E, then clockwise by arc of a circle radius of 12 km centred at 432716.10N 0395743.60E to 432808.84N 0394854.72E, 432926.67N 0393540.93E, then clockwise by arc of a circle radius of 30 km centred at 432716.10N 0395743.60E to 433359.33N 0393728.33E, 434503.34N 0390332.90E.