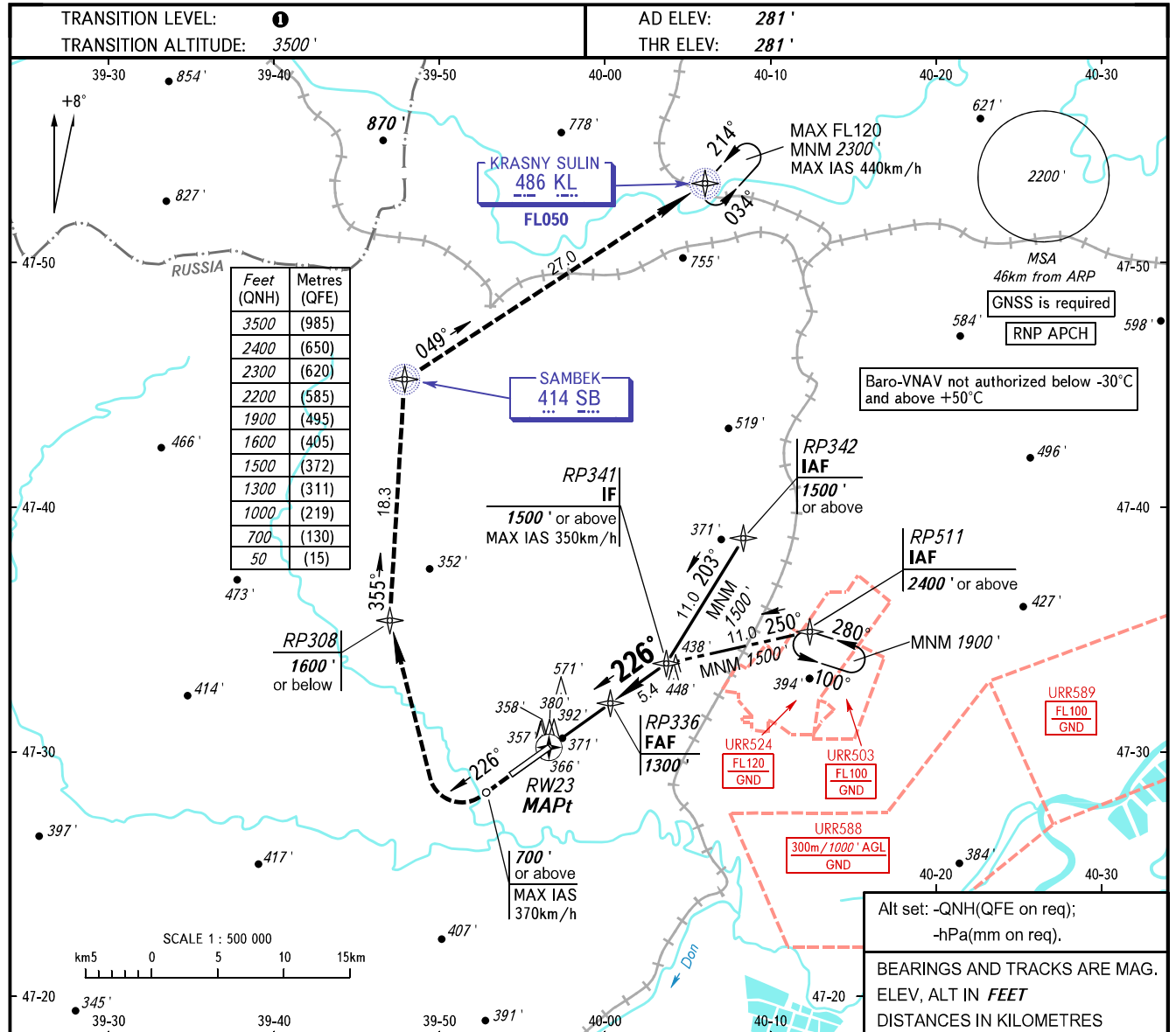


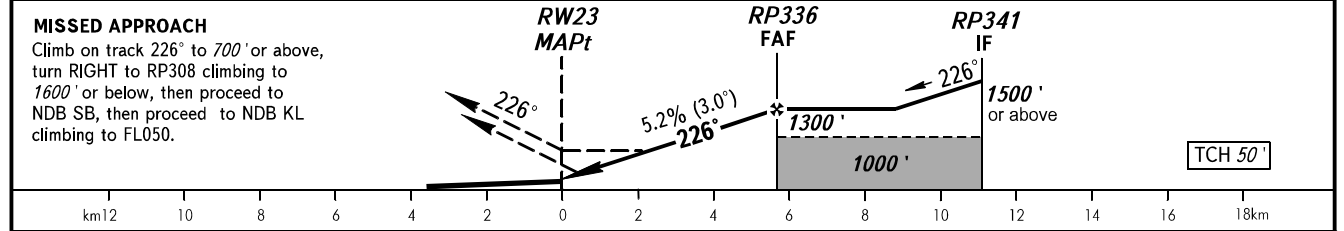
**INSTRUMENT
APPROACH
CHART - ICAO**

PLATOV RADAR 121.200
PLATOV TOWER 119.700

**ROSTOV-NA-DONU, RUSSIA
PLATOV
RNP RWY 23**



DIST to RW23	2.0	4.0	5.6
ALTITUDE	670'	1015'	1300'



OCA(H)		A	B	C	D					
Straight-in Approach	LNAV	640' (360')	640' (360')	640' (360')	640' (360')					
	LNAV/VNAV	578' (297')	588' (307')	602' (321')	605' (324')					
Circling		690' (410')	870' (590')	970' (690')	980' (690')					
GROUND SPEED	km/h	150	180	210	240	270	300	330	360	390
RATE OF DESCENT	m/s	2.2	2.6	3.0	3.5	3.9	4.3	4.8	5.2	5.6
	ft/min	427	512	597	682	768	853	938	1024	1109

① **TRANSITION LEVEL:**
- FL050 when QNH is 996 hPa (747mm mercury column) or above;
- FL060 when QNH is 960 hPa (720mm mercury column) or above, but less than 996 hPa (747mm mercury column).

NOTE:
1. Hold over IAF RP511 is AVBL by ATC.
2. MAPt at RW23. Timing not authorized for defining MAPt.