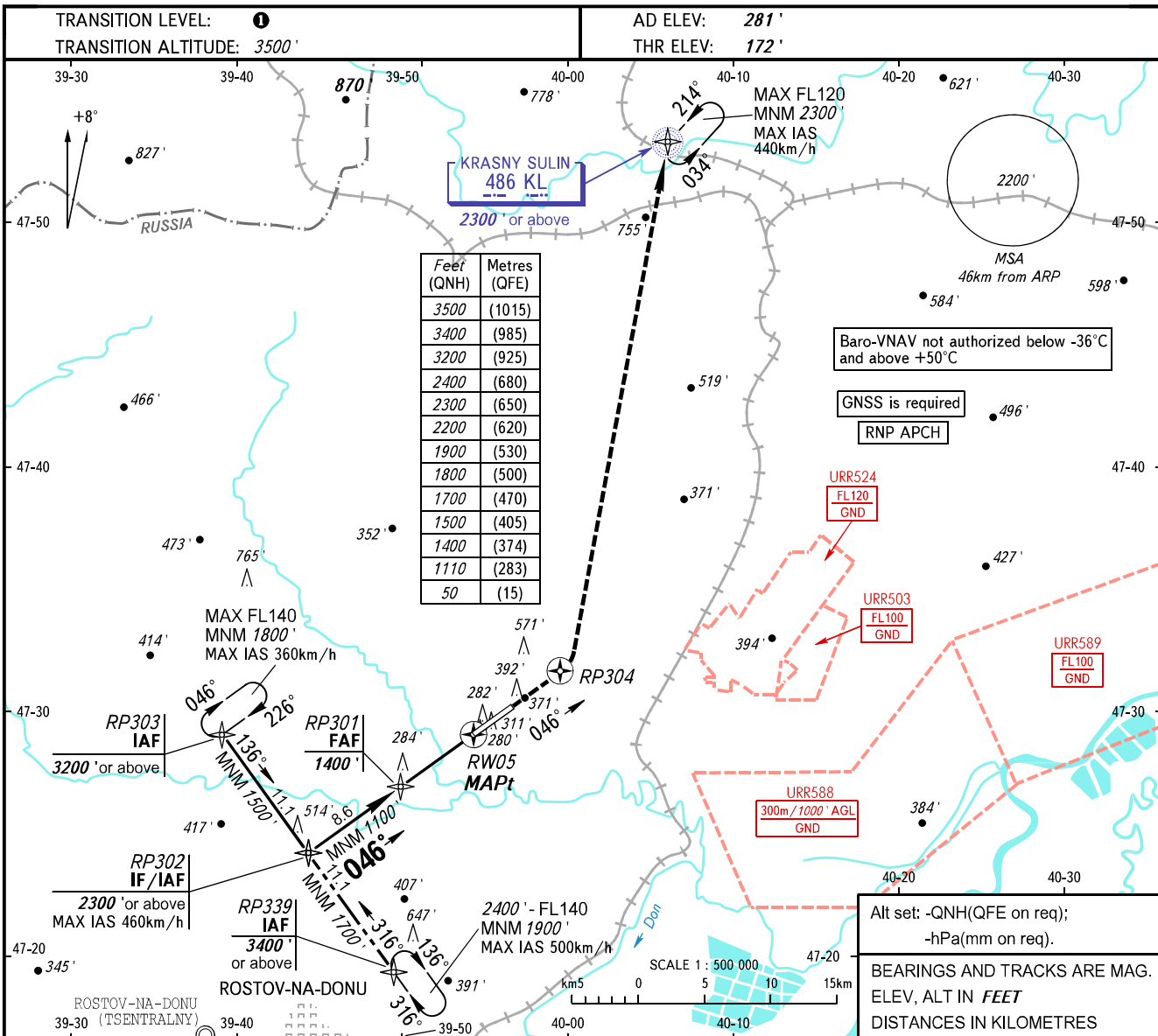


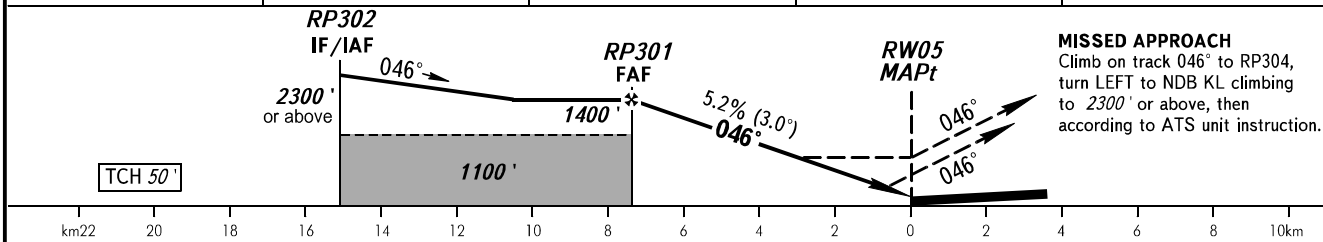
**INSTRUMENT  
APPROACH  
CHART - ICAO**

PLATOV RADAR 121.200  
PLATOV TOWER 119.700

**ROSTOV-NA-DONU, RUSSIA  
PLATOV  
RNP RWY 05**



DIST to RW05	7.0	6.0	4.0	2.0
ALTITUDE	1400'	1245'	905'	565'



OCA(H)		A	B	C	D					
Straight-in Approach	LNAV	530' (360')	530' (360')	530' (360')	530' (360')					
	LNAV/VNAV	411' (239')	421' (249')	433' (261')	472' (300')					
Circling		690' (410')	870' (590')	970' (690')	980' (690')					
GROUND SPEED	km/h	150	180	210	240	270	300	330	360	390
RATE OF DESCENT	m/s	2.2	2.6	3.0	3.5	3.9	4.3	4.8	5.2	5.6
	ft/min	427	512	597	682	768	853	938	1024	1109

NOTE:  
1. Hold over IAF RP339 is AVBL by ATC.  
2. MAPt at RW05. Timing not authorized for defining MAPt.

CHANGE: New chart