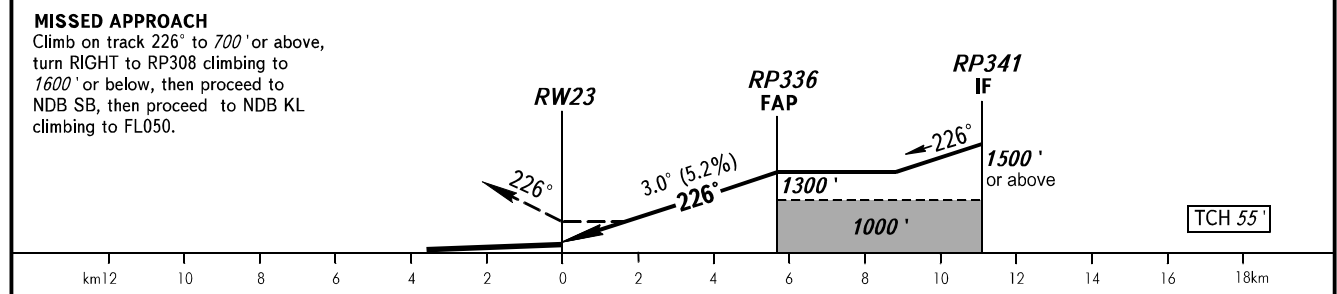
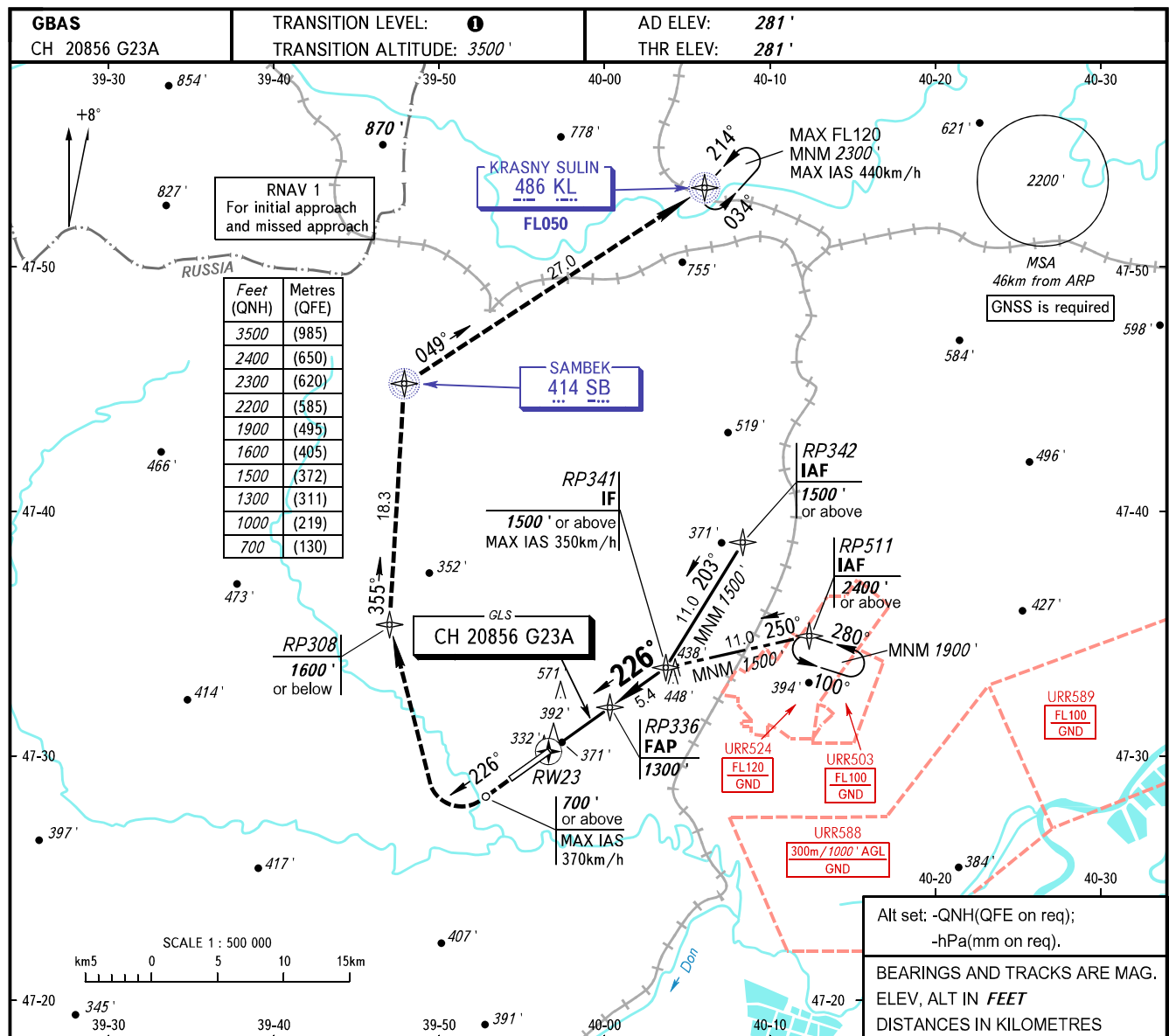


**INSTRUMENT
APPROACH
CHART - ICAO**

PLATOV RADAR 121.200
PLATOV TOWER 119.700

**ROSTOV-NA-DONU, RUSSIA
PLATOV
GLS RWY 23**



OCA(H)		A	B	C	D	D-widebody					
Straight-in Approach	CAT I	426' (144')	436' (154')	448' (166')	461' (179')	464' (182')					
Circling		690' (410')	870' (590')	970' (690')	980' (690')	980' (690')					
GROUND SPEED		km/h	150	180	210	240	270	300	330	360	390
RATE OF DESCENT		m/s	2.2	2.6	3.0	3.5	3.9	4.3	4.8	5.2	5.6
		ft/min	427	512	597	682	768	853	938	1024	1109

1 TRANSITION LEVEL:
- FL050 when QNH is 996 hPa (747mm mercury column) or above;
- FL060 when QNH is 960 hPa (720mm mercury column) or above, but less than 996 hPa (747mm mercury column).

NOTE
Hold over IAF RP511 is AVBL by ATC.

CHANGE: New chart