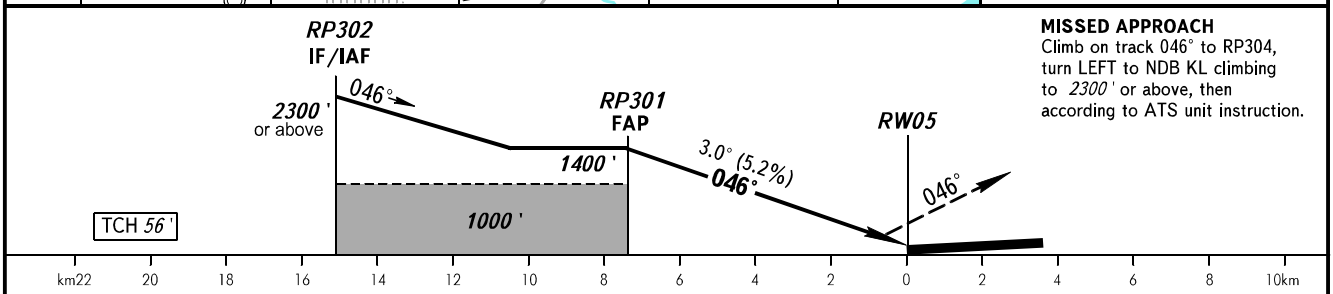
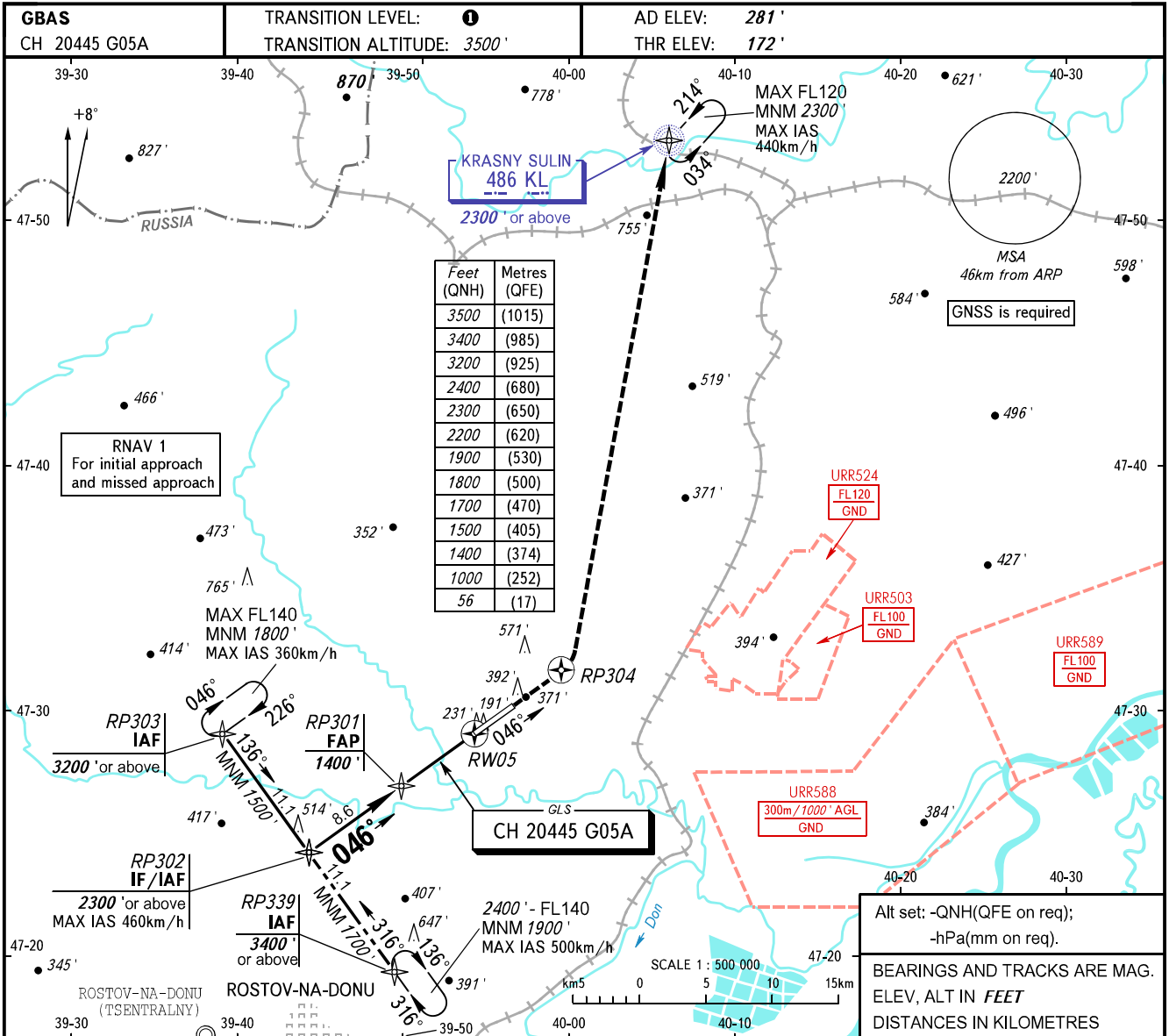


**INSTRUMENT
APPROACH
CHART - ICAO**

PLATOV RADAR 121.200
PLATOV TOWER 119.700

**ROSTOV-NA-DONU, RUSSIA
PLATOV
GLS RWY 05**



MISSED APPROACH
Climb on track 046° to RP304, turn LEFT to NDB KL climbing to 2300' or above, then according to ATS unit instruction.

OCA(H)	A	B	C	D	D-widebody
CAT I	324' (153')	335' (164')	348' (177')	363' (192')	365' (194')
Straight-in Approach					
Circling	690' (410')	870' (590')	970' (690')	980' (690')	980' (690')

1 TRANSITION LEVEL:
- FL050 when QNH is 996 hPa (747mm mercury column) or above;
- FL060 when QNH is 960 hPa (720mm mercury column) or above, but less than 996 hPa (747mm mercury column).

NOTE
Hold over IAF RP339 is AVBL by ATC.

GROUND SPEED	km/h									
	150	180	210	240	270	300	330	360	390	
RATE OF DESCENT	m/s									
	2.2	2.6	3.0	3.5	3.9	4.3	4.8	5.2	5.6	
RATE OF DESCENT	ft/min									
	427	512	597	682	768	853	938	1024	1109	

CHANGE: New chart