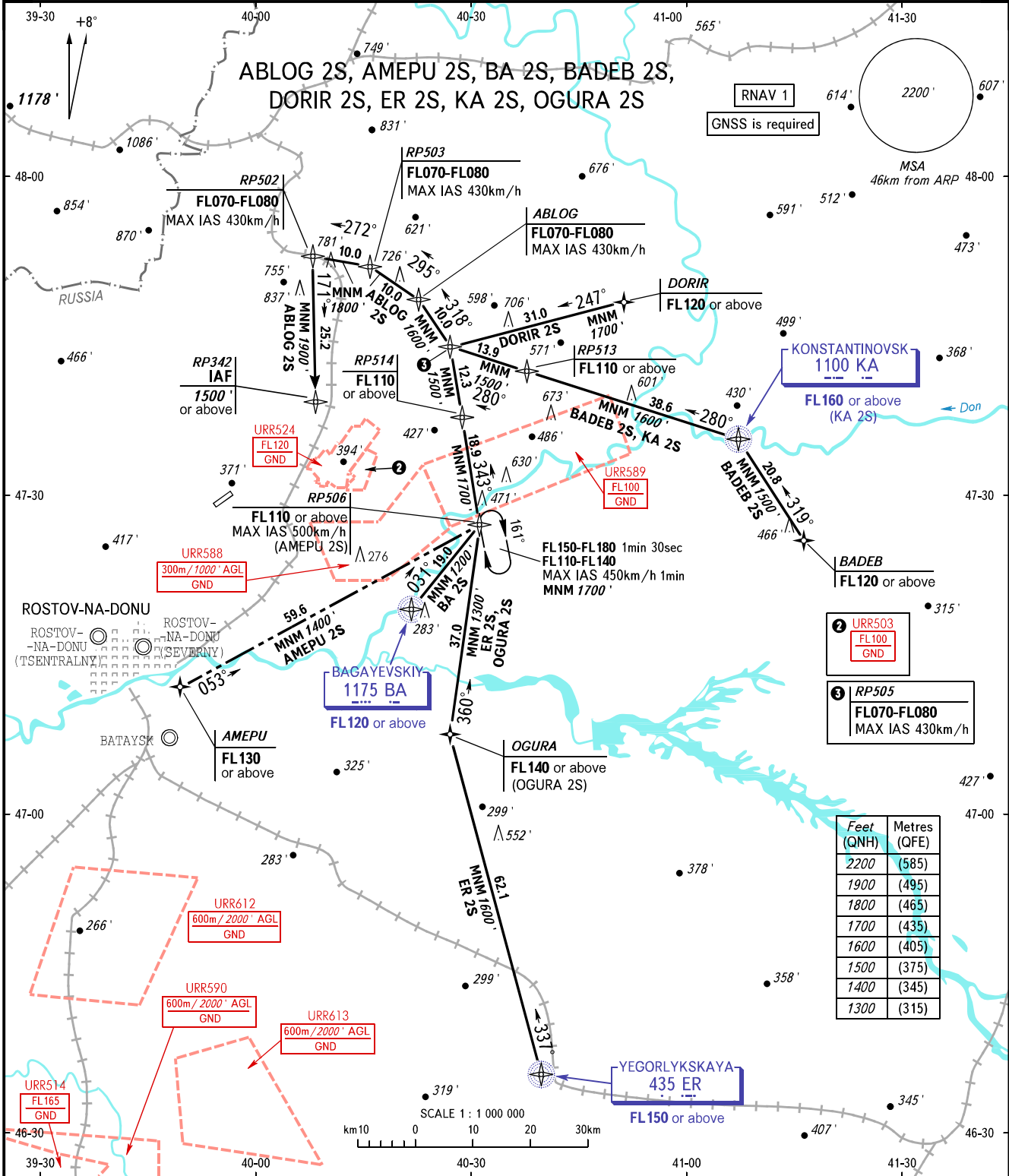


STANDARD ARRIVAL CHART
INSTRUMENT (STAR) - ICAO

ROSTOV-NA-DONU, RUSSIA
PLATOV
RNAV RWY 23

TRANSITION
LEVEL: ①



- ② URR503
FL100
GND
- ③ RP505
FL070-FL080
MAX IAS 430km/h

Feet (QNH)	Metres (QFE)
2200	(585)
1900	(495)
1800	(465)
1700	(435)
1600	(405)
1500	(375)
1400	(345)
1300	(315)

PLATOV RADAR 121.200
PLATOV TOWER 119.700

① TRANSITION LEVEL:
- FL050 when QNH is 996 hPa (747mm mercury column) or above;
- FL060 when QNH is 960 hPa (720mm mercury column) or above,
but less than 996 hPa (747mm mercury column).

WARNING
DORIR 2S is AVBL on SUN and HOL, other days - by ATC.

BEARINGS AND TRACKS ARE MAGNETIC
ALTITUDES AND ELEVATIONS IN FEET
DISTANCES IN KILOMETRES