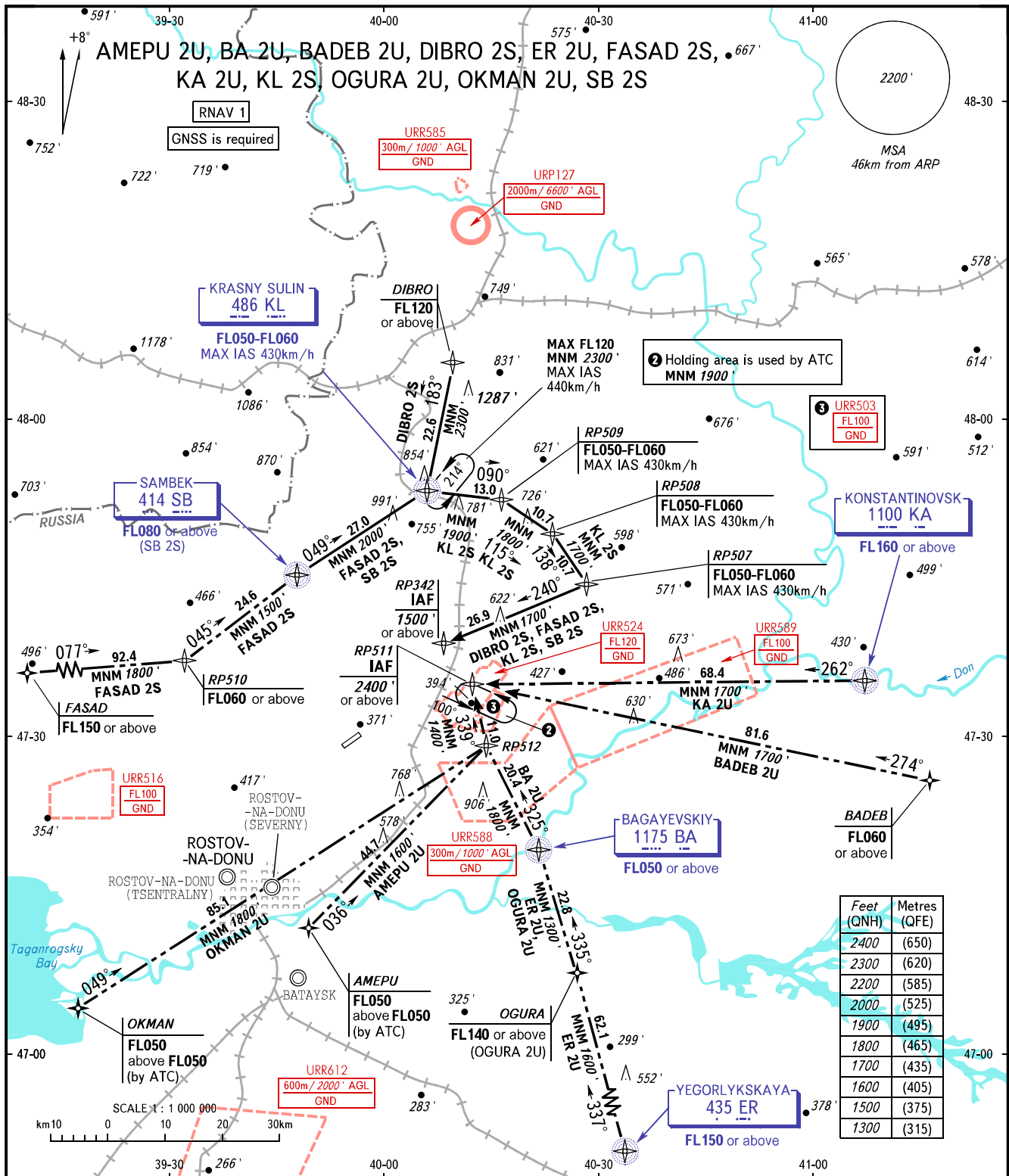


STANDARD ARRIVAL CHART
INSTRUMENT (STAR) - ICAO

ROSTOV-NA-DONU, RUSSIA
PLATOV
RNAV RWY 23

TRANSITION
LEVEL: ①



| Feet (QNH) | Metres (QFE) |
|------------|--------------|
| 2400 | (650) |
| 2300 | (620) |
| 2200 | (585) |
| 2000 | (525) |
| 1900 | (495) |
| 1800 | (465) |
| 1700 | (435) |
| 1600 | (405) |
| 1500 | (375) |
| 1300 | (315) |

① TRANSITION LEVEL:

- FLO50 when QNH is 996 hPa (747mm mercury column) or above;
- FLO60 when QNH is 960 hPa (720mm mercury column) or above, but less than 996 hPa (747mm mercury column).

WARNING:

- AMEPU 2U, BA 2U, ER 2U, OGURA 2U, OKMAN 2U are not AVBL, when URR503, URR524 are active.
- BADEB 2U, KA 2U are not AVBL, when URR503, URR524, URR589 are active.

BEARINGS AND TRACKS ARE MAGNETIC
ALTITUDES AND ELEVATIONS IN FEET
DISTANCES IN KILOMETRES