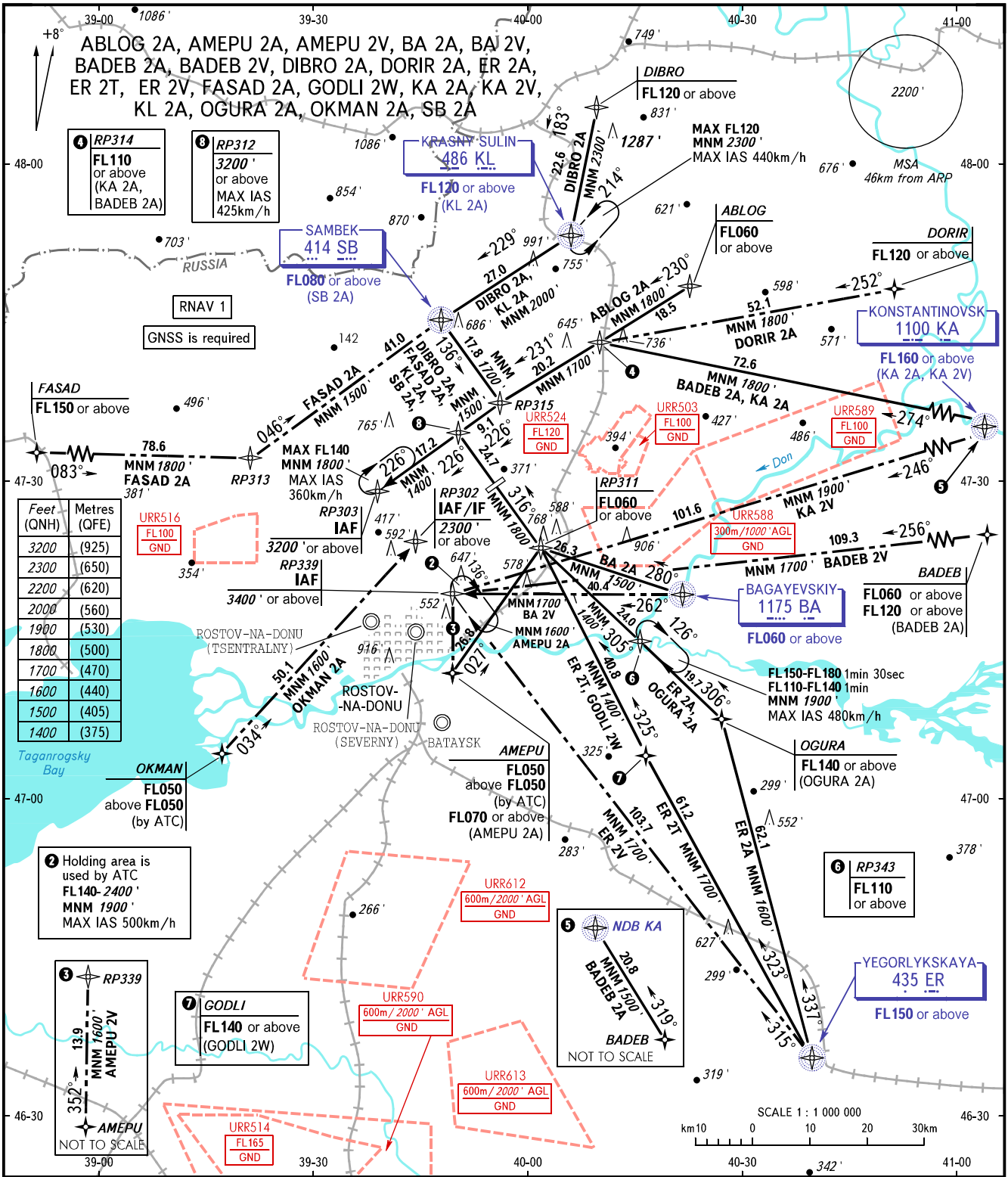


STANDARD ARRIVAL CHART  
INSTRUMENT (STAR) - ICAO

ROSTOV-NA-DONU, RUSSIA  
PLATOV  
RNAV RWY 05

TRANSITION  
LEVEL: 1



Feet (QNH)	Metres (QFE)
3200	(925)
2300	(650)
2200	(620)
2000	(560)
1900	(530)
1800	(500)
1700	(470)
1600	(440)
1500	(405)
1400	(375)

2 Holding area is used by ATC  
FL140-2400'  
MNM 1900'  
MAX IAS 500km/h

3 RP339  
13.9  
MNM 1600'  
AMEPU 2V  
AMEPU  
NOT TO SCALE

7 GODLI  
FL140 or above  
(GODLI 2W)

5 NDB KA  
20.8  
MNM 1200'  
BADEB 2A  
BADEB  
NOT TO SCALE

6 RP343  
FL110 or above

1 TRANSITION LEVEL:  
- FL050 when QNH is 996 hPa (747mm mercury column) or above;  
- FL060 when QNH is 960 hPa (720mm mercury column) or above, but less than 996 hPa (747mm mercury column).  
**WARNING:**  
1. KA 2V is not AVBL, when URR589 is active.  
2. DORIR 2A is AVBL on SUN and HOL, other days - by ATC.

BEARINGS AND TRACKS ARE MAGNETIC  
ALTITUDES AND ELEVATIONS IN FEET  
DISTANCES IN KILOMETRES

CHANGE: New chart