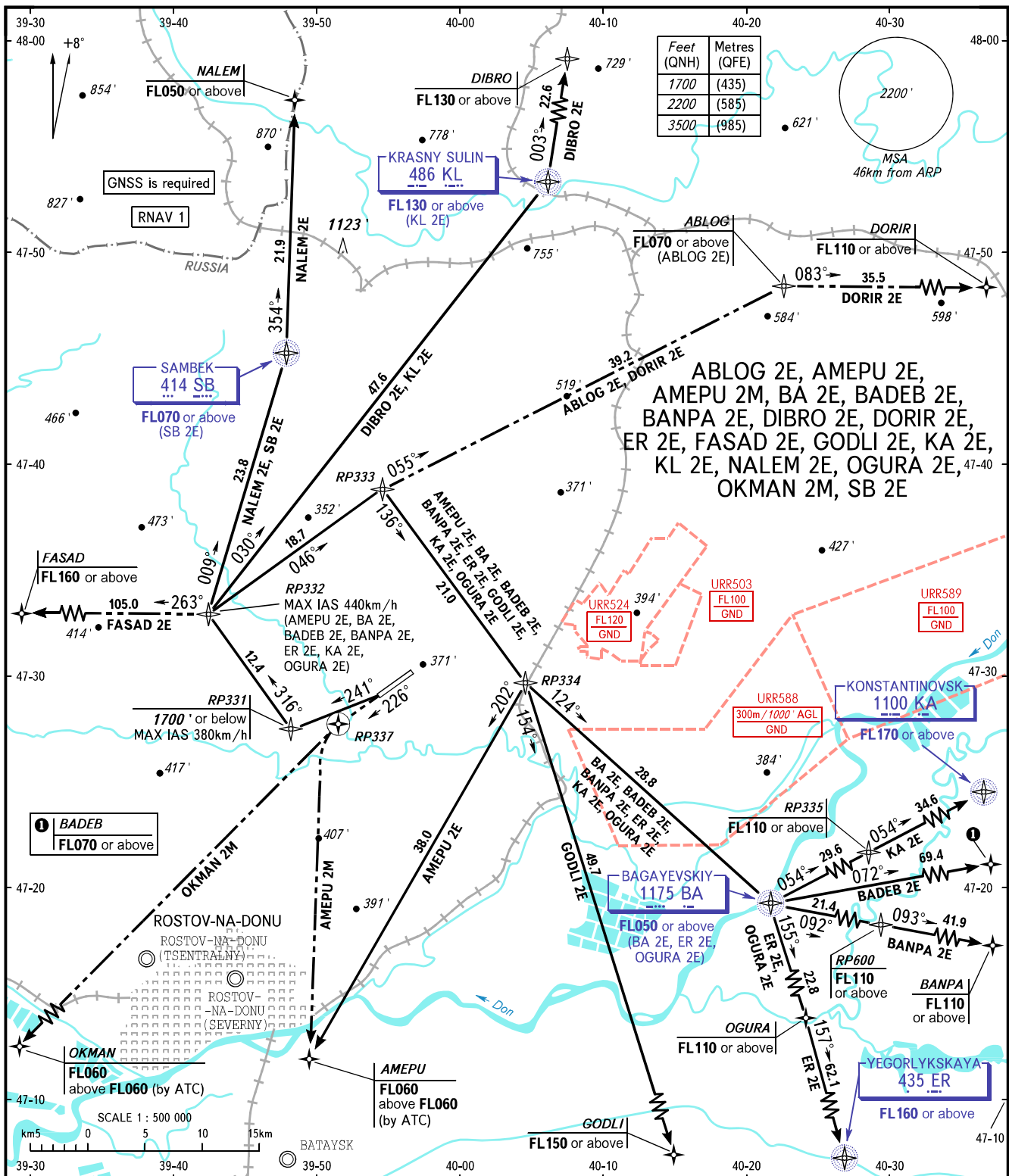


STANDARD DEPARTURE CHART
INSTRUMENT (SID) - ICAO

TRANSITION
ALTITUDE : 3500'

ROSTOV-NA-DONU, RUSSIA
PLATOV
RNAV RWY 23



PLATOV TOWER 119.700
PLATOV RADAR 121.200

The minimum climb gradients are as follows (required due to the airspace limitation):
- 5.2% up to FL060 for AMEPU 2M,
- 4.1% up to FL110 for BANPA 2E,
- 4.5% up to FL130 for DIBRO 2E,
- 3.9% up to FL160 for FASAD 2E,
- 4.4% up to FL150 for GODLI 2E,
- 3.7% up to FL110 for KA 2E,
- 6.0% up to FL130 for KL 2E,
- 6.1% up to FL070 for SB 2E.

WARNING:
1. Climb gradient 6.0% up to 700' for ABLOG 2E, AMEPU 2E, BA 2E, BADEB 2E, BANPA 2E, DIBRO 2E, DORIR 2E, ER 2E, FASAD 2E, GODLI 2E, KA 2E, KL 2E, NALEM 2E, OGURA 2E, SB 2E.
2. Climb gradient 7.0% up to 700' for AMEPU 2M, OKMAN 2M.
3. ABLOG 2E, DORIR 2E are AVBL on SUN and HOL, other days - by ATC.

BEARINGS AND TRACKS ARE MAGNETIC
ALTITUDES AND ELEVATIONS IN FEET
DISTANCES IN KILOMETRES