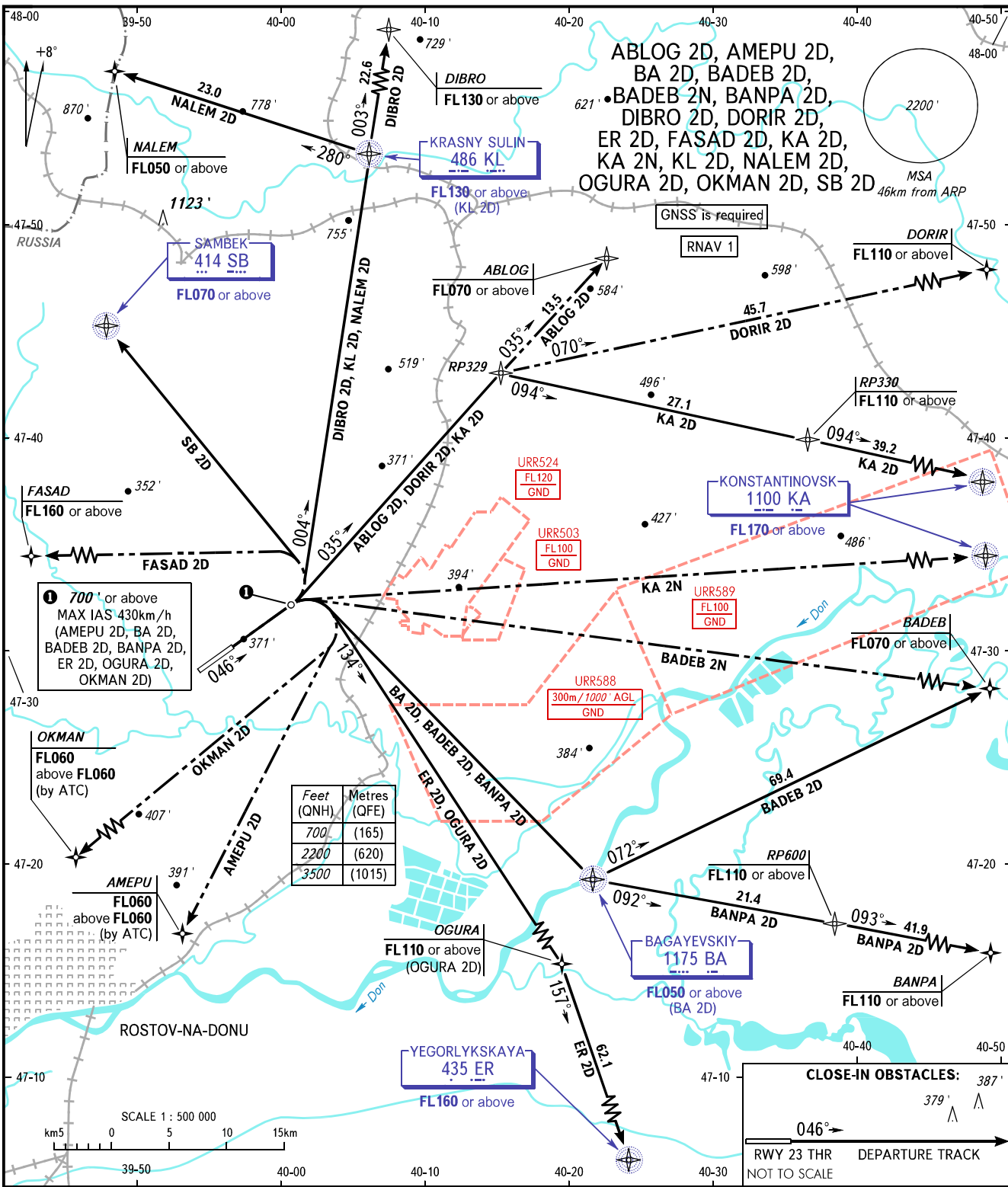


STANDARD DEPARTURE CHART
INSTRUMENT (SID) - ICAO

ROSTOV-NA-DONU, RUSSIA
PLATOV
RNAV RWY 05

TRANSITION
ALTITUDE : 3500'



PLATOV TOWER 119.700
PLATOV RADAR 121.200

The minimum climb gradients are as follows (required due to the airspace limitation):

- 4.4% up to FL070 for ABLOG 2D,
- 3.8% up to FL060 for AMEPU 2D,
- 3.6% up to FL050 for BA 2D,
- 5.4% up to FL110 for BANPA 2D,
- 5.8% up to FL130 for DIBRO 2D,
- 4.2% up to FL110 for DORIR 2D,
- 3.9% up to FL160 for ER 2D,
- 3.6% up to FL160 for FASAD 2D,
- 5.2% up to FL170 for KA 2D,
- 5.8% up to FL170 for KA 2N,
- 8.7% up to FL130 for KL 2D,
- 5.4% up to FL110 for OGURA 2D,
- 6.2% up to FL070 for SB 2D.

WARNING:

1. BADEB 2N, KA 2N are not AVBL, when URR524, URR503 are active.
2. When restricted area URR589 is active, the climb gradient for:
 - KA 2D is 5.6% up to FL110, then 4.6% up to FL170;
 - BADEB 2N, KA 2N is 10.5% up to FL110.
3. ABLOG 2D, DORIR 2D are AVBL on SUN and HOL, other days - by ATC.

BEARINGS AND TRACKS ARE MAGNETIC
ALTITUDES AND ELEVATIONS IN FEET
DISTANCES IN KILOMETRES

CHANGE: New chart