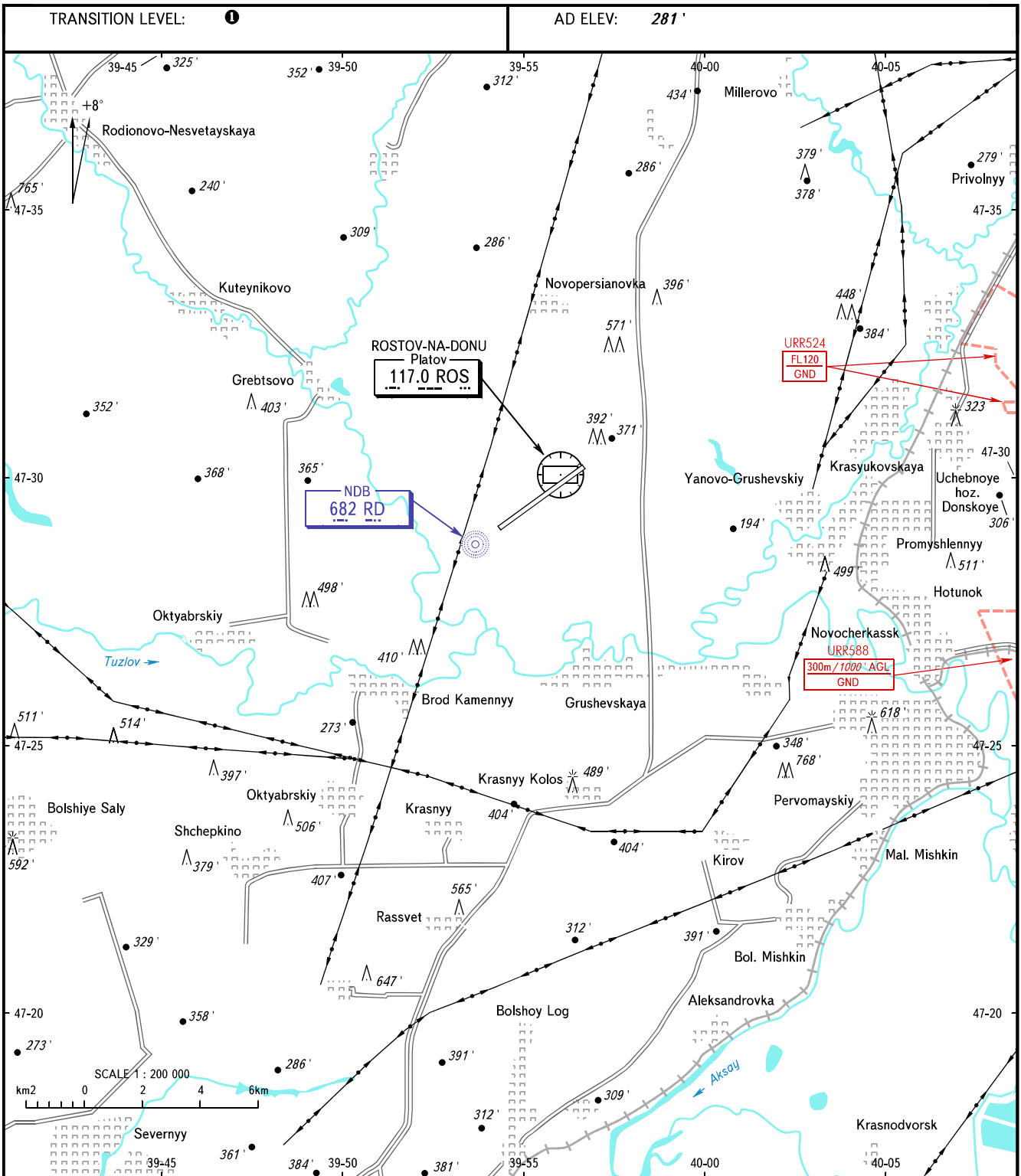


**VISUAL
APPROACH
CHART - ICAO**

PLATOV RADAR	121.200
PLATOV TOWER	119.700

ROSTOV-NA-DONU, RUSSIA
PLATOV
RWY 05/23



① TRANSITION LEVEL:
 - FL050 when QNH is 996 hPa (747mm mercury column) or above;
 - FL060 when QNH is 960 hPa (720mm mercury column) or above, but less than 996 hPa (747mm mercury column).

BEARINGS AND TRACKS ARE MAGNETIC
ALTITUDES AND ELEVATIONS IN FEET
DISTANCES IN KILOMETRES