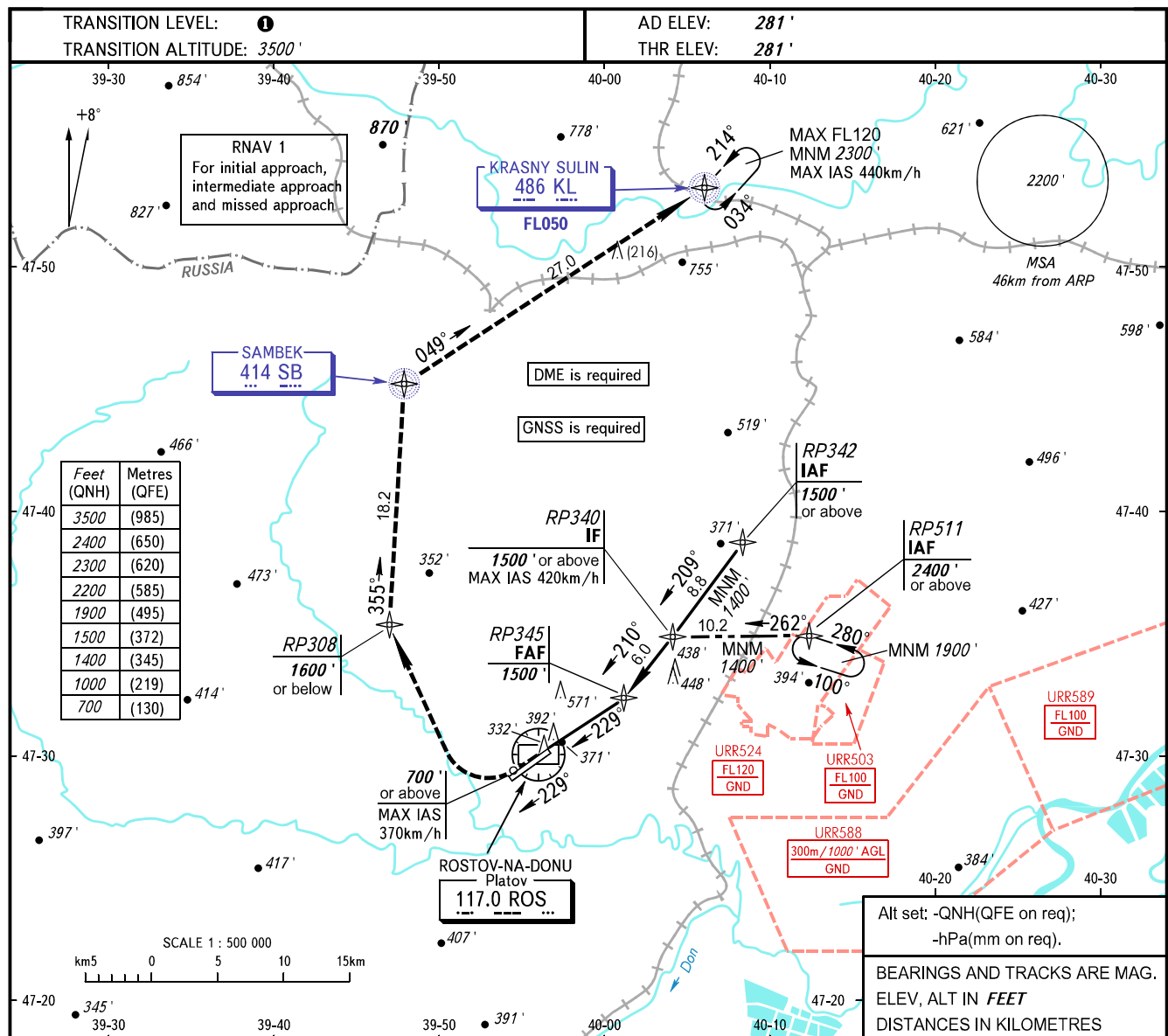


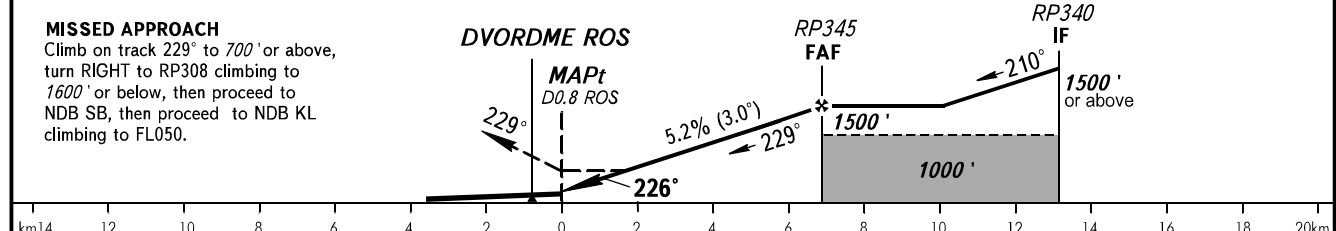
**INSTRUMENT  
APPROACH  
CHART - ICAO**

PLATOV RADAR 121.200  
PLATOV TOWER 119.700

**ROSTOV-NA-DONU, RUSSIA  
PLATOV  
DVOR Z RWY 23**



DME ROS	2.0	4.0	6.0	7.7
ALTITUDE	530'	870'	1210'	1500'



OCA(H)	A	B	C	D						
Straight-in	640' (360')	640' (360')	640' (360')	640' (360')						
Approach										
Circling	690' (410')	870' (590')	970' (690')	980' (690')						
GROUND SPEED	km/h	150	180	210	240	270	300	330	360	390
RATE OF DESCENT	m/s	2.2	2.6	3.0	3.5	3.9	4.3	4.8	5.2	5.6
	ft/min	427	512	597	682	768	853	938	1024	1109

① **TRANSITION LEVEL:**  
- FL050 when QNH is 996 hPa (747mm mercury column) or above;  
- FL060 when QNH is 960 hPa (720mm mercury column) or above, but less than 996 hPa(747mm mercury column).

**WARNING:**  
1. Intermediate approach segment is offset by 19° from final approach segment.  
2. Final approach segment is offset by 3° from RCL.

**NOTE:**  
1. Hold over IAF RP511 is AVBL by ATC.  
2. MAPt at D0.8 ROS. Timing not authorized for defining MAPt.