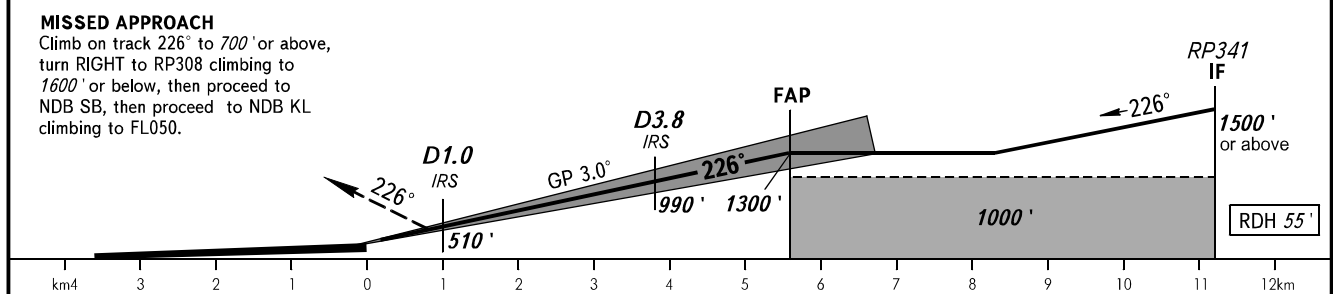
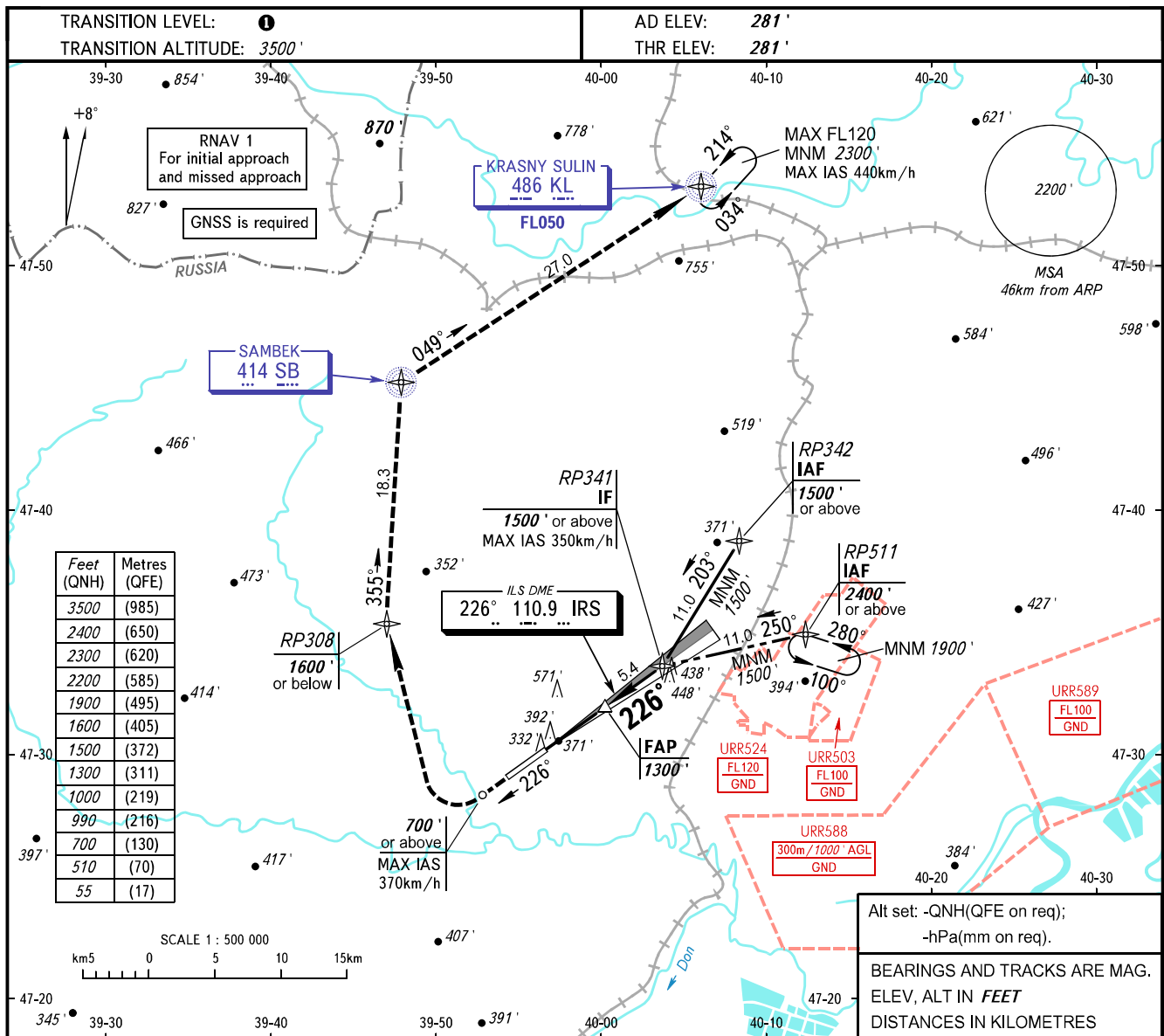


**INSTRUMENT  
APPROACH  
CHART - ICAO**

PLATOV RADAR 121.200  
PLATOV TOWER 119.700

**ROSTOV-NA-DONU, RUSSIA  
PLATOV  
ILS Z RWY 23 CAT I/II**



OCA(H)		A	B	C	D	D-widebody
Straight-in Approach	<b>CAT I</b>	426' (144')	436' (154')	448' (166')	461' (179')	464' (182')
	<b>CAT II</b>	(51')	(61')	(75')	(92')	(97')
Circling		690' (410')	870' (590')	970' (690')	980' (690')	980' (690')
GROUND SPEED	km/h	150	180	210	240	270
RATE OF DESCENT	m/s	2.2	2.6	3.0	3.5	3.9
	ft/min	427	512	597	682	768

**TRANSITION LEVEL:**  
- FL050 when QNH is 996 hPa (747mm mercury column) or above;  
- FL060 when QNH is 960 hPa (720mm mercury column) or above, but less than 996 hPa (747mm mercury column).

**NOTE:**  
1. ILS DME IRS reads zero at RWY 23 THR.  
2. Hold over IAF RP511 is AVBL by ATC.