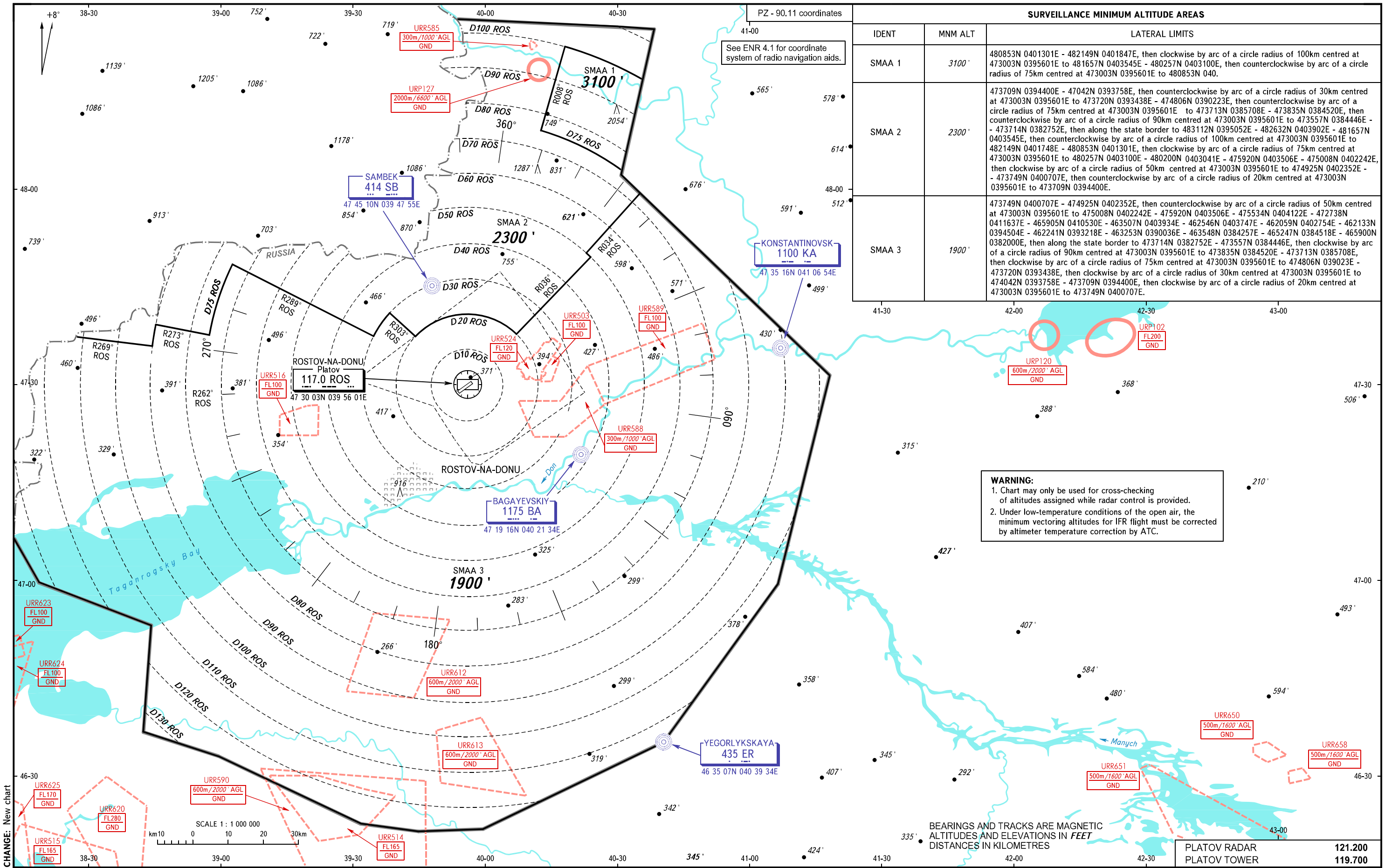


ATC SURVEILLANCE MINIMUM
ALTITUDE CHART - ICAO

ELEV
281'
TRANSITION ALTITUDE : **3500'**

ROSTOV-NA-DONU, RUSSIA

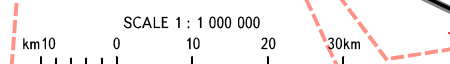
PLATOV



SURVEILLANCE MINIMUM ALTITUDE AREAS		
IDENT	MNM ALT	LATERAL LIMITS
SMAA 1	3100'	480853N 0401301E - 482149N 0401847E, then clockwise by arc of a circle radius of 100km centred at 473003N 0395601E to 481657N 0403545E - 480257N 0403100E, then counterclockwise by arc of a circle radius of 75km centred at 473003N 0395601E to 480853N 040.
SMAA 2	2300'	473709N 0394400E - 47042N 0393758E, then counterclockwise by arc of a circle radius of 30km centred at 473003N 0395601E to 473720N 0393438E - 474806N 0390223E, then counterclockwise by arc of a circle radius of 75km centred at 473003N 0395601E to 473713N 0385708E - 473835N 0384520E, then counterclockwise by arc of a circle radius of 90km centred at 473003N 0395601E to 473557N 0384446E - 473714N 0382752E, then along the state border to 483112N 0395052E - 482632N 0403902E - 481657N 0403545E, then counterclockwise by arc of a circle radius of 100km centred at 473003N 0395601E to 482149N 0401748E - 480853N 0401301E, then clockwise by arc of a circle radius of 75km centred at 473003N 0395601E to 480257N 0403100E - 480200N 0403041E - 475920N 0403506E - 475008N 0402242E, then clockwise by arc of a circle radius of 50km centred at 473003N 0395601E to 474925N 0402352E - 473749N 0400707E, then counterclockwise by arc of a circle radius of 20km centred at 473003N 0395601E to 473709N 0394400E.
SMAA 3	1900'	473749N 0400707E - 474925N 0402352E, then counterclockwise by arc of a circle radius of 50km centred at 473003N 0395601E to 475008N 0402242E - 475920N 0403506E - 475534N 0404122E - 472738N 0411637E - 465905N 0410530E - 463507N 0403934E - 462546N 0403747E - 462059N 0402754E - 462133N 0394504E - 462241N 0393218E - 463253N 0390036E - 463548N 0384257E - 465247N 0384518E - 465900N 0382000E, then along the state border to 473714N 0382752E - 473557N 0384446E, then clockwise by arc of a circle radius of 90km centred at 473003N 0395601E to 473835N 0384520E - 473713N 0385708E, then clockwise by arc of a circle radius of 75km centred at 473003N 0395601E to 474806N 039023E - 473720N 0393438E, then clockwise by arc of a circle radius of 30km centred at 473003N 0395601E to 474042N 0393758E - 473709N 0394400E, then clockwise by arc of a circle radius of 20km centred at 473003N 0395601E to 473749N 0400707E.

WARNING:

- Chart may only be used for cross-checking of altitudes assigned while radar control is provided.
- Under low-temperature conditions of the open air, the minimum vectoring altitudes for IFR flight must be corrected by altimeter temperature correction by ATC.



BEARINGS AND TRACKS ARE MAGNETIC
ALTITUDES AND ELEVATIONS IN FEET
DISTANCES IN KILOMETRES

PLATOV RADAR **121.200**
PLATOV TOWER **119.700**