

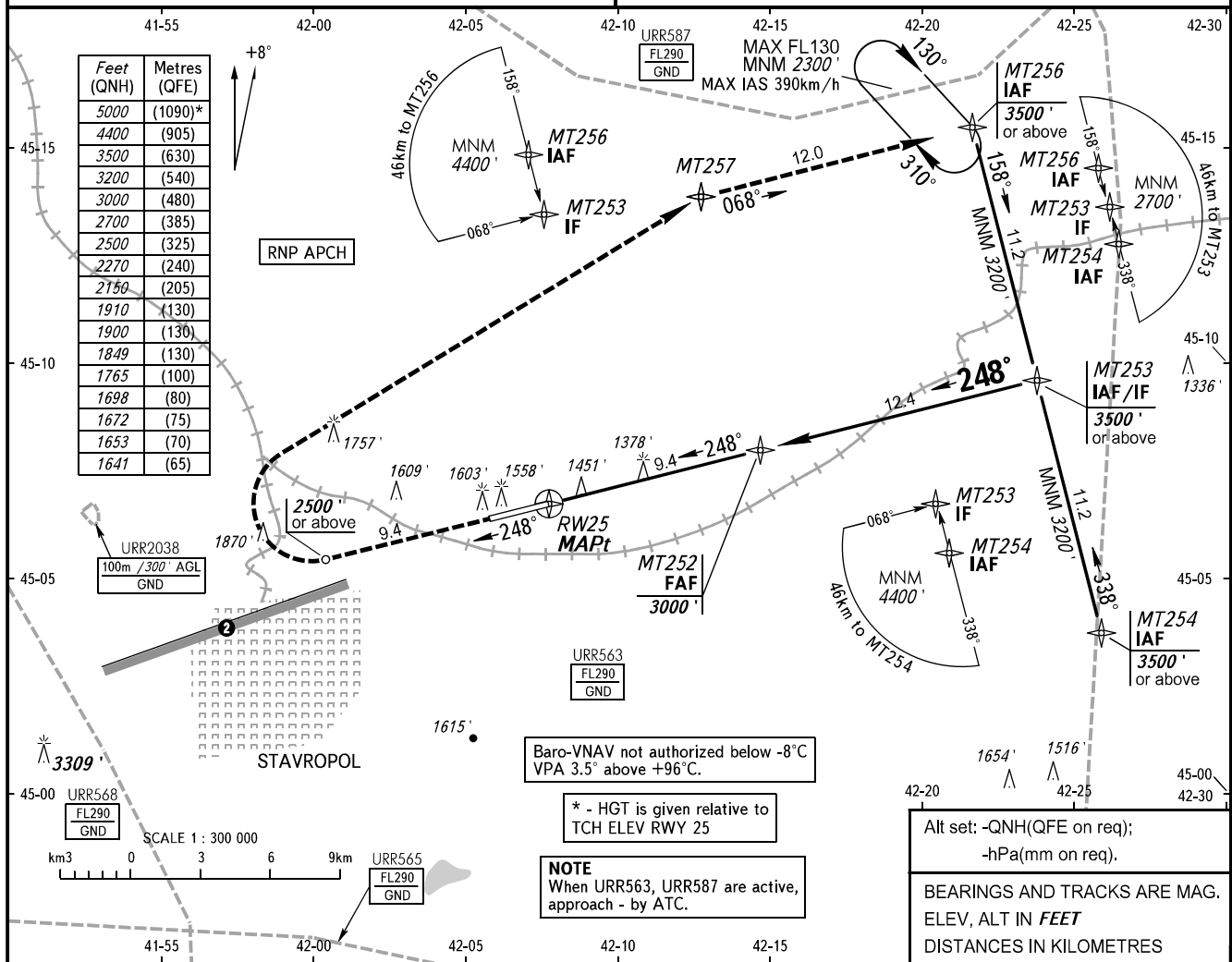
**INSTRUMENT
APPROACH
CHART - ICAO**

STAVROPOL, RUSSIA
SHPAKOVSKOYE
RNAV RWY 25

TOWER **120.900**

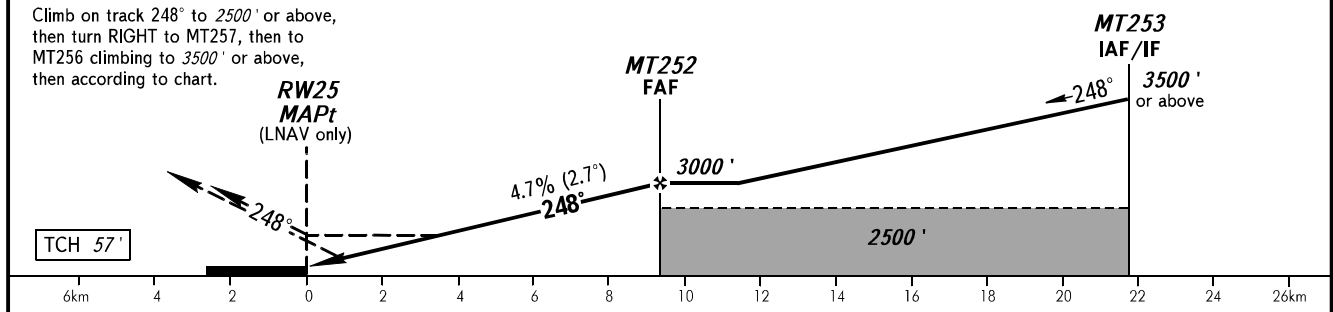
TRANSITION LEVEL: **01**
TRANSITION ALTITUDE: **5000'**

AD ELEV: **1486'**
THR ELEV: **1434'**



MISSED APPROACH

Climb on track 248° to 2500' or above, then turn RIGHT to MT257, then to MT256 climbing to 3500' or above, then according to chart.



OCA(H)		A	B	C	D
Straight-in	LNAV	1765' (331')	1765' (331')	1849' (363')	1765' (331')
	LNAV/VNAV	1641' (207')	1653' (219')	1672' (238')	1698' (264')
Approach					
Circling		1900' (413')	1910' (418')	2150' (664')	2270' (778')

- 1** TRANSITION LEVEL:
- FL060 when QNH is 1013 hPa (760mm mercury column) or above;
- FL070 when QNH is 977 hPa (733mm mercury column) or above, but less than 1013 hPa (760mm mercury column);
- FL080 when QNH is less than 977 hPa (733mm mercury column).
- 2** Limiting bearing line 243° from ARP DIST 9-21km GND-FL060.

GROUND SPEED	km/h	150	180	210	240	270	300	330	360	390
RATE OF DESCENT	m/s	2.0	2.4	2.7	3.1	3.5	3.9	4.3	4.7	5.1
	ft/min	385	463	540	617	694	771	848	925	1002