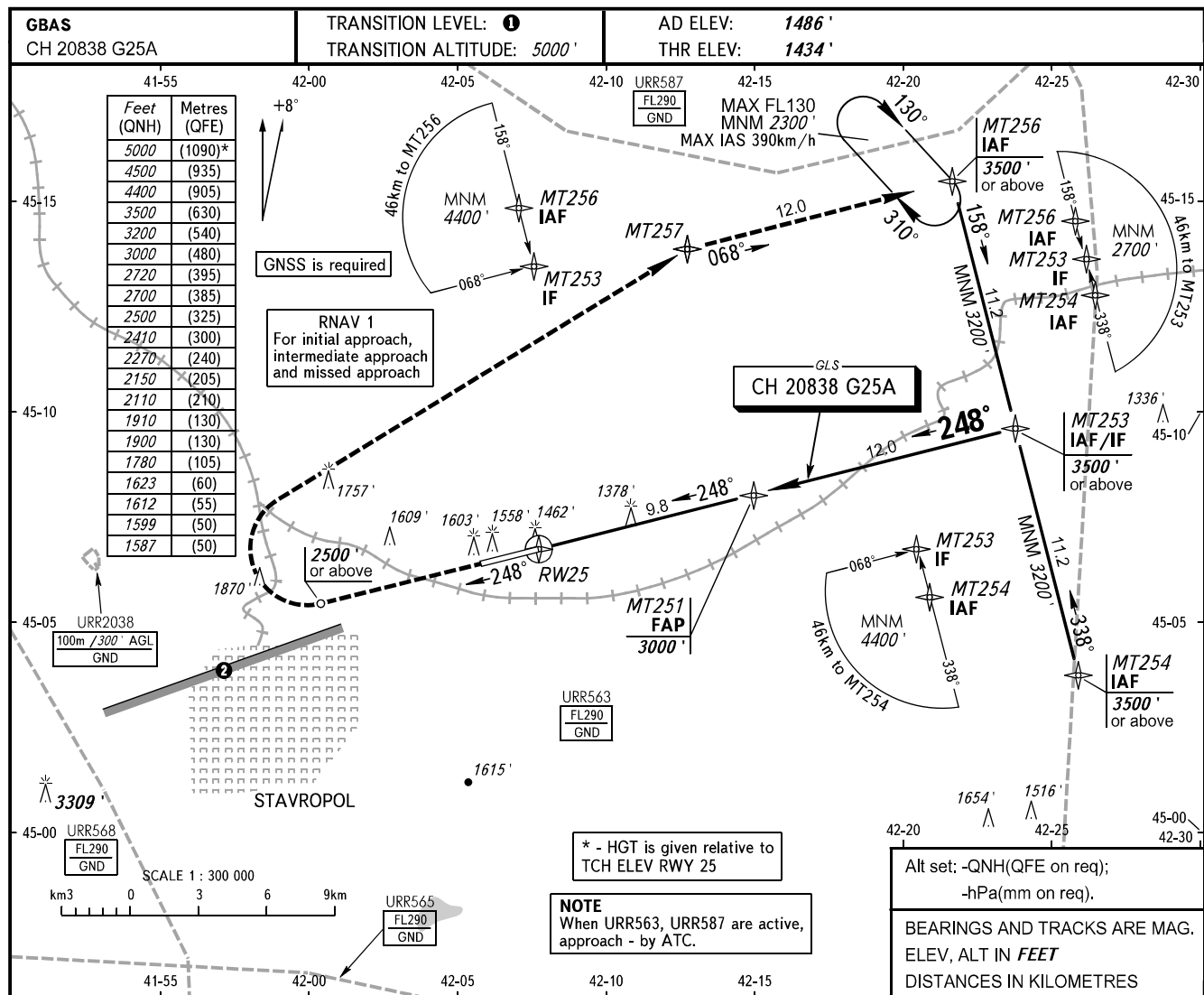


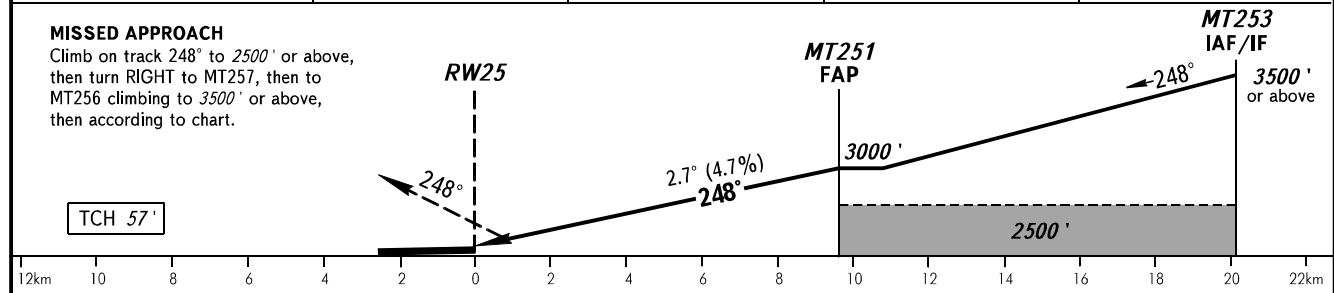
**INSTRUMENT
APPROACH
CHART - ICAO**

TOWER **120.900**

STAVROPOL, RUSSIA
SHPAKOVSKOYE
GLS RWY 25



DIST to RW25	2.0	4.0	6.0	8.0
ALTITUDE	1780'	2110'	2410'	2720'



OCA(H)		A	B	C	D
Straight-in	CAT I	1587' (153')	1599' (166')	1612' (179')	1623' (189')
	Approach				
Circling		1900' (413')	1910' (418')	2150' (664')	2270' (778')

GROUND SPEED	km/h	150	180	210	240	270	300	330	360	390
RATE OF DESCENT	m/s	2.0	2.4	2.7	3.1	3.5	3.9	4.3	4.7	5.1
	ft/min	385	463	540	617	694	771	848	925	1002