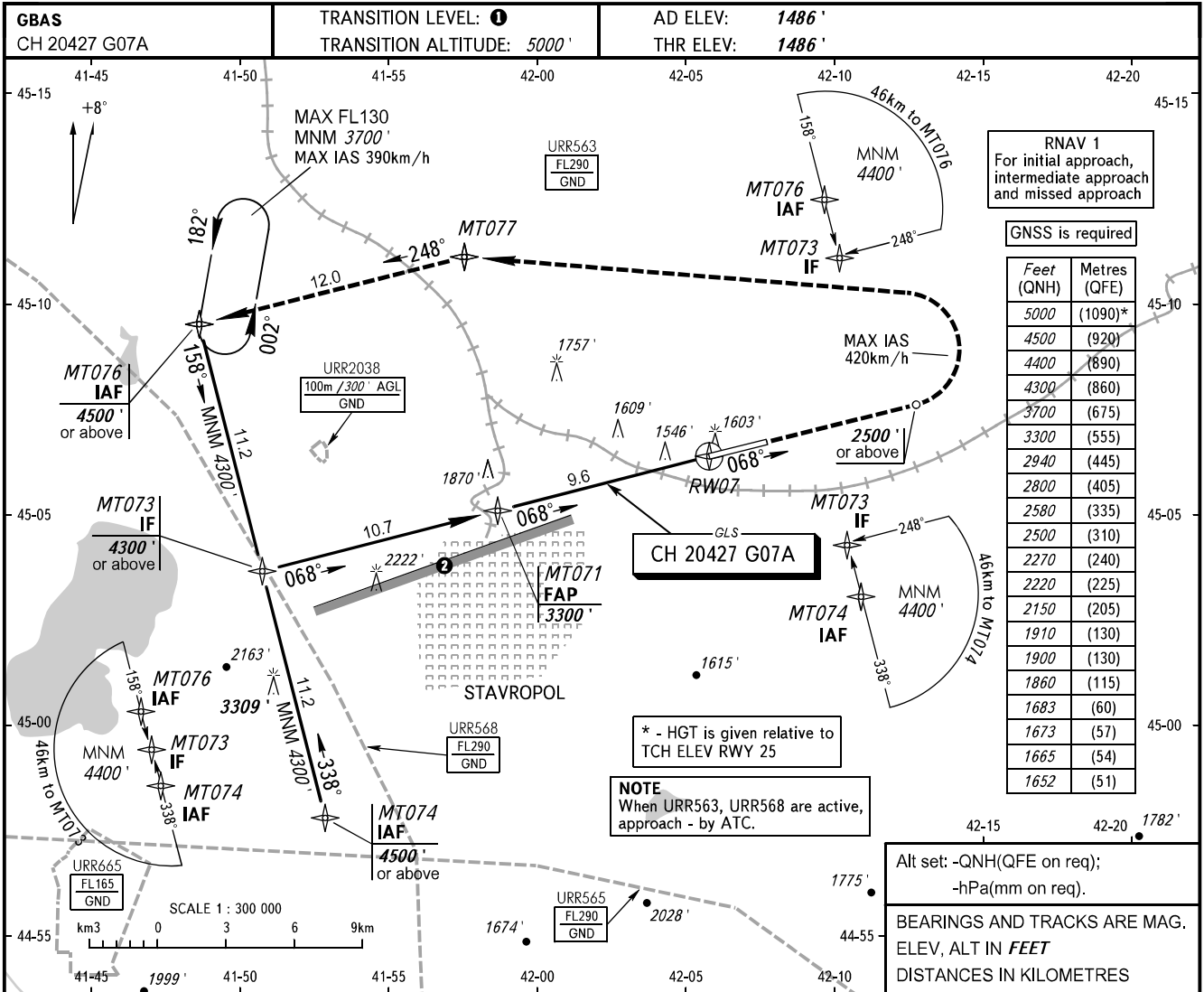


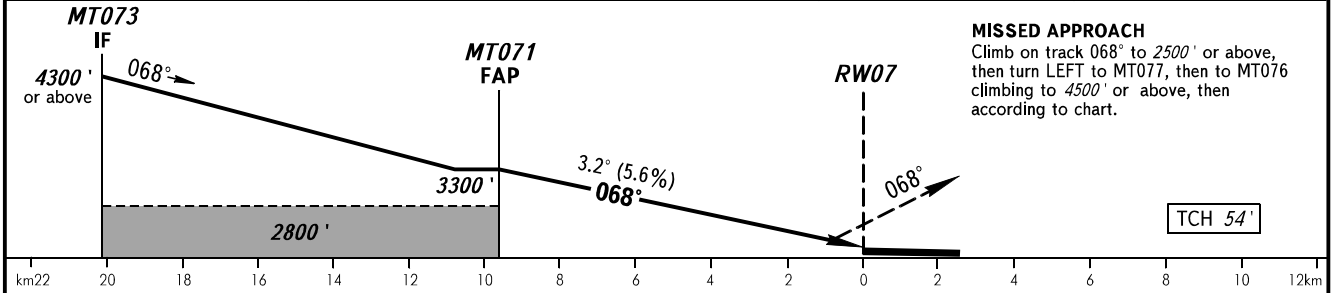
**INSTRUMENT
APPROACH
CHART - ICAO**

**STAVROPOL, RUSSIA
SHPAKOVSKOYE
GLS RWY 07**

TOWER **120.900**



DIST to RW07	8.0	6.0	4.0	2.0
ALTITUDE	2940'	2580'	2220'	1860'



OCA(H)		A	B	C	D						
Straight-in	CAT I	1652' (167')	1665' (179')	1673' (187')	1683' (198')						
	Approach										
Circling		1900' (413')	1910' (418')	2150' (664')	2270' (778')						
GROUND SPEED		km/h	150	180	210	240	270	300	330	360	390
RATE OF DESCENT		m/s	2.0	2.4	2.7	3.1	3.5	3.9	4.3	4.7	5.1
		ft/min	385	463	540	617	694	771	848	925	1002

1 TRANSITION LEVEL:
- FL060 when QNH is 1013 hPa (760mm mercury column) or above;
- FL070 when QNH is 977 hPa (733mm mercury column) or above, but less than 1013 hPa (760mm mercury column);
- FL080 when QNH is less than 977 hPa (733mm mercury column).

2 Limiting bearing line 243° from ARP DIST 9-21km GND-FL060.

CHANGE: New chart