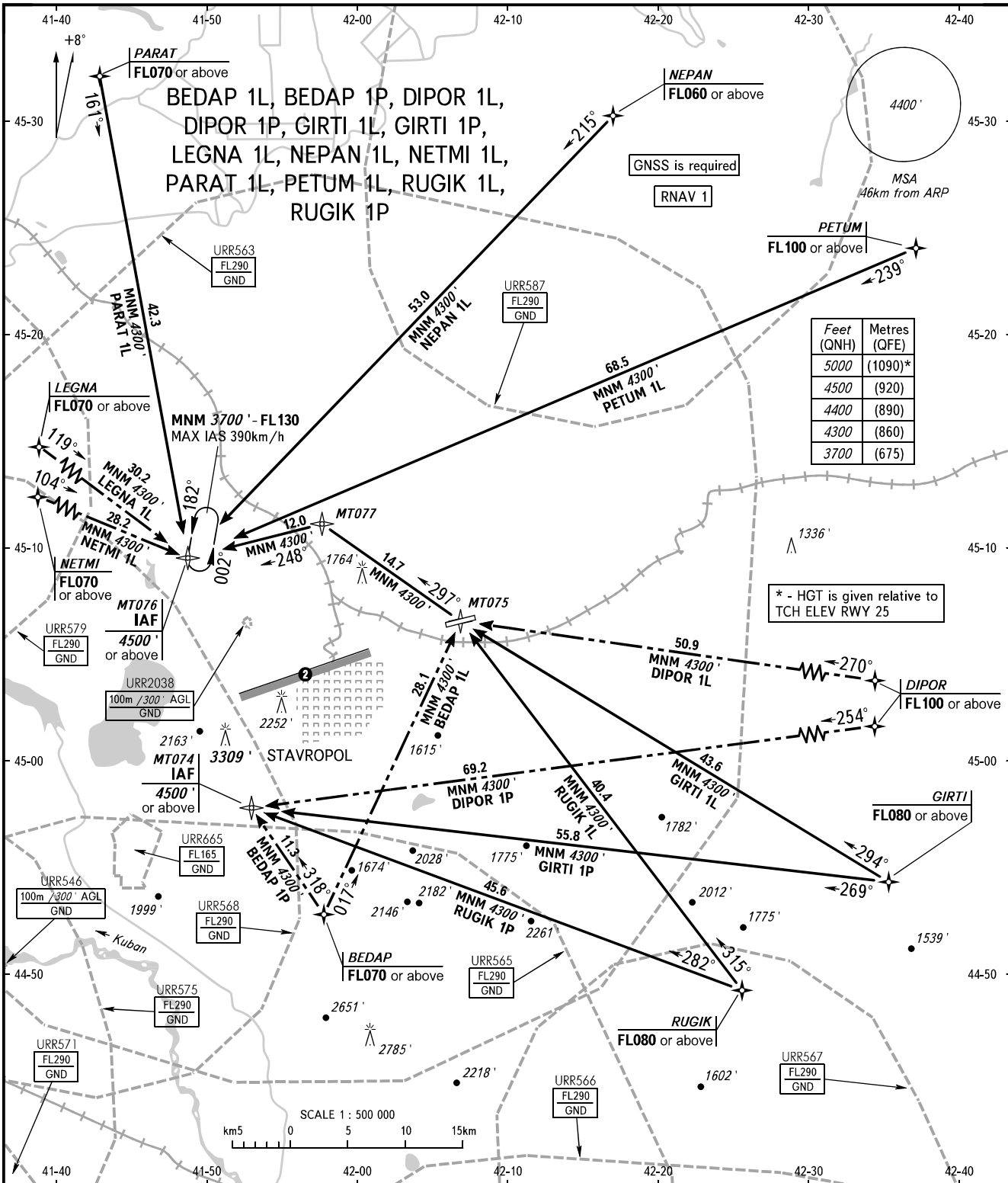


STANDARD ARRIVAL CHART
INSTRUMENT (STAR) - ICAO

STAVROPOL, RUSSIA
SHPAKOVSKOYE
RNAV RWY 07

TRANSITION
LEVEL: ①



Feet (QNH)	Metres (QFE)
5000	(1090)*
4500	(920)
4400	(890)
4300	(860)
3700	(675)

* - HGT is given relative to TCH ELEV RWY 25

TOWER APPROACH 120.900
121.050

- ① TRANSITION LEVEL:
- FL060 when QNH is 1013 hPa (760mm mercury column) or above;
 - FL070 when QNH is 977 hPa (733mm mercury column) or above, but less than 1013 hPa (760mm mercury column);
 - FL080 when QNH is less than 977 hPa (733mm mercury column).
- ② Limiting bearing line 243° from ARP
DIST 9-21km GND-FL060.

BEARINGS AND TRACKS ARE MAGNETIC
ALTITUDES AND ELEVATIONS IN FEET
DISTANCES IN KILOMETRES

CHANGE: New chart