

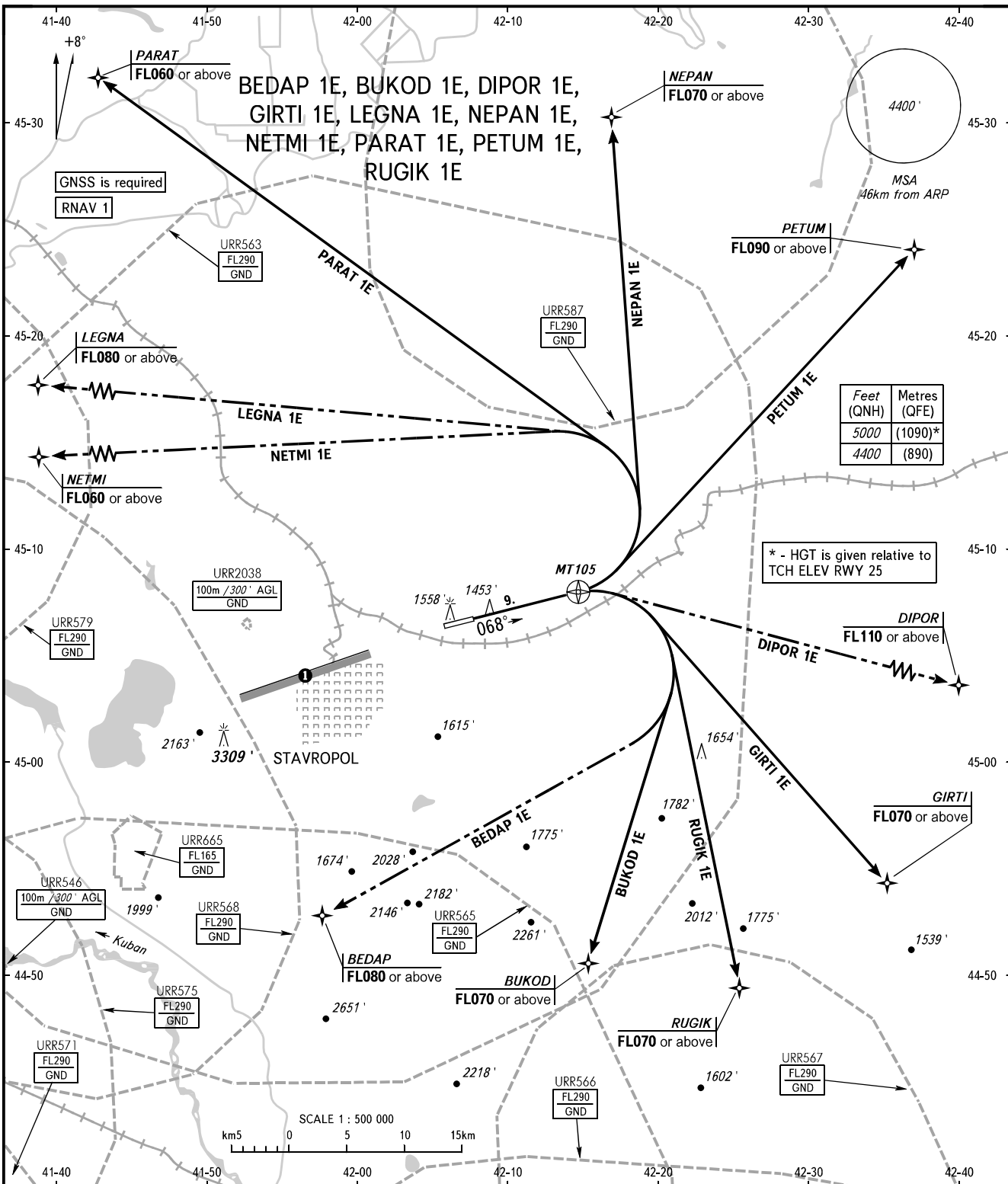
STANDARD DEPARTURE CHART  
INSTRUMENT (SID) - ICAO

TRANSITION  
ALTITUDE: 5000'

STAVROPOL, RUSSIA

SHPAKOVSKOYE

RNAV RWY 07



TOWER 120.900  
APPROACH 121.050

**WARNING**  
The minimum climb gradients are as follows (required due to the airspace structure):  
- 4.1% up to FL090 for SID PETUM 1E;  
- 5.2% up to FL110 for SID DIPOR 1E.

① Limiting bearing line 243° from ARP DIST 9-21km GND-FL060.

BEARINGS AND TRACKS ARE MAGNETIC  
ALTITUDES AND ELEVATIONS IN FEET  
DISTANCES IN KILOMETRES

CHANGE: New chart