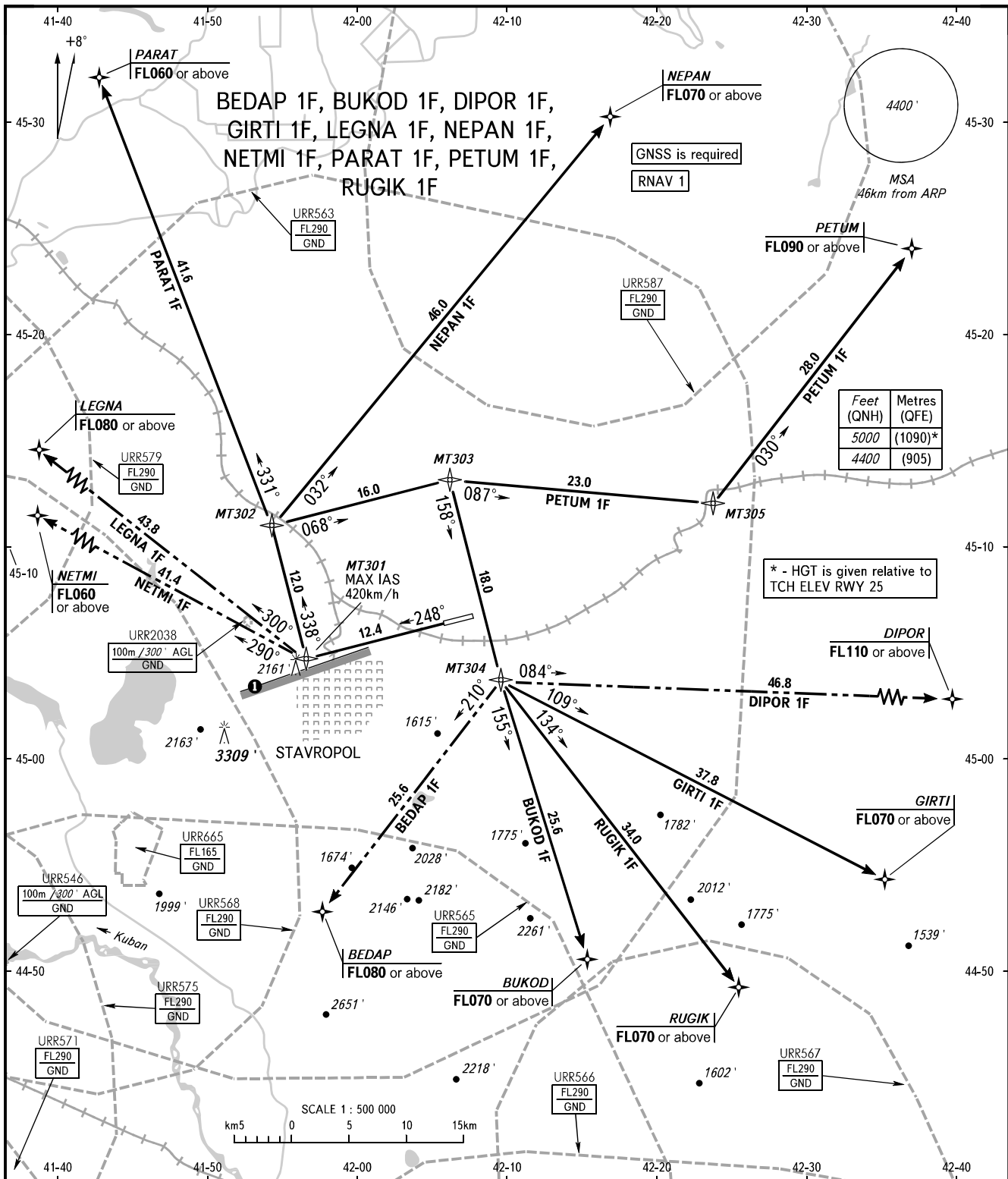


STANDARD DEPARTURE CHART  
INSTRUMENT (SID) - ICAO

TRANSITION  
ALTITUDE: 5000'

STAVROPOL, RUSSIA  
SHPAKOVSKOYE  
RNAV RWY 25



TOWER 120.900  
APPROACH 121.050

① Limiting bearing line 243° from ARP  
DIST 9-21km GND-FL060.

BEARINGS AND TRACKS ARE MAGNETIC  
ALTITUDES AND ELEVATIONS IN FEET  
DISTANCES IN KILOMETRES