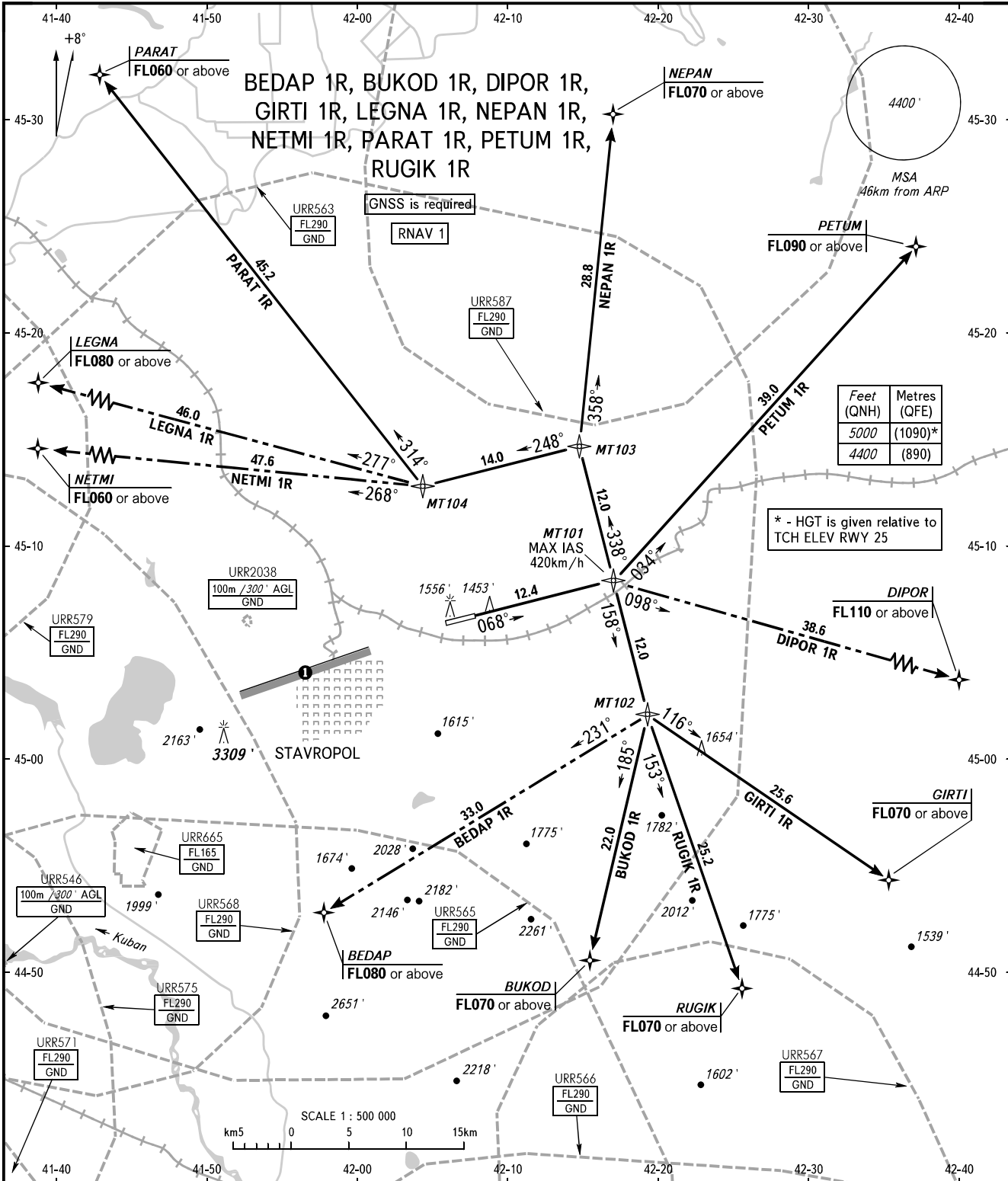


STANDARD DEPARTURE CHART
INSTRUMENT (SID) - ICAO

TRANSITION
ALTITUDE: 5000'

STAVROPOL, RUSSIA
SHPAKOVSKOYE
RNAV RWY 07



TOWER 120.900
APPROACH 121.050

WARNING
The minimum climb gradients are as follows (required due to the airspace structure):
- 3.4% up to FL070 for SID GIRTI 1R;
- 3.5% up to FL070 for SID RUGIK 1R;
- 3.7% up to FL070 for SID BUKOD 1R;
- 4.6% up to FL090 for SID PETUM 1R;
- 5.8% up to FL110 for SID DIPOR 1R.

BEARINGS AND TRACKS ARE MAGNETIC
ALTITUDES AND ELEVATIONS IN FEET
DISTANCES IN KILOMETRES

① Limiting bearing line 243° from ARP
DIST 9-21km GND-FL060.

CHANGE: New chart