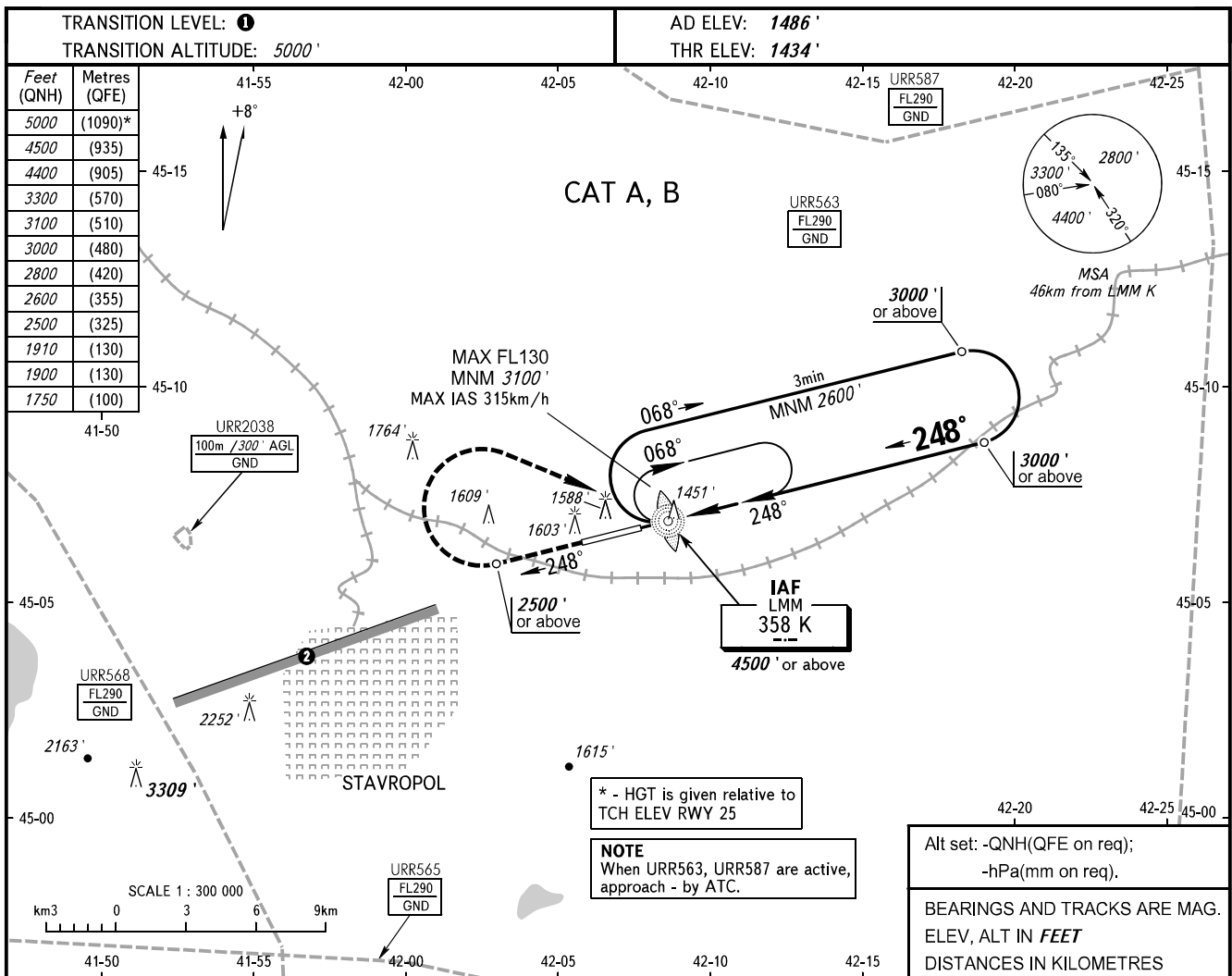


**INSTRUMENT
APPROACH
CHART - ICAO**

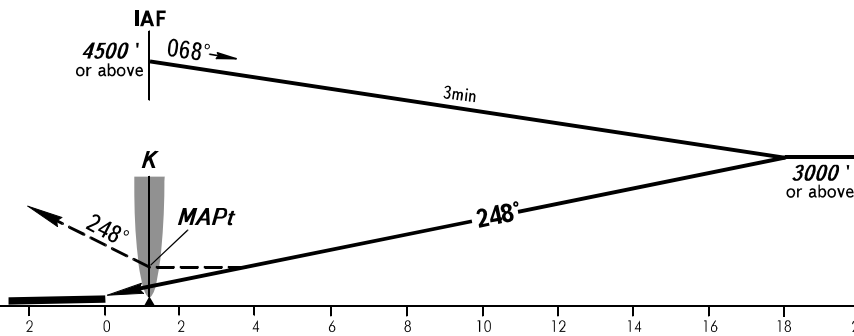
STAVROPOL, RUSSIA
SHPAKOVSKOYE
NDB U RWY 25

TOWER **120.900**



MISSED APPROACH

Climb on track 248° to 2500' or above, then turn RIGHT to LMM K at 4500' or above, then according to chart.



OCA(H)		A	B	C	D
Straight-in Approach		1750' (315')	1750' (315')		
Circling		1900' (413')	1910' (418')		

- ① TRANSITION LEVEL:
- FL060 when QNH is 1013 hPa (760mm mercury column) or above;
 - FL070 when QNH is 977 hPa (733mm mercury column) or above, but less than 1013 hPa (760mm mercury column);
 - FL080 when QNH is less than 977 hPa (733mm mercury column).
- ② Limiting bearing line 243° from ARP DIST 9-21km GND-FL060.