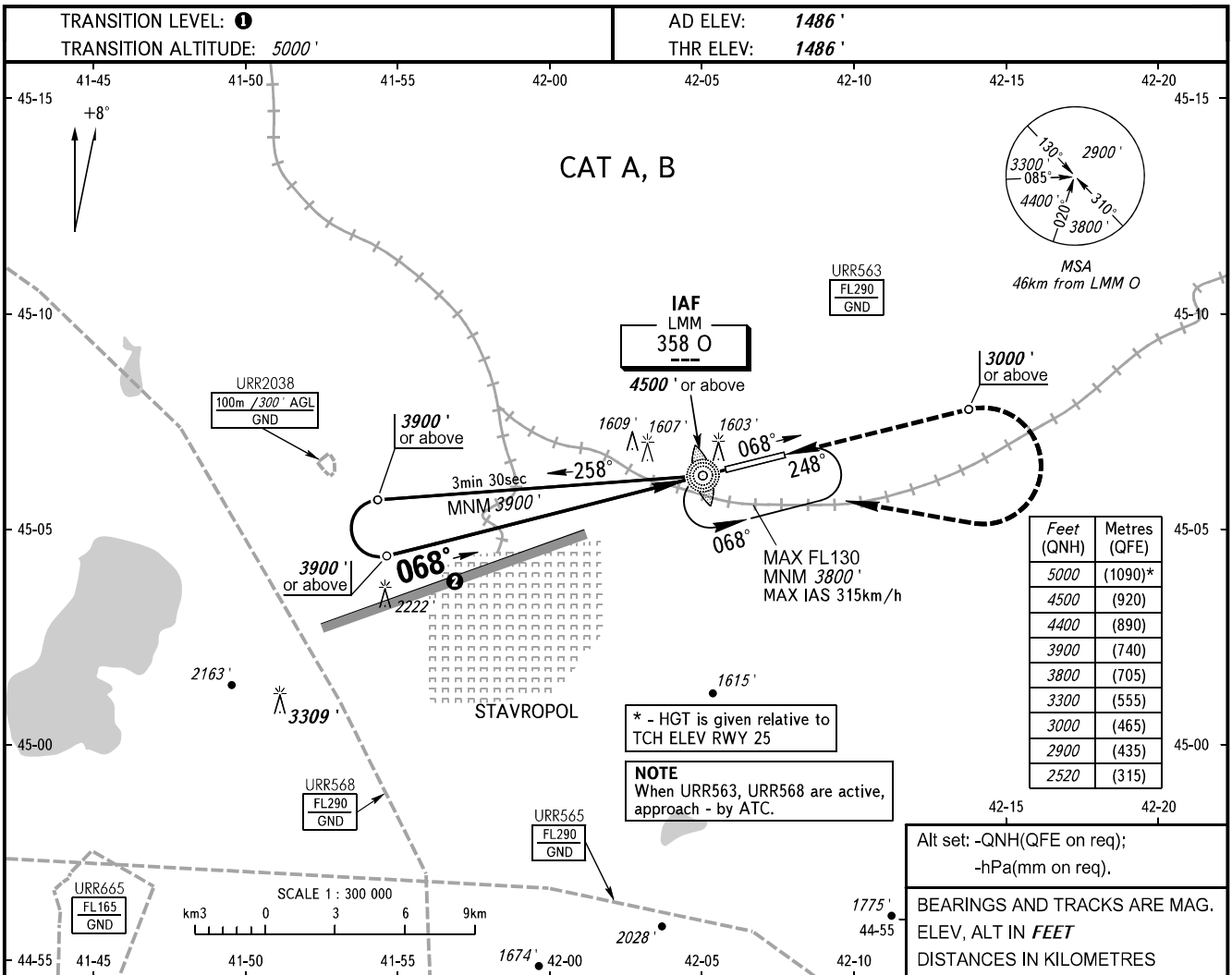


**INSTRUMENT  
APPROACH  
CHART - ICAO**

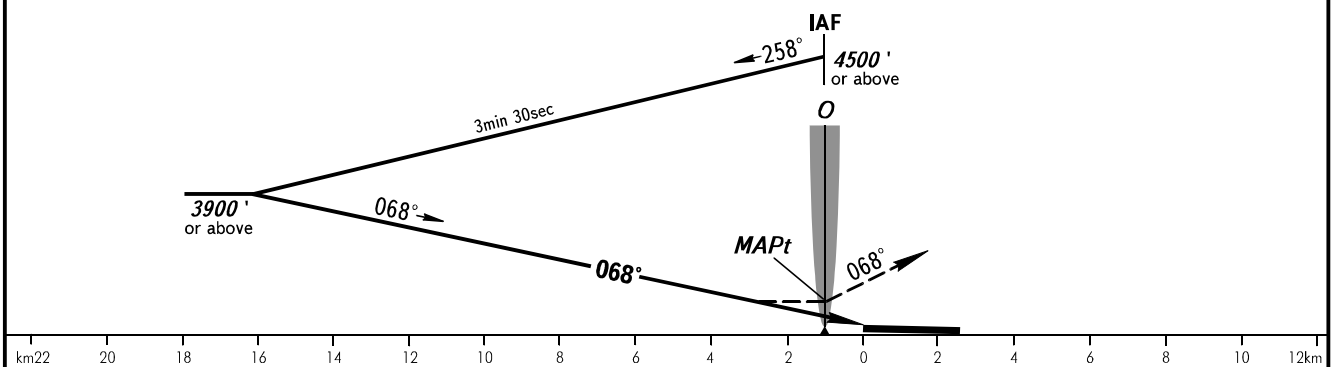
TOWER **120.900**

**STAVROPOL, RUSSIA**  
SHPAKOVSKOYE  
NDB U RWY 07



**MISSED APPROACH**

Climb on track 068° to 3000' or above, then turn **RIGHT** to LMM O at 4500' or above, then according to chart.



OCA(H)		A	B	C	D
Straight-in	Approach	2520' (1030')	2520' (1030')		
Circling		2520' (1030')	2520' (1030')		

- 1** TRANSITION LEVEL:  
- FL060 when QNH is 1013 hPa (760mm mercury column) or above;  
- FL070 when QNH is 977 hPa (733mm mercury column) or above, but less than 1013 hPa (760mm mercury column);  
- FL080 when QNH is less than 977 hPa (733mm mercury column).
- 2** Limiting bearing line 243° from ARP DIST 9-21km GND-FL060.

CHANGE: New chart