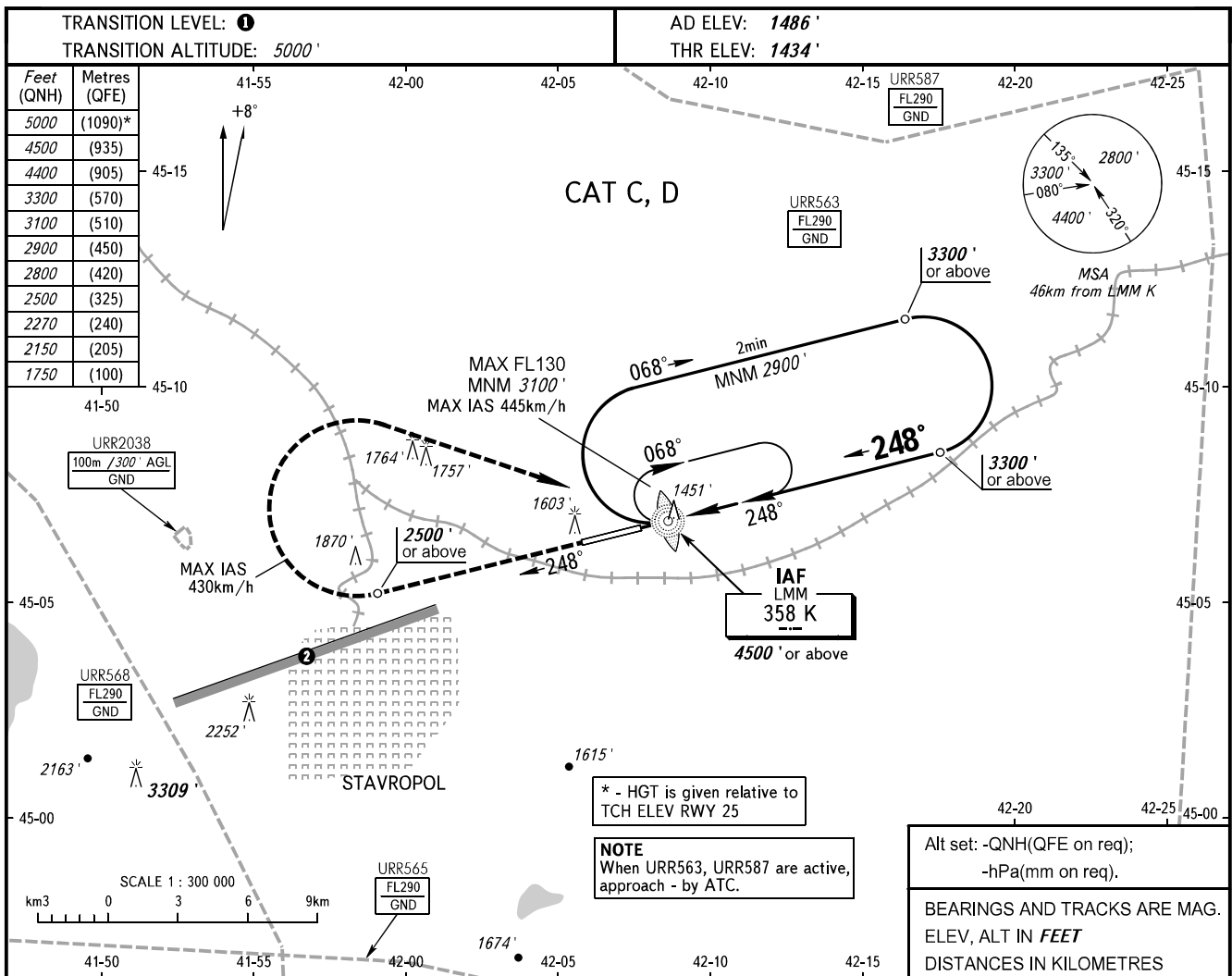


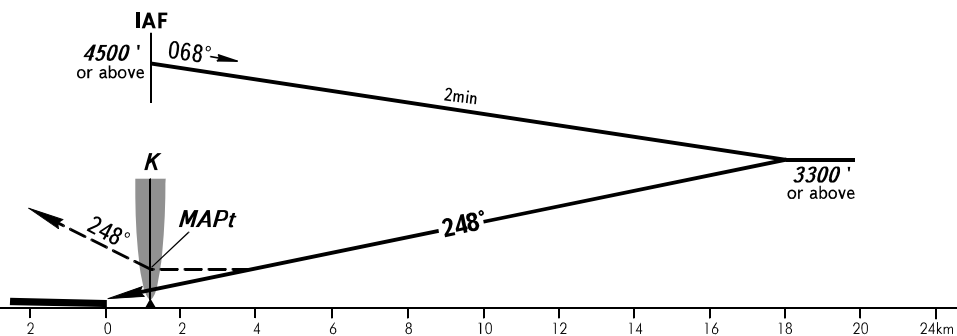
**INSTRUMENT  
APPROACH  
CHART - ICAO**

**STAVROPOL, RUSSIA  
SHPAKOVSKOYE  
NDB V RWY 25**

TOWER **120.900**



**MISSED APPROACH**  
Climb on track 248° to 2500' or above, then turn RIGHT to LMM K at 4500' or above, then according to chart.



| OCA(H)               |  | A | B | C            | D            |
|----------------------|--|---|---|--------------|--------------|
| Straight-in Approach |  |   |   | 1750' (315') | 1750' (315') |
|                      |  |   |   |              |              |
| Circling             |  |   |   | 2150' (664') | 2270' (778') |

- ① **TRANSITION LEVEL:**
  - FL060 when QNH is 1013 hPa (760mm mercury column) or above;
  - FL070 when QNH is 977 hPa (733mm mercury column) or above, but less than 1013 hPa (760mm mercury column);
  - FL080 when QNH is less than 977 hPa (733mm mercury column).
- ② Limiting bearing line 243° from ARP DIST 9-21km GND-FL060.