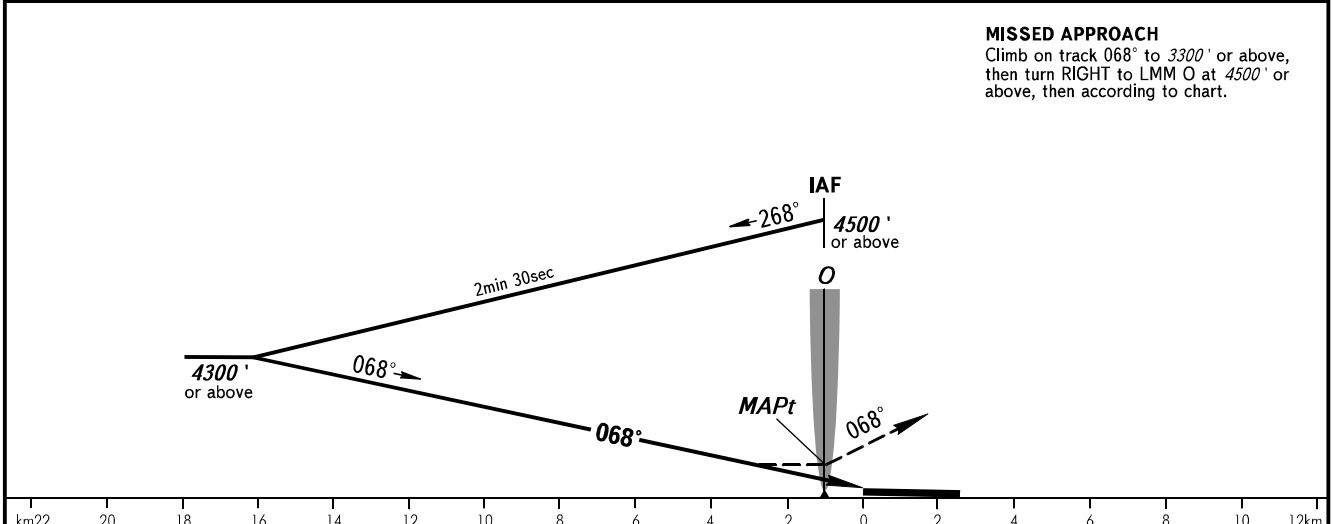
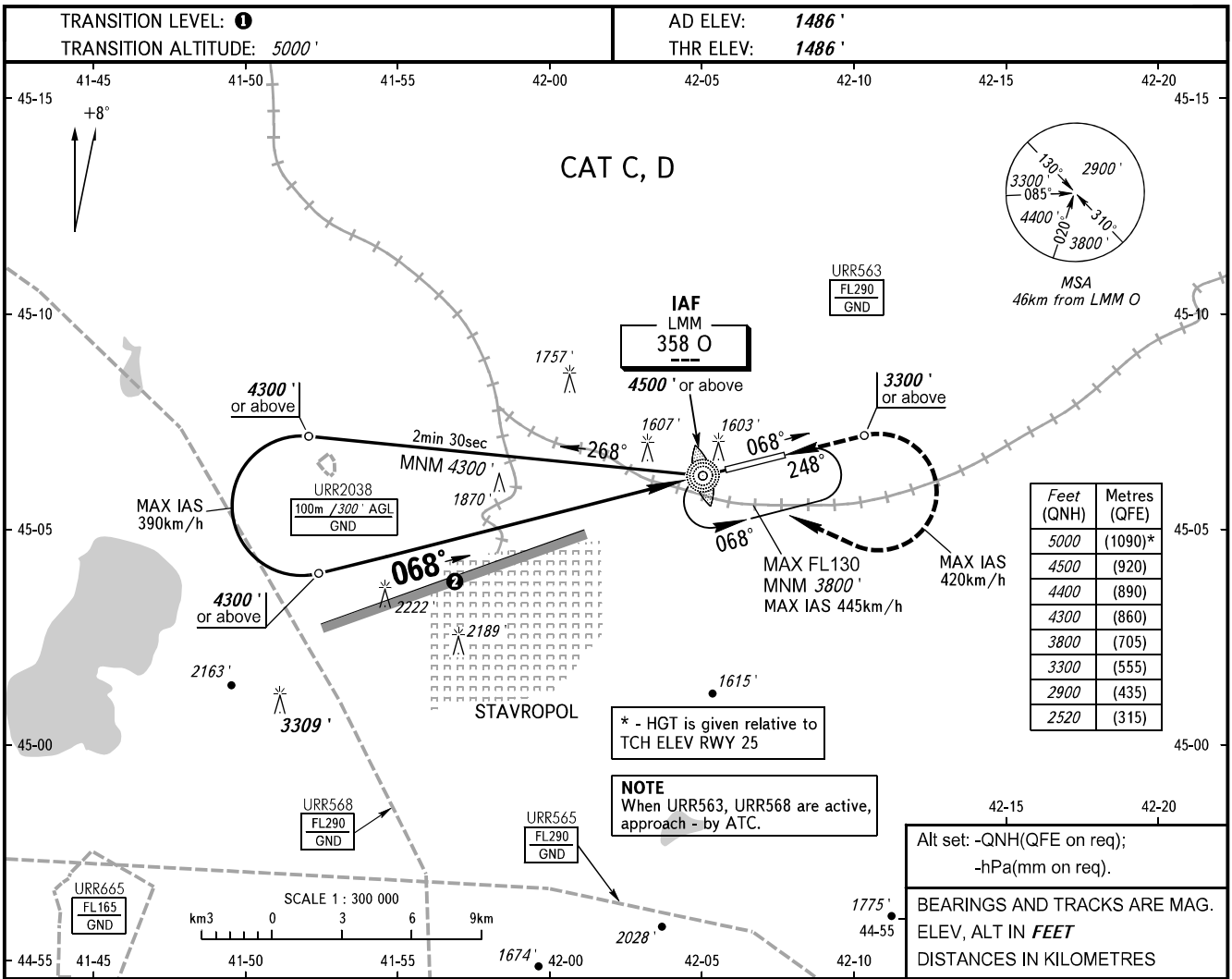


**INSTRUMENT
APPROACH
CHART - ICAO**

TOWER **120.900**

STAVROPOL, RUSSIA
SHPAKOVSKOYE
NDB V RWY 07



OCA(H)		A	B	C	D
Straight-in	Approach			2520' (1030')	2520' (1030')
	Circling			2520' (1030')	2520' (1030')

1 TRANSITION LEVEL:
- FL060 when QNH is 1013 hPa (760mm mercury column) or above;
- FL070 when QNH is 977 hPa (733mm mercury column) or above, but less than 1013 hPa (760mm mercury column);
- FL080 when QNH is less than 977 hPa (733mm mercury column).

2 Limiting bearing line 243° from ARP DIST 9-21km GND-FL060.

CHANGE: New chart